



SCLMA President's Message

Dr Roger Faint



It is finally happening!

The Queensland border restrictions sort of relaxed on Monday 13th December, followed by proof of vaccination status being required on the 17th. Already new QLD mask requirements have been initiated for those public

places where, dare I say it, unvaccinated people might frequent from today 18th December, despite QLD being almost 84% double vaccinated.

As a General Practitioner, I have seen angry, anxious and bewildered patients, some who accepted vaccination (with appropriate cuddling from the practice nurses) and some who didn't (perhaps pro choice, perhaps distrusting). Unsurprisingly at our practice, over the last week, demand has increased for double vaccination and increased dramatically for the third vaccine dose (also well known as the booster). Who knew that it is now recommended to change vaccines to further 'boost' the immune system, an idea not recommended pre COVID (PC).

*There are GP practices on the Sunshine Coast that now only offer tele-video medicine consultations to unvaccinated patients, which they are entitled to offer, however I know of one practice that has had their staff abused and website disrupted as a result. Other practices are following the Federal Health recommendations table: **'Workers in health care settings exposure risk matrix'** which suggests that a fully vaccinated health professional wearing eye protection and a P2/N95 mask can see a patient (with or without mask) and be considered LOW RISK. I recommend all read the report!*

I wrote this article pre festive season, whilst in Townsville for my daughter's medical graduation week.

We were advised that there was a COVID positive case at the graduation ceremony with all attendees being considered low risk needing to be tested as soon as convenient.

This message was disappointingly followed an hour later by the cancellation of the Graduation Ball ordered by the State Chief Health Officer. Tears and buggar!

I wish all members an undisturbed and warm family Christmas, that work is not interrupted and that your children are accepted into whatever course or work place they would like to be in.

2022 will still be a difficult year but more tolerable if our families are safe and can travel, even if only a little.

Roger

*Dr Roger Faint
President SCLMA.*



*The SCLMA
thanks
Sullivan
Nicolaides
Pathology for
the distribution
of the monthly
newsletter*



**Sullivan
Nicolaides**
PATHOLOGY
Quality is in our DNA



CONTACTS:

President	Dr Roger Faint Ph: 0448 848 327
Vice President and Meetings Convenor	Dr Scott Masters Ph: 5491 1144 (W)
SCLMA Life Memb.	Dr Wayne Herdy
Secretary:	Dr John Evans
Treasurer:	Dr Peter Ruscoe
Newsletter Editor:	Dr Mara Clarson
Meetings Convenor:	Dr Alicia Lorenz
Committee:	Dr Grant Eddie Dr Jonathan Last Dr James Tunggal Dr Werner Van Vuuren
GP Registrar Rep:	Position Vacant
Hospital Liaison:	Dr Shrey Singh
PHN Representative:	Dr Jon Harper
Junior Docs Reps:	SCJDS alternating doctors Dr Katherine Rimmer (P) Dr Danielle Patti (VP)

For general enquiries and all editorial or advertising contributions and costs, please contact:

Jo Bourke (Secretariat)

Email: admin@sclma.com.au

Mob: 0407 037 112

Fax: 5479 3995

The Sunshine Coast Local Medical Association welcomes contributions from members, especially *'Letters to the Editor'*.

Please address all correspondence to:

SCLMA PO Box 549 Cotton Tree 4558

Email: admin@sclma.com.au

Fax: 5479 3995

Newsletter Editor: Mara (W) 07 5437 9788

Disclaimer: The views expressed by the authors or articles in the newsletter of the Sunshine Coast Local Medical Association Inc. are not necessarily those of the Sunshine Coast Local Medical Association Inc. The Sunshine Coast Local Medical Association Inc. accepts no responsibility for errors, omissions or inaccuracies contained therein or for the consequences of any action taken by any person as a result of anything contained in this publication.



NO JANUARY NEWSLETTER

FEBRUARY 2022 NEWSLETTER

Deadline 15th FEBRUARY 2022

- What would you like to see in the newsletter?
- Do you have some jokes we can publish (and not offend anyone!!).

Our circulation via email, post and courier (Sullivan Nicolaides Pathology) reaches more than 1,000 recipients!

Contact Jo: Mobile: 0407 037 112

Email: admin@sclma.com.au

Fax: 5479 3995

We welcome new content - case studies, local news and photos.

If you are a new member, please send in a short bio and a photo to introduce yourself.

ARE YOU A MEMBER?

If you are not a member please complete the application form available on the website:

www.sclma.com.au.

You will need two proposers to sign your application form. If this is a problem, come along to a monthly clinical meeting to introduce yourself

Enquiries: Jo Ph: 0407 037 112

Email: admin@sclma.com.au

Are you listed on the Member Directory on our website? Are your details correct?

Directory form available on the website.



HIGHLIGHTS in this issue:

- P 5: SCHHS - GPLO December
- P 7: USC - Clinical Trials
- P 9: PHN - December Update
- P 11: WAYNE HERDY - Christmas
- P 13: BPH - Karen Clark GM
- P 15: SCUPH - Justin Greenwell CEO
- P 17: POOLE GROUP - December
- P 19: AMA Queensland Foundation
- P 21: TRAVEL - Larapinta NT
- P 23-25: AMA Qld - PRESIDENT'S REPORT
- P 27: VARIETY BASH 2021
- P 29: APPLICATION FORM

Please 'like', 'share' and 'follow' our Facebook page: [sunshinecoast local medical association](#).

**ALL COVID-19 UPDATES
ARE UPLOADED AS RECEIVED.**

Website: www.sclma.com.au

FIRST CLINICAL MEETING FOR 2022**THURSDAY 24 FEBRUARY 2020****VENUE - MAROOCHYDORE
SURF FUNCTION ROOM****Dr Warren Jennings-Bell, Consultant
Physician Rehabilitation Medicine****'Medical Management of Spasticity'****Dr Peter Patrikios, Neurologist (TBC)****Topic: To be advised.****Sponsored by AbbVie Pty Ltd.****Queries: Jo Ph: 0407 037 112****Email: admin@sclma.com.au****Meetings already booked for 2022****Still taking bookings.****Ph: 0407 037 112**

*Give a gift that
lasts forever
this Christmas*

Donate a Virtual Brick in honour
of a loved one, colleague or a
valued client this festive season
and support patients and families
when they need it most.

DONATE TODAY WISHLIST.ORG.AU



Sunshine Coast Orthopaedic Clinic

Knee OA
Management

NEW GUIDELINES FOR MANAGEMENT OF KNEE OSTEOARTHRITIS



The AAOS (American Academy of Orthopaedic Surgeons) have recently released new guidelines for management of knee osteoarthritis. This is now the third iteration of these evidence based guidelines. This year there is a complete re-write with recommendations being stratified according to the strength of evidence to support or not support the modality into strong, moderate or limited evidence. The following is a summary of these recommendations.

Strong Recommendations in favour of:

- ★★★★ Supervised exercise, unsupervised exercise &/or aquatic exercise
- ★★★★ Self-managed programmes
- ★★★★ Patient education
- ★★★★ Oral NSAIDs
- ★★★★ Oral paracetamol
- ★★★★ Topical NSAIDs

Moderate Recommendations in favour of:

- ★★★☆☆ Canes/Walking stick
- ★★★☆☆ Unloader braces
- ★★★☆☆ Neuromuscular training
- ★★★☆☆ Weight loss (evidence downgraded)
- ★★★☆☆ Intra-articular steroids
- ★★★☆☆ Arthroscopic partial meniscectomy can be used for meniscal tears in patients with mild to moderate osteoarthritis who have failed physical therapy and other nonsurgical treatments

Limited Recommendations in favour of:

- ★★☆☆☆ Oral/dietary supplements may be helpful but evidence is inconsistent/limited and additional research is needed to clarify the efficacy of;
 - Tumeric
 - Ginger extract
 - Glucosamine
 - Chondroitin
 - Vitamin D
 (evidence downgraded)
- ★★☆☆☆ Manual therapy in addition to an exercise programme (evidence downgraded)
- ★★☆☆☆ Massage may be used in addition to usual care (evidence downgraded)
- ★★☆☆☆ FDA-approved laser treatment may be useful (evidence downgraded)

- ★★☆☆☆ Acupuncture may improve pain and function (evidence downgraded)
- ★★☆☆☆ TENS may be used to improve pain and or function (evidence downgraded)
 - a. Percutaneous Electrical Nerve Stimulation for pain and function
 - b. pulsed electromagnetic field therapy may improve pain (evidence downgraded)
- ★★☆☆☆ Extracorporeal Shockwave therapy
- ★★☆☆☆ PRP
- ★★☆☆☆ Denervation therapy
- ★★☆☆☆ High Tibial Osteotomy

Strong recommendations against use of:

- ★★★★★ Lateral wedge insoles
- ★★★★★ Oral narcotics including Tramadol

Moderate recommendations against use of:

- ★★★☆☆ Hyaluronic acid intra-articular injections
- ★★★☆☆ Arthroscopic lavage and or debridement

Consensus Statements; ★★★★★

Dry needling and free-floating interpositional devices should not be used

These recommendations can be used in determining management strategies in primary care management of knee osteoarthritis prior to considering knee replacement surgery.

Of particular interest is the new recommendation against any narcotic use, recommendations against hyaluronic injections, and recommends for arthroscopic partial meniscectomy if not responding to non-operative treatment in mild to moderate disease.

Further information can be found on our website at www.sunshineortho.com.au

The original document can be downloaded at <https://www.aaos.org/globalassets/quality-and-practice-resources/osteoarthritis-of-the-knee/oak3cpg.pdf>

For appointments contact

Dr Steven Lawrie
Suite 17, Kawana Private Hospital
5 Innovation Parkway, Birtinya QLD 4575

p: 07 5493 3994 | f: 07 5493 3897
e: sunshineortho@bigpond.com.au | [sunshineortho.com.au](http://www.sunshineortho.com.au)





Smart Referrals – have your say

The Smart Referrals Support Team wants your feedback.

You are invited to provide feedback on your experience using GP Smart Referrals via a short 2 Minute survey.

Click the link to start the survey. [GP Smart Referrals | 2 Minute Survey \(office.com\)](https://office.com)

The survey is open until 31st January 2022. Your **anonymous** feedback will be sent directly to the Smart Referrals Support Team to help them optimise the solution and continue to improve users' experience.

The support team appreciates your time and looks forward to assisting you with Smart Referrals in the future.

Hospital in the Home - referrals are welcome

GPs have the option to admit patients directly to Hospital in the Home (HiTH).

HiTH provides eligible patients acute hospital level care in their homes (including nursing homes) for a broad range of conditions – and importantly - enables patients to bypass the Emergency Department.

Please consider admitting eligible patients for the following conditions:

- Exacerbation of COPD
- CAP (Community Acquired Pneumonia)
- Hyperemesis gravidarum requiring IV rehydration
- Cellulitis
- Pyelonephritis

The admission process is easy: Contact the HiTH Medical Officer (available 24 hours) via the SCUH switchboard Ph 07 5202 0000.

For more information about the conditions accepted and eligibility criteria, see HealthPathways:

<https://sunshinecoast.communityhealthpathways.org/97125.htm>

The GP Liaison Unit wants to hear from you!

Send us an email or give us a call: SCHHS-GPLO@health.qld.gov.au; Phone: 5202 3822

The GP Liaison Officers wish you a very *Merry Christmas* and look forward to working with you in the new year.





Choosing the right surgeon for your patients on the Sunshine Coast isn't rocket science - it's brain surgery.

Sunshine Coast Neurosurgery is the specialist practice of Dr Stephen Byrne, who has worked on the Sunshine Coast since 2017.

Dr Byrne MBChB, MRCSEd, FRACS underwent his neurosurgical training in Melbourne, Adelaide & New Zealand before gaining his Fellowship of the Royal Australasian College of Surgeons.

In fact, Stephen is the only fellowship-trained spine surgeon on the coast endorsed by both the Australian Orthopaedic Association and the Neurosurgical Society of Australasia.

At Sunshine Coast Neurosurgery all patients receive one-to-one pre-operative counselling and tailored personalised care using the latest techniques to deliver world-class healthcare.

Please feel free to call Sunshine Coast Neurosurgery to discuss any neurosurgical issue and we look forward to helping your patients along the road to recovery.

List of Services

Sunshine Coast Neurosurgery use their extensive experience to treat many common conditions such as:

- Cervical and lumbar degenerative conditions
- Brain tumours
- Spine tumours
- Pituitary tumours
- Chiari malformations.

Plus they have a specialist interest in minimally invasive brain and spine surgery.

Sunshine Coast University Private Hospital
Suite 17, 3 Doherty Street, Birtinya QLD 4575

T 07 5437 7256
E info@scneuro.com.au



www.scneurosurgery.com.au



Clinical TRIALS

Despite the challenges of COVID-19, our work continues and is more relevant ever before

Sunshine Coast



2021 saw USC Clinical Trials participate in more clinical trial research activities than ever before including initiating 33 new clinical trials which engaged 9,201 people in the community and enrolling over 700 participants.

Highlights across the many trials include four COVID-19 vaccine trials, a needle-free patch vaccine study, completing 2 malaria challenge trials, an increase in cancer trials portfolio and further expansion into early phase healthy volunteer research.

We averaged 660 visits per month into our four locations, reaching close to 1,000 in September and October.

To date we have partnered with 49 industry partners including 39 sponsor companies and 10 contract research organisations.

From three staff in 2015, we have grown the workforce to over sixty staff across four sites including Brisbane, Sunshine Coast, Moreton Bay and Oncology clinic in Buderim, Sunshine Coast.

Oncology & Haematology



We have been driving innovation through projects such as our consumer confidence index initiative, to provide a voice to our participants by offering a systematic engagement platform which solicits feedback on perspectives relating to service delivery and experiences when on a trial.

As another tumultuous year comes to an end, we would like to sincerely thank all our participants who have been pivotal to the success of USC Clinical Trials: we thank you for your interest, your ongoing enthusiasm for medical research, and your support and advocacy. Our USC Clinical Trials Team would like to wish you all a safe and enjoyable Christmas and New Year and we look forward to working with our community in 2022.



Sunshine Coast

Level 1/9 Ochre Way
Sippy Downs QLD 4556
(07) 5456 3797



Moreton Bay

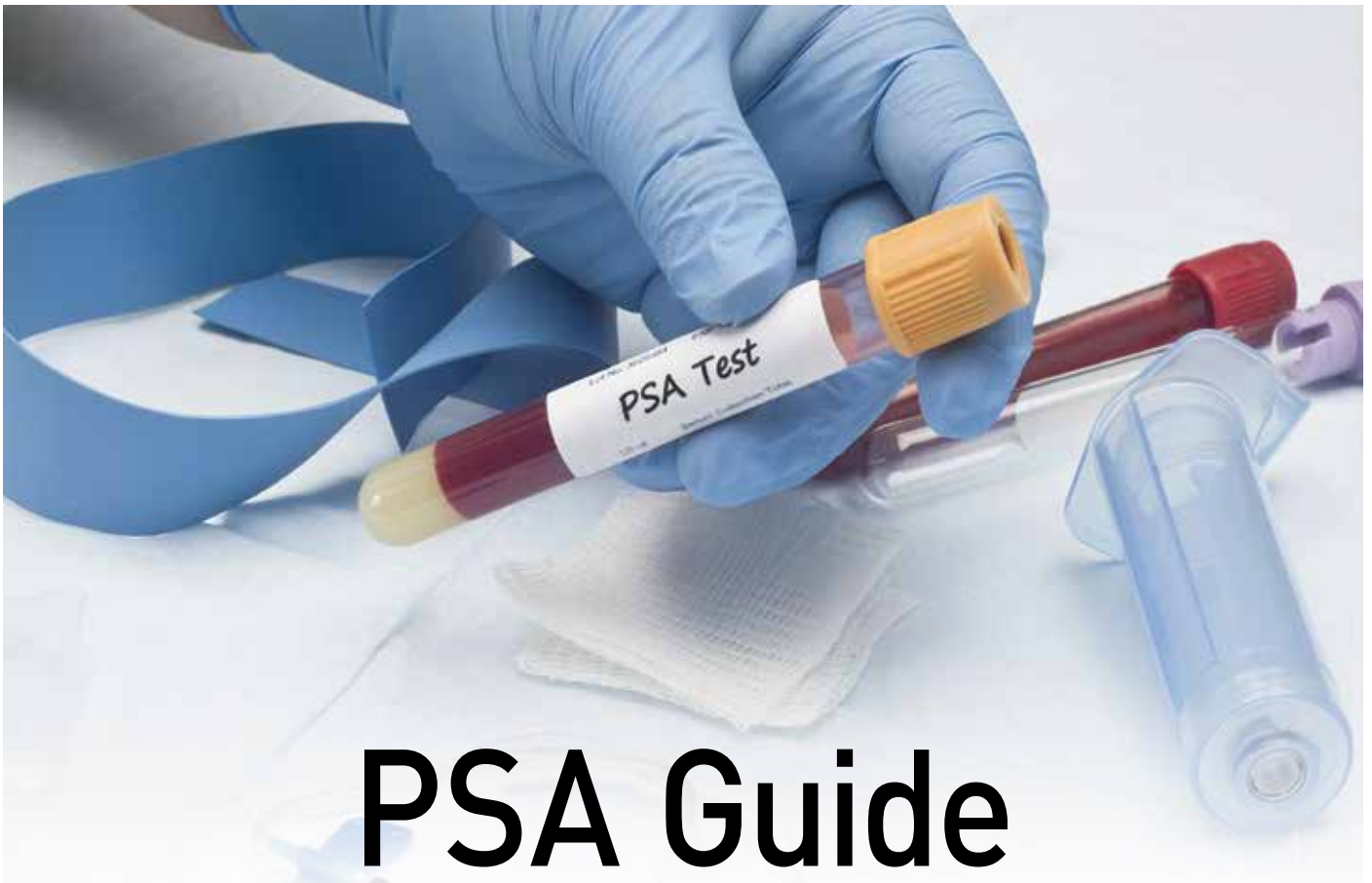
Level 1/19-31 Dickson Road
Morayfield QLD 4506
(07) 5456 3965



Brisbane

Building A2, SW1 Complex
52 Merivale Street
South Brisbane QLD 4101
07 5409 8630

usc.edu.au/trials



PSA Guide

Early detection saves lives

PSA >3 is a red flag

(>2 if positive Family Hx, BRCA)

Repeat PSA in 1-3 months with free/ total ratio

Refer if:

Second PSA is still >3 (2)

Or anytime if there is a hard prostatic nodule
or PSA increases while on Duodart

Refer to:

Dr. Tony Gianduzzo or A/Prof. Troy Gianduzzo



Sunshine Coast Urology Clinic

Buderim Prostate Clinic

A. Suite 2/5 Lyrebird St, Buderim QLD 4556

P. +61 7 5444 0672 **F.** +61 7 5444 0997

E. info@buderimprostateclinic.com.au

W. buderimprostateclinic.com.au

CEO REPORT - DECEMBER 2021

Pattie Hudson



It is hard to believe it is that time of the year again, mere moments away from Christmas and a much-needed break for so many of us in the primary healthcare sector.

I would like to take this opportunity on behalf of Central Queensland, Wide Bay, Sunshine Coast PHN to thank you, our partners in primary healthcare, for your hard work and commitment to improving the health of our communities during another challenging year with COVID-19 in our lives.

It was almost a year ago now, in the first week of January, that the Federal Government released its COVID-19 vaccine roll-out strategy for Australia.

A large part of that strategy relied on accredited general practices delivering vaccination services to the community.

With our established communication channels and strong relationships with primary healthcare providers, the PHN was able to play a pivotal role in facilitating the EOI process to general practices across our region.

We're so grateful almost two thirds of general practices across the Sunshine Coast and Gympie opted to join the Commonwealth's COVID vaccination roll-out, with 100 practices administering the AstraZeneca vaccine by the end of June.

To support the roll-out, we embedded a dedicated COVID Vaccination Program Coordinator within our primary healthcare team to act as your primary point of contact for queries and throughout 2021 our team has recorded more than 3,000 engagements (emails, phone calls and practice visits) with general practice.

We have worked hard to provide you with a regular, trusted source of information with bi-weekly newsletters, resources on our website, and support from your primary health care officers.

I'm so proud of the great efforts our teams have made in keeping you updated, informed and supported.

Despite multiple challenges around the eligibility and availability of the COVID-19 vaccine, all frontline healthcare staff - regardless of your participation in the roll-out - have gone over and above to provide care for your patients.

It's important to be mindful of the impact COVID-19 has had on our lives professionally, as well as personally, and to take steps to safeguard our own health and wellbeing.

In the absence of your own preferred methods for self-care, the Department of Health's Head to Health website is an excellent place to find Australian digital mental health and wellbeing resources, for yourself or for someone you care about.

As border restrictions lift and we look ahead to 2022, the reality of living with COVID positive patients in our communities will soon be upon us. It will be a new challenge, and one we look forward to tackling together with you.

Until then, I hope you have the opportunity to reflect positively on your hard work from this past year, and wish you and your families a safe and happy festive season.

Pattie Hudson

CEO Central Queensland, Wide Bay, Sunshine Coast PHN



Your pathology provider on the Sunshine Coast

Results (24 hours)

P: 1300 778 555

Added tests

P: (07) 3377 8528

Sonic Dx / IT Support

P: 1800 100 769

Doctor Stores Request

F: (07) 5459 1440

Faxed Pathology Request Forms

F: (07) 5459 1440

www.snp.com.au

Local Laboratories

Birtinya P: (07) 5459 1400

Kawana P: (07) 5459 1433



An advertisement for Dan Everson Podiatry. The background is a solid dark blue. On the right side, there is a photograph of a woman with blonde hair, wearing a red sports bra and dark blue leggings, captured in a dynamic jumping pose with her arms raised. To the left of the woman, the text "DAN EVERSON PODIATRY®" is written in white, with a white stylized logo of two footprints to its left. Below this, the text "Helping the Sunshine Coast" is in orange, followed by "Move Without Pain.®" in large white letters. At the bottom left, it says "To book call 1300 300 410 or visit daneverson.com.au". At the bottom, a list of locations is provided in orange: "Maroochydore | Noosa | Nambour | Caloundra | Morayfield | Deception Bay | Indooroopilly".

This is the silly season

Wayne Herdy



This is the silly season, the season when people behave in ways that are truly silly.

The retail industry rejoices that so many will spend sums of money, unequalled at any other time of the year, to buy consumer goods of questionable value, some of which are practical and even necessary, but so many of which will become trash well before their expected lifespan.

People indulge in excesses of eating, drinking, and outrageous behaviour. Christmas in Australia comes in midsummer, the least sensible time to spend extended times exposing ourselves to ultraviolet irradiation. And we hear daily reminders of the road death toll throughout the season.

It is a time when the homeless, the isolated, the lonely, feel more than ever alone, unloved, unwanted. It is a time when those who suffered losses through the year feel those losses ever so keenly. I rarely introduce my personal life into my columns, but this is my first Christmas without my wife of 28 years. I leave it to my reader to reflect briefly on the impact of this event, not only for your humble scribe but for all the thousands who suffered a similar loss.

This is the Christians' holy season, a time to celebrate the anniversary of the birth of their God incarnate in human form. In an ever-increasing secular world, the true story of Christmas gets wrapped in a distorted traditional complex that has only a partial relevance to the real Biblical narrative. With Australia becoming increasingly multicultural, the Christian celebration is relevant to even smaller proportions of the population.

This is the holiday season, a time when so many take medical risks, at a time when a huge proportion of health resources have also chosen to holiday, leaving a decimated workforce to cope with an accelerated demand for services.

Sunburn, dietary errors, injuries acquired learning to use unfamiliar sporting or transport equipment, all add to the burden of health problems. And there are always the travellers who come from far away but left their regular medications at home, you know, the little white tablets.

But we must also look beyond the jaded view of those medical professionals who continue working through.

Christmas is a family time, a time for bringing families together, a time for loving and caring. It is sadly and so often the only time of the year that brothers and sisters, aunts and uncles, grandparents and grandchildren, are able to gather in the folds of safety, warmth and love that the word "family" conjures up.

Old feuds and almost-forgotten hostilities might rekindle, but more often we see the renewal of the most valuable bonds than mankind knows, the bonds of kinship. New brides and other partners are brought within the fold and forge links that will last the rest of their lives.

Yes, the Christmas holiday period is a complex time. But whatever it means to you, it is difficult for almost all my readers to escape the two most positive aspects of the season. For those of you who have families, remember to nurture and cherish those bonds. For those of you who have any old-fashioned religious upbringing, I pray that your God may go with you in the coming days.

Wayne Herdy.



Designing better care

GenesisCare radiation oncology

We provide advanced radiation therapy techniques and continuously invest in cancer treatments and technology that have less side effects, and leads to best possible outcomes and quality-of-life.

Our radiation oncologists:



Dr Debra Furniss
GI, breast, lung, SABR, SRS, benign diseases, skin and palliative



Dr James MacKean
Prostate brachytherapy, urological, GI, SRS, haematology and palliative



A/Prof Alex Tan
Prostate brachytherapy, urological, lung, GI, stereotactic radiotherapy and MR Linac



Dr Bradley Wong
Wide field skin, prostate, urological, benign conditions, breast and palliative

Get in touch:

Tel: (07) 5374 8100 | receptiononcologybuderim@genesiscare.com
Treatment centres located at Buderim and Nambour.

GenesisCare Provides:

- Radiation therapy for most cancer types
- Treatment for non melanoma skin cancer
- Rapid access palliative radiation therapy
- Treatment for benign conditions e.g Dupuytren's and keloid scars
- Stereotactic radiation therapy for cranial, lung, spine, bone and liver lesions
- Personalised care without a waitlist
- Patient transport service

Meet A/Prof Alex Tan

Radiation oncologist

GenesisCare warmly welcomes the newly appointed radiation oncology specialist to our Sunshine Coast team.



A/Prof Alex Tan MBBS, FRANZCR

Special Clinical interests: Prostate brachytherapy, urological, lung and gastrointestinal lesions, stereotactic radiation therapy and MR Linac.

Dr Alex Tan completed his undergraduate degree at the University of Melbourne in 1999 and specialist training at Peter MacCallum Cancer Centre in 2008. He then completed a Fellowship with the Academic Urology Unit at the Royal Marsden Hospital and Institute of Cancer Research in the UK.

Following this, Dr Tan returned to Australia to work at the Townsville Cancer Centre, North Queensland, until 2021.

Dr Tan is heavily involved in education, research, and the development of new services. He introduced the stereotactic body radiation therapy service to North Queensland in 2013, and was the lead of the MR-Linac project which saw the implementation of the first MR-Linac in Australia in 2019.

Dr Tan lectures medical students weekly, served as the Director of Training for 8 years and has been a phase II examiner for the Royal Australian and New Zealand College of Radiologists since 2015. He has been principal investigator for a number of national and international trials.

These efforts in the education and research sphere have resulted in his appointment as Associate Professor at James Cook University.

Contact Dr Tan for patient/treatment discussion on 5374 8100 or email receptiononcologybuderim@genesiscare.com

genesiscare.com

“Through an active partnership and strong communication, I am committed to helping patients navigate their cancer journey in a positive way.”

A/Prof Alex Tan





KAREN CLARK
GENERAL MANAGER

BUDERIM PRIVATE HOSPITAL

DECEMBER 2021

Dear SCLMA colleagues,

Thank you for the opportunity to provide you with a short reflection on 2021 here at Buderim Private Hospital and how we have contributed to our Mission of helping people to *"live life in all its fullness"* John 10:10.

2021: Year in review

COVID-19: It has been a big year with COVID-19 patient precautions and visitor restrictions in place together with the associated lockdowns, mask wearing and travel restraints. We have continued to test and refine our hospital pandemic plan and are confident we are ready to respond to future challenges as the Queensland border re-opens and there are COVID-19 cases in the community.

Cyber incident: Despite a cyber incident taking place at our hospital and UnitingCare more broadly in April 2021, our team pulled together to put alternate processes in place to ensure patients were not impacted and continued to receive high-quality care.

Capital expenditure: UnitingCare continues to provide our hospital with major investment in new equipment and facility improvement works.

Patient satisfaction: We have continued to receive excellent patient satisfaction rates with departments

such as the Emergency Centre and Maternity receiving patient ratings of over 95% this year.

Quality and safety: This year saw a decrease in the falls and pressure injury rates, which both sit below the industry average.

Investment in our people: We have launched an Emerging Leaders program to build competency within our team and continue to invest in our staff recognition program to reward team members for their outstanding efforts.

Investment in our community: We have proudly sponsored the SCLMA Gala Dinner, the Sunshine Coast Business Awards and the Generation Innovation Awards to give back to our community and the people we serve. We also sit on our region's health panel to advocate for our patients and contribute to our region's health response.

New initiatives: We are continuing to innovate and respond to the needs of our community with new programs being launched including those relating to eating disorders and bipolar disorder.

I am proud to provide you with this update and communicate how patients are truly at the heart of everything we do here at Buderim Private Hospital. 2022 will no doubt bring about both challenges and opportunities and I am confident our team will respond to these with the unique blend of care and commitment for which they are renowned.

On behalf of the Buderim Private Hospital team, I would like to take this opportunity to wish you a happy and safe Christmas and New Year. I look forward to providing you with further hospital updates in 2022.

Kind regards,
Karen Clark | General Manager



Acute Admissions 5430 3314

buderimprivatehospital.com.au

Proudly part of
 **UnitingCare**

 **Buderim Private
Hospital**

OFFERING THE LATEST IN JOINT REPLACEMENT TECHNOLOGY

Dr. Daevyd Rodda leads a multidisciplinary team using the latest innovative practices and technology in hip and knee replacement surgery.

Sunshine Coast Orthopaedic Group offers:

- Anterior Minimally Invasive Hip Replacement
- Augmented Reality Knee Replacement
- Kinematic Alignment Total Knee Replacement
- Robotic Knee Replacement

*Dr. Daevyd Rodda
Orthopaedic Surgeon*



SUNSHINECOAST
ORTHOPAEDIC GROUP

Contact us today for patient referrals.

Phone: 07 5493 8038

www.scorthogroup.com.au



Excellence in Prostate Cancer Diagnosis & Management

Tim graduated from the University of Edinburgh and completed advanced training in urology at teaching hospitals in London and Queensland. He has trained extensively in da Vinci Robotic Surgery at the University Hospital, Leipzig, and the Wesley Hospital.

Tim successfully introduced Robotic Prostate and Kidney Surgery to Buderim Private Hospital. He has pioneered MRI guided robotic transperineal prostate biopsy for safe and accurate diagnosis.

DR TIM NATHAN

MB ChB (Edin), FRCS (Eng), FRCS (Urol), FRACS (Urol)

Suite 6

Buderim Private Hospital

12 Elsa Wilson Drive

Buderim

Ph: 07 5370 2095

Fx: 07 5301 8120

www.drtrimnathan-urology.com.au

Specialising in:

- Mona Lisa Robotic Transperineal Prostate Biopsy
- Da Vinci Robotic Prostatectomy & Renal Surgery
- BPH - Laser Prostatectomy & Urolift
- Stone Disease
- Penile Prosthesis Surgery
- Vasectomy Reversal
- Urodynamic Studies

Season's Greetings

Wishing you and your loved ones a safe, happy, refreshing festive season.

Thank you for your support in 2021.



We look forward to working together to keep delivering great quality health care on the Sunshine Coast in 2022.

Celebrating some of the year's highlights from across the Ramsay Health Care Sunshine Coast network of hospitals...

At Noosa Hospital

- We successfully completed NSQHS Standards 2nd Edition Accreditation
- Our team cared for the most-ever Emergency Department presentations: 21,191 in FY '20/'21 (up 12% on previous year)
- We supported ophthalmic surgery by investing over \$200,000 in a ZEISS Lumera microscope

At Nambour Selangor Private Hospital

- We invested in a new Olympus Colposcope, providing high quality optics and smooth manoeuvrability for gynaecology care.
- Rehabilitation services continued to grow, including around \$100k for new equipment and more space for our occupational therapy team

At Sunshine Coast University Private Hospital

- We marked milestones including our 500th cardiothoracic surgery in April, and our 200th transcatheter aortic valve (TAVI) procedure in June.
- Our structural heart program was also enhanced with MitraClip technology

Across our network

- Ramsay Health Care Sunshine Coast network welcomed so many new admitting VMOs!
- We launched Vestibular Clinics at Noosa, Nambour Selangor and Gympie
- New opportunities opened with the launch of Ramsay Consulting Suites in Hervey Bay and on Bribie Island.



Ramsay
Health Care



The Sunshine Coast's only integrated Cancer Centre

Our facility is home to:

- Highly experienced team of Medical Oncologists and Clinical Haematologists
- Day infusion unit providing the latest and cutting edge treatments (including chemotherapy, immunotherapy, targeted therapy, iron infusions and venesections)
- GenesisCare Radiation Oncology
- Cold cap therapy to prevent/minimise hair loss caused by certain chemotherapy treatments
- Allied Health including Clinical Psychology, Exercise Physiology, Dietetics and Oncology Massage Therapy
- McGrath Breast Care Nurse
- Clinical Trials

Our Team:



Dr Hong Shue
Medical Oncologist
MBBS (Monash), FRACP



Dr Brenton Seidl
Medical Oncologist
MBBS, BSc, FRACP



Dr Sorab Shavaksha
Clinical Haematologist
MBChB (Leeds), FRACP, FRCPA (2013)



Dr Joshua Richmond
Clinical Haematologist
MBBS(Hons), FRACGP, FRACP, FRCPA



Dr Alice Livings
Clinical Haematologist
BSc(Hons), MBBS(Hons), FRACP, FRCPA



Dr Manjunath Narayana
Clinical Haematologist
MBBS, FRACP, FRCPA



Samantha Clutton
Clinical Psychologist
MPsychClin, FCCLP



Sarah Bloomfield
Dietitian & Nutritionist
APD, APN



Jesse Goldfinch
Exercise Physiologist
BClinExSc, ESSAM, AEP



SUNSHINE COAST
HAEMATOLOGY & ONCOLOGY CLINIC
– Montserrat Cancer Care –

Delivering Quality Healthcare Locally

Buderim Day Hospital & Consulting Suites:
10 King Street, Buderim QLD 4556

Noosa Consulting Suites:

24 Sunshine Beach Road, Noosa Heads QLD 4567

P: 07 5479 0000 | F: 07 5479 5050 | schoc.com.au

GP/Specialist Priority Line:
07 3054 0758



Tania Shaw
Massage Therapist
DipRM, CLT, OMT



Incorporating:
Poole & Partners Pty Ltd
ABN 63 010 478 181

Directors:
Donald G. Poole **B. Bus., CPA**
David A. Darrant **B. Bus., CPA**
Craig T. McCulloch **B. Bus., CPA**
Neil R. Cooke **B. Com., CA**
Dale R. Trickett **B. Bus., CPA**

SMSF and Cryptocurrency

Recently a colleague of mine asked me to ring a client who wanted to know if his SMSF could invest in Bitcoin, a Cryptocurrency.

The general story I got was that the trustee did not have enough capital to invest in property, but had been following the Cryptocurrency market with interest.

Wow, it never seems to amaze me how quickly the world changes and how those changes obviously impact all aspects of life including the Investment opportunities on offer. The question asked by the client is a valid one.

So let's look at key principles associated with a SMSF investing in Cryptocurrency .

Under Australian tax law Cryptocurrency is defined as an Asset. As with all Assets actively traded, its value can rise and fall and when this prompts a disposal a gain or loss can be assessed under the Capital Gains Tax provisions of the Income Tax act.

Now it is common knowledge that a SMSF can receive favorable treatment under the Income Tax Act when compared to other taxpayers.

So I had a bit of an understanding as to one of the motivations prompting the clients' initial question.

So what are the key points I was prepared to discuss with this client?

The short answer to his question is yes a SMSF could invest in Cryptocurrency provide:

- The investment is allowed under the funds trust deed and meets Sole purpose Test.
- The fund has formulated an Investment strategy that allows for such an Investment.
- The Investment must be held in the name of the SMSF.
- The Investment must be kept separate from the member's personal assets.
- The purchase of the investment must be at arms-length from a non-related party.
- The asset must be kept safe and secure consider a cold wallet.
- The assets should be valued according to the ATO guidelines.
- It should be acquired on an Australian-Base exchange

A quick review of the valuation charts associate with Bitcoin over the last few years sheds some insight as to the volatility of the investment and the risk profile of the client. Cryptocurrency is a high-risk investment but it does not mean a SMSF cannot invest in the asset class.

It is prudent to remember that the main purpose of Superannuation is to help fund a quality of life and wellbeing in retirement.

With that in mind a Cryptocurrency can play a part in a well structure and thought out Investment Strategy with the aim of reducing potential risks. Poole Group can help you understand the key principle of your Investment Strategy.

Level 1, 8 Innovation Parkway, Birtinya QLD 4575 / PO Box 206, Mooloolaba QLD 4557

P: 07 5437 9900 **F:** 07 5437 9911 **E:** poole@poolegroup.com.au

www.poolegroup.com.au

Liability limited by a scheme approved under Professional Standards Legislation*
*Other than for the acts or omissions of financial services licensees



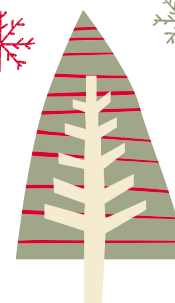
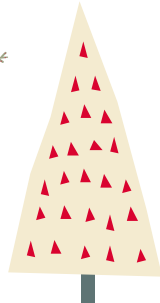
SUNSHINE COAST
RADIOLOGY

MAY YOUR DAYS BE

Merry and Bright

The Radiologists and staff of Sunshine Coast Radiology would like to thank you for your continued support throughout the year.

We wish you and your family a very Merry Festive Season and a Happy New Year.



☎ 1300 MY SCAN | ☎ 1300 697 226 | 🌐 scradiology.com.au



We wish all our clinicians
a Joyful Christmas &
a Happy New Year.



*Thank you for your
support in 2021.*

Our clinic will be closed 25 December to 9 January 2022.



www.gympiespecialists.com

CALL TODAY 07 5321 3500



Dr Dilip Dhupelia
AMA Queensland Foundation Chair



Letter to the Editor

AMA Queensland Foundation – Beddown volunteers

I wish to highlight the work of an organisation called **Beddown**, whose dynamic CEO, Norm McGilvray, and I met at a city café recently.

You may have seen media about this organisation which turns car park spaces that are busy during the day but are vacant at night, into pop-up accommodation for homeless people.

Beddown believes everyone deserves a bed to sleep in and in repairing the quality of life for people experiencing homelessness, before building a life of quality. **Beddown** also works with other charitable organisations to provide complementary services such as laundry and showers, food and beverages, clothing, health and wellbeing, and more.

As the recently elected Chairman of the AMA Queensland Foundation, my coffee chat with Norm involved trialling a programmatic approach

to building a better life for those who are experiencing homelessness and sleeping rough by offering counselling service, motivational interviewing and tackling addictions by offering drug and alcohol testing. This is so we can get people experiencing homelessness employment ready and reverse their homeless state.

I am quite excited as what we as doctors can do to offer this service by providing consultations and guidance to these people who have fallen on hard times. If any SCLMA members, (GPs and non-GP Specialists) are able to offer counselling, support, consultations on drug and alcohol addiction therapies or wish to know more about this wonderful program, please feel free to contact me.

It is such a worthy program.

For those who are interested, please also see this 7News story:

www.facebook.com/7NEWSBrisbane/videos/174787041225023/

Dr Dilip Dhupelia
dhupelia@bigpond.com



WE ARE OPEN FOR ALL PROCEDURES EVERY WORKING DAY OVER THE CHRISTMAS PERIOD

Public Holidays excluded



- X-ray
- Ultrasound
- Low-dose CT
- DEXA
- OPG
- Pain Management & Interventional Procedures

CONTACT US

For referrals and more information
t 07 5391 0366

e reception@theradiologyclinic.com.au www.theradiologyclinic.com.au

31 Plaza Pde
Maroochydore Q 4558



Trust and communication.

We know how important these factors are when you refer a patient to Heart HQ.

Sign up to our monthly GP newsletter so you can keep up-to-date with our latest news, stay abreast of developments in the field of cardiology, find out about our GP education events and more.

Join our mailing list here: www.hearthq.com.au/referrers

**World-class cardiac care
on the Sunshine Coast.**

📞 07 5414 1100

📠 07 5414 1101

hearthq.com.au



CARDIOLOGIST ON-CALL

Available 24/7/365
07 5414 1146

GP PRIORITY LINE

8.30am-5pm,
Monday to Friday
07 5414 1190

Sippy Downs Buderim Birtinya Tewantin Gympie Caboolture Nambour

LARAPINTA TREK (WALK) NORTHERN TERRITORY

John Muir had explained the beauty of traveling through the ruins of the earth in one simple line, "Of all the paths you take in life, make sure a few of them are dirt."

The Larapinta Trek takes you through the jagged landscape of the Northern Territory of Australia. The multi-day trek covers several attractions along the way, claiming to be one of the most thrilling trekking experiences in Australia.



The trek offers the most amazing views along the West MacDonnell Ranges. Trekkers are mesmerized by the numerous gorges, high ridges, and peaceful waterholes that fall along the trail. Revel in the presence of some of the most exotic wildlife that has made a home in the heart of Australia.

Cross the stunning view on the trail

There is no surprise that the trail is full of some of the most striking views. And we make it a point to cross the best of these spots on our list. As the trek begins, we cross Ellery Creek and continue onto the Ormiston Gorge. Stop by Simpsons Gap to be washed over by the beauty of the red stones and quiet waters, harboring vast wildlife. Walk from the Standley Chasm to Serpentine Gorge, moving forward to Counts Point. End the trip as you head back to Alice Springs.

Enjoy the campsite activities

After a long, tiring day of doing what you love and traversing through the red dirt, laying back in your camps sounds very relaxing. The treks keep you comfortable as all the camping arrangements are carried separately. Sit down by the campfire, indulging in all the fun that has been planned for you. Enjoy the meals prepared for you to give you the nourishment you deserve.

All's well that ends well

After you finish the stirring, revitalizing trek of the Larapinta Trail, we ensure that the end is a blast. Even with all its hardships, we believe that this is something worth remembering. We add into the memory by giving the final goodbye to the trek as you leave it in a helicopter, taking in the red landscapes that were the backdrop to your fondest memory!

What we have planned for you

- Spend the first day here taking the rest you need and ensuring that all supplies are packed carefully.
- Begin the trek with the guides giving you common instructions and discussing the path chosen.
- Stop at all the scenic destinations that fall along the trail.
- Make your tents and enjoy the warm blaze of the campfire on rest stops.
- End the trip with a helicopter taking you back from the courageous trail you just finished.

We have some great deals available now.

Give us a call or check out our website for more information www.123travel.com.au

Australian Medical Association Limited
ABN 37 008 426 793

42 Macquarie Street, Barton ACT 2600: PO Box 6090, Kingston ACT 2604
Telephone: (02) 6270 5400 Facsimile (02) 6270 5499
Website: www.ama.com.au



PERMANENT TELEHEALTH BRINGS MEDICARE INTO 21ST CENTURY SAYS AMA

The AMA says the health of all Australians will benefit from the availability of telehealth, which the Government has today announced will be permanently funded through Medicare.

AMA President Dr Omar Khorshid said just over a year ago the AMA was pleased to stand alongside Health Minister Greg Hunt, when he committed to make Medicare-funded telehealth a permanent part of the health system, something the AMA had been lobbying for over many years.

“Today’s announcement is very welcome news. Ongoing telehealth has been locked into our health care system for both GP and non-GP specialist services. This will ensure Australia’s healthcare system continues to be one of the most equitable and effective systems around the world,” Dr Khorshid said.

“Since the beginning of the COVID-19 pandemic we have seen temporary MBS arrangements put in place to support patients to access medical care via the telephone and video.

“These arrangements have been embraced by both doctors and patients, with telehealth giving people access to care while reducing community transmission of the virus.

“The COVID-19 pandemic is still not over, and telehealth will now be able to continue to play a significant role in keeping the community safe, particularly in outbreak situations. It will protect the vulnerable members of the community and help ensure practices can stay open, servicing the community.

“We know just how critical it is to ensure practices can remain open during the pandemic and telehealth, combined with adequate provision of personal protective equipment to medical practices are key to continuing to provide services for patients.”

Dr Khorshid said telehealth also improved access to healthcare for people who found it difficult to take time off work; could not leave children or people they were caring for and who live out of town and away from their GP or non-GP specialist.

“A face-to-face visit to a doctor will still remain an essential part of our health system. However, Medicare was established in 1984 well before people had access to mobile phones or video conferencing and expanding access to telehealth is an overdue reform, which brings Medicare into the 21st century,” Dr Khorshid said.

13 December 2021

CONTACT: 02 6270 5478 media@ama.com.au

Follow the AMA Media on Twitter: http://twitter.com/ama_media

Follow the AMA President on Twitter: <http://twitter.com/amapresident>

Like the AMA on Facebook <https://www.facebook.com/AustralianMedicalAssociation>



*Leading Queensland Doctors
Creating Better Health*

PRESIDENT AND CEO REPORT



Professor Chris Perry OAM and Dr Brett Dale

We are coming to the end of another year of unprecedented health challenges for the profession and the entire community. Lockdowns, border closures, COVID testing, vaccine supplies, and new variants have dominated. We've gone from Alpha to Delta to Omicron, and seen the public mood change from concern and compliance to complacency and acceptance.

As we move into 2022 and the third year of this pandemic, it's important to look back on how far we have come since COVID-19 first emerged.

COVID-19 – YEAR IN REVIEW

Our borders are reopening. Australia still has one of the lowest COVID death rates in the world, and one of the highest vaccination rates. There is much to be proud of, and AMA Queensland has worked hard with the State Government and other stakeholders to get us to this point.

We fought hard to get adequate personal protective equipment (PPE) and fit testing for our frontline health care workers. We advocated vigorously for vaccine supply, for training in vaccine administration and appropriate controls for vaccine storage. We battled successfully for indemnity for GPs who were administering the vaccines, and for better financial compensation for GPs taking part in the vaccine rollout.

We successfully lobbied for mandatory vaccinations for all health care workers, not just Queensland Health employees. With our Workplace Relations Team, we have helped small employers, including GPs and other specialists in private practice, negotiate the difficulties of requiring staff to be vaccinated in order to protect our most vulnerable.

We have been a leading voice for the vaccine rollout, even when that has made us unpopular with some elements of the community. We advocated for a clear roadmap out of COVID from the Queensland Government, and secured a border bubble for health care workers as essential workers. We ensured GPs were the backbone of the COVID-19 vaccine program, and lobbied for fair payments for them, including longer consultations and aged care visits.

We have continued to be an apolitical, bipartisan player, working with the Government and Opposition to deliver the best outcomes for Queenslanders and their health system.



Prof Chris Perry being interviewed by Seven News on the vaccine rollout

88 L'Estrange Terrace, Kelvin Grove QLD 4059 • 07 3872 2222 • qld.ama.com.au



*Leading Queensland Doctors
Creating Better Health*

ADVOCACY ACHIEVEMENTS

While the pandemic has dominated 2021, we have also been busy working on other concerns for the profession and the community.

Emergency departments

Most recently, our Ramping Roundtable delivered its Action Plan for resolving emergency department logjams and hospital bed block. Three key strategies are required to improve the Queensland Health system including strong effective leadership, system and procedural innovation and appropriate investment by the State and Federal Government. The Government must:

1. commit to ongoing investment in more beds;
2. ensure Hospital and Health Services provide fully operational acute hospitals that function seven days a week with extended hours;
3. ensure Hospital and Health Services run hospitals at less than 90 per cent occupancy;
4. direct Hospital and Health Services to conduct a detailed analysis of patient flow within the hospital and report against those; and
5. support alternative models of access to hospital care other than through the emergency department.



Ramping Roundtable Chair Dr Kim Hansen addressing the media

This is an issue of concern for every state and territory, and you can expect to see coordinated action next year as we head into a federal election campaign. Read more on our website at qld.ama.com.au/advocacy/ramping-roundtable-action-plan

Voluntary Assisted Dying

We continue to work with the Queensland Government on how the Voluntary Assisted Dying (VAD) scheme will work when it comes into force in 2023. Our members have told us clearly that they believe early career doctors should be exempt from participating in VAD, and we continue to advocate for a minimum of five years post Fellowship experience for doctors taking part. Again, we thank all our members who contributed to our survey that shaped our submissions to the Government and our continued advocacy on this issue. You come from all specialties and all levels of experience, and your views have informed every submission, every conversation, and every public comment we have made about VAD over the past two years.

Senior Doctors

We have also developed a proposal for a new step down registration category for senior doctors as they move towards retirement, which may provide a 'ready reserve' workforce to support our health system in times of crisis, as has been the case overseas. We thank Associate Professor Geoff Hawson for his ongoing work on this issue.



Industrial Relations Wins

Our industrial relations partner, ASMOFQ (the Australian Salaried Medical Officers' Federation Queensland), secured a five per cent pay rise for Queensland Health-employed doctors and achieved pay equity for Rural Generalists working in rural hospitals. ASMOFQ also achieved several outcomes for Visiting Medical Officers (VMOs), including reactivating the VMO committee, securing equitable pay rises in line with other public hospital doctors, obtaining access to the Queensland Industrial Relations Commission (QIRC) and successfully lobbying for VMOs to be included in Medical Officers' Certified Agreement 6 (MOCA 6).



*Leading Queensland Doctors
Creating Better Health*

Alarming Results in RMO Survey

The sixth *Resident Hospital Health Check*, which evaluates employment conditions for Queensland doctors in training and compares hospitals across the state, showed the stress that the pandemic is adding to our junior doctors. More than half of those surveyed feared making a medical mistake due to fatigue. Read more on our website at qld.ama.com.au/advocacy/resident-hospital-health-check



Supporting Doctors' Mental health and Wellbeing

We know that doctors have faced unprecedented levels of mental and physical strain this year and we have run two campaigns, including *Self-Care September* and *Every Dr needs a GP*. For interns in Queensland hospitals, we have run the *Wellbeing at Work* program, including 24 sessions at 21 hospitals for more than 830 new doctors. We are lobbying the State Government for \$2 million to expand this program to all doctors in the public and private sectors.

Celebrating Members

We are incredibly proud of our members. Not only do we have the 2021 Queensland Australian of the Year, Dr Dinesh Palipana OAM, as a member, we also have the 2022 Queensland Young Australian of the Year, Dr Tahnee Bridson.

Dr Palipana, the first quadriplegic medical graduate and medical intern in Queensland, was recognised not just for his advocacy for people with disability, but for his contribution to scientific advances in treating spinal cord injury.

Dr Bridson was recognised for her dedication to helping doctors, nurses, and all health care workers across Australia and New Zealand cope with the impacts of the COVID pandemic on their own mental wellbeing. We wish her all the best at the national Australian of the Year Awards in January.

The Year Ahead

In 2022, we will continue to support and represent the Queensland medical profession in key issues including the ramping crisis, overdue Medicare changes, continuing to protect health care workers during the COVID pandemic, and advocating for strong health outcomes in the upcoming Federal election.

We urge all members to continue to be a part of the AMA Queensland community of doctors who collaborate, support and connect with each other to advocate for change on the health care issues that matter.

We wish you all a safe and healthy festive season and hope you can spend time with loved ones. Many of you will spend this holiday season working to keep Queenslanders safe and healthy. Our thanks and thoughts are with you all.



88 L'Estrange Terrace, Kelvin Grove QLD 4059 • 07 3872 2222 • qld.ama.com.au

Australian Medical Association Limited
ABN 37 008 426 793

42 Macquarie Street, Barton ACT 2600: PO Box 6090, Kingston ACT 2604
Telephone: (02) 6270 5400 Facsimile (02) 6270 5499
Website: www.ama.com.au



PERMANENT TELEHEALTH BRINGS MEDICARE INTO 21ST CENTURY SAYS AMA

The AMA says the health of all Australians will benefit from the availability of telehealth, which the Government has today announced will be permanently funded through Medicare.

AMA President Dr Omar Khorshid said just over a year ago the AMA was pleased to stand alongside Health Minister Greg Hunt, when he committed to make Medicare-funded telehealth a permanent part of the health system, something the AMA had been lobbying for over many years.

“Today’s announcement is very welcome news. Ongoing telehealth has been locked into our health care system for both GP and non-GP specialist services. This will ensure Australia’s healthcare system continues to be one of the most equitable and effective systems around the world,” Dr Khorshid said.

“Since the beginning of the COVID-19 pandemic we have seen temporary MBS arrangements put in place to support patients to access medical care via the telephone and video.

“These arrangements have been embraced by both doctors and patients, with telehealth giving people access to care while reducing community transmission of the virus.

“The COVID-19 pandemic is still not over, and telehealth will now be able to continue to play a significant role in keeping the community safe, particularly in outbreak situations. It will protect the vulnerable members of the community and help ensure practices can stay open, servicing the community.

“We know just how critical it is to ensure practices can remain open during the pandemic and telehealth, combined with adequate provision of personal protective equipment to medical practices are key to continuing to provide services for patients.”

Dr Khorshid said telehealth also improved access to healthcare for people who found it difficult to take time off work; could not leave children or people they were caring for and who live out of town and away from their GP or non-GP specialist.

“A face-to-face visit to a doctor will still remain an essential part of our health system. However, Medicare was established in 1984 well before people had access to mobile phones or video conferencing and expanding access to telehealth is an overdue reform, which brings Medicare into the 21st century,” Dr Khorshid said.

13 December 2021

CONTACT: 02 6270 5478 media@ama.com.au

Follow the AMA Media on Twitter: http://twitter.com/ama_media

Follow the AMA President on Twitter: <http://twitter.com/amapresident>

Like the AMA on Facebook <https://www.facebook.com/AustralianMedicalAssociation>

VARIETY BASH 2021 Wayne Herdy

The 2021 November Variety Children's Fundraising Bash was from Longreach to Fraser Island from the 6 – 12 November 2021 this year. The Variety Bash is not a race or a rally. It's an adventure with mates driving 30-year-old plus cars through regional parts of Australia that you might otherwise not see, all to help give Aussie kids a fair go. This year it was rain soaked.

Variety – the Children's Charity is dedicated to empowering kids who are sick, disadvantaged or who have a disability. Our work allows children to gain mobility, freedom, get out and about in the community, communicate, achieve independence and increase self-esteem.

Variety gives kids scholarships to encourage their achievements and to provide support to help them reach their full potential and follow their dreams. The Variety Heart Scholarships support kids with an existing talent across the arts, education and sport.

Variety runs inclusive programs for kids who are sick, disadvantaged or have a disability that encourage inclusion and participation and help to provide opportunities to build their self-confidence and make new friends.

Our programs include the Variety Kids Choir, Activate Inclusion Sports Days, Kids Sports Camps, Youth Ambassadors, Just Like You and Bikes for Kids. The Variety Special Children's Christmas Party is the biggest event of its kind in Queensland for kids with disabilities and their families. We work closely with schools, community groups and government organisations to invite approximately 3,000 kids.

These kids face many challenges in life including serious illnesses, physical or intellectual impairment, domestic violence, or living in underprivileged circumstances.

Variety partners with organisations to achieve our shared goal of improving the lives of children living with a disability or in disadvantaged circumstances. Variety's Financial Counselling Service helps families of kids who are sick, disadvantaged or living with a disability work through their financial situation. A free program, run by our own financial counsellors Tony Rigby & Rod White. A most rewarding experience had by all.



WATCH SPACE FOR NEWS OF THE 2022 VARIETY BASH WITH WAYNE AT THE WHEEL AGAIN!

Dusk till Dawn
SLEEP CENTRE



Tewantin, Gympie, Maroochydore, Birtinya, Bli Bli

Ph: 5455 6622 Fax: 5455 6633

Email: admin@dusktilldawnsleep.com.au

Diagnostic • Treatment • Support

Dusk till Dawn Sleep Centre is conveniently located in 6 local areas across the Sunshine Coast and Gympie.



Services:

- Home Sleep Study – Level 2 *Bulk Billed
- Screening Sleep Study – Level 3 *Private Fee
- Paediatric Sleep Study – *Private Fee
- Telehealth Physician Reviews – Bulk billed
- CPAP Treatment/Trial
- Alternative Treatment Options
- Oximetry Reviews
- Routine Consults and Reviews
- Distributor of CPAP
- Sleep Education – Children and Adults
- Home visits
- NDIS
- DVA
- Online Bookings

Our team consists of experienced sleep technicians, scientists, and reporting Respiratory/ Sleep Physicians from the Sunshine Coast and Brisbane. These include; Dr Cheng Jun Siew, Dr Andreas Fiene, Dr John Feenstra, Dr Anna Ridgers, Dr Himanshu Garg and Dr Scott Burgess (Paediatric Sleep/ Respiratory Physician).



ResMed Approved DVA Supplier



SUNSHINE COAST LOCAL MEDICAL ASSOCIATION Inc. ABN: 56 932 130 084
MEMBERSHIP APPLICATION

Enquiries: Jo Bourke Ph: Mb: 0407 037 112 Email: admin@sclma.com.au

<u>NAME</u>	Surname:	First Name:	
<u>EMAIL:</u> _____			
<i>THE SCLMA PREFERS TO SEND MONTHLY NEWSLETTERS & INVITES BY EMAIL</i>			
<u>ADDRESS:</u>			
	Practice/Building		
	Street:		
	Suburb:	Postcode:	
	Phone:	Mobile:	
<u>PRACTITIONER DETAILS:</u>			
	Qualifications:		
	Date of Birth:	Year of Graduation:	
	Hospital employed / Private Practice (cross out one)		
	General Practice / Specialist (cross out one)		
	Area of Speciality:		
<u>PLEASE NOTE:</u> <i>Retired doctors who wish to join the Association are required to attach a letter of good standing from their respective College.</i>			
<u>PROPOSERS:</u> (to comply with the Queensland Associations Incorporation Act, two financial members of the Association are required to nominate each applicant for <i>new</i> membership. Members <i>renewing</i> their membership do not need proposers).			
1. NAME:		Signature:	
2. NAME:		Signature:	
<u>ANNUAL SUBSCRIPTION (GST included):</u>		(Please tick)	<u>PLEASE COMPLETE:</u>
Full-time ordinary members - GP and Specialist		\$ 110	Your Monthly Invitation?
Doctor spouse of full-time ordinary member		\$ 55	By Email?
Absentee or non-resident doctors		\$ 55	By Courier?
Part-time ordinary members (less than 10 hours per week)		\$ 55	By Post?
Non-practising ordinary members, under 60 years old		\$ 55	Your Monthly Newsletter?
Residents & Doctors in Training		Free	By Email?
Non-practising ordinary members, over 60 years old		Free	By Courier?
Patron and honorary members		Free	By Post?
Payment can be made by cheque payable to SCLMA or by direct debit to: <i>SCLMA Westpac Account. BSB: 034-243 ACCOUNT NUMBER: 11-9298</i>			
Please return this form either by email (scan or photo) or Fax 07 5479 3995 of your E.F.T. to: Email: admin@sclma.com.au Post: SCLMA PO BOX 549 COTTON TREE 4558 Fax: 07 5479 3995			
<u>Please note:</u> <i>Membership applications will be considered at the next Management Committee meeting.</i>			

Snap Print-Design

Proudly producing the
SCLMA Newsletter

Your **LOCAL** Medical, Allied Health and Dental Services Print **SPECIALISTS**

We offer an extensive range of medical stationery including:

- Appointment & Business Cards & Letterheads
- Referral & Prescription Pads
- ID & Name Badges
- Patient Information Flyers & Brochures
- Health Promotion & Safety Posters & Signage
- Latex Posters, Pull Up Banners, Window, Floor & Wall Prints
- Survey & E-Marketing Management
- And Much More . . .



Nick Prass



Dannielle McVey



Simon Bennett

Contact **YOUR LOCAL**
SNAP team today
for quality print and
signage. We offer
local delivery.

07 5443 6990

maroochydore@snap.com.au | www.maroochydore.snap.com.au

Shop 1, 52 Sugar Rd, Maroochydore QLD | [f](#) [@](#)

snap



REDCLIFFE LOCAL MEDICAL ASSOCIATION NEWSLETTER

Redcliffe LMA produces a similar newsletter

For full details re advertising go to their website: www.rdma.org.au

Email: RDMAnews@gmail.com

SCLMA ADVERTISING GUIDELINES:

To comply with Section 133 of the National Law and guidelines, advertising of services must not:

Paragraph (a) "Create or be likely to create unwarranted and unrealistic expectations about the effectiveness of the health services advertised"

Paragraph (f) "Claim that the services provided by a particular regulated health profession are better, as safe as or safer than others"

Paragraph (o) "Contain any claim, statement or implication that a practitioner provides superior services to those provided by other registered health practitioners"

PLEASE NOTE THE FOLLOWING:

The anti discrimination commission of Queensland has the following statement on job advertising:

Discriminatory advertising is against the law. Job advertisements need to give the impression that all suitable applicants are welcome to apply. References to sex, relationship status, age, race, religion etc should be avoided, as should the use of words that may indicate a preference for particular groups or may discourage others from applying, eg foreman, tradesman, glamorous, well-built, mature, youthful, office girl etc. Publishers can be fined and be the subject of a complaint to the Commission for publishing discriminatory advertisements that show an intention to contravene the Anti-Discrimination Act 1991. Discriminatory advertisements will therefore often be refused or modified by publishers in order to avoid legal liability.

CLASSIFIEDS

SHARED LEASE AVAILABLE FOR SPECIALIST SUITES ON A PERMANENT BASIS FOR MEDICAL PRACTITIONERS/ALLIED HEALTH PROVIDERS AT MAROOCHY WATERS.

- Brand new fit out:
- 3 x furnished premium consulting rooms.
- Ground level with 4 dedicated parking spots and ample parking in the vicinity.
- Rooms equipped with a computer, hand basin, telephone, and internet connection.
- Access to staff amenities – toilets, kitchenette/microwave oven/ fridge.
- Admin support can be negotiated.
- General practice, pharmacy, and pathology all in the area.

Available from January 2022.

For more information, please contact Sharon Kayrooz on sharon@coastaldigestivehealth.com.au

November 2021

CLOSING CLINICAL PRACTICE

Dr Heyworth will be closing her Child and Family Psychiatry Practice in October 2021.

If you would like to discuss arrangements for existing shared patients, please call **5444 5022**.

August 2021

GENERAL PRACTITIONER - BUDERIM MARKETPLACE MEDICAL CENTRE

- We are looking for a GP to join our busy and well established clinic in the heart of Buderim.
- We are an accredited mixed billing practice, supported by experienced Nursing staff, friendly receptionist and in a supported team workplace.
- We use Pracsoft and Medical Director, using online booking systems. We are also a COVID-19 Vaccination Clinic.

To apply for this position please contact the Practice Manager on (07) 5445 1046

August 2021

VR GP REQUIRED MAROOCHYDORE

Medicine on Second is located in the heart of the CBD in Maroochydore, close to the beach, major shopping centre and public transport. We are seeking a PT/FT GP to add to our doctor owned, accredited family practice, dedicated to providing high quality care. We are a highly regarded mixed billing practice with increasing new patient demand daily. We focus on providing exceptional care and require a like-minded, caring and committed GP to join our team. Our GPs are offered excellent conditions and remuneration with high earning capacity.

About our Practice:

- Fully computerized using Best Practice Software
- Online Bookings, Appointment reminders and recalls
- 6 bed treatment room including 2 private procedure rooms
- Onsite Pathology
- Covid-19 Vaccination Clinic
- Full Nursing Support from an experienced team of Nurses and support staff
- Onsite Carparking for patients and staff

To apply for this role or for a confidential discussion please contact our Practice Manager on practice.manager@medicineonsecond.com.au or (07) 5443 9455

May 2021

GENERAL PRACTITIONER (VR) - SUNSHINE COAST QUEENSLAND

To find out more, please email your resume to admin@nambourclinic.com.au or ring Rowena for an informal chat Ph: **0412 292 666**. *Continuing.*

ANN ST FAMILY MEDICINE – GENERAL PRACTITIONER

- We are looking for a female VR General Practitioner to join our busy team which is GP owned. Part time position offering 75% of billings.
- Full support from an experienced and professional team of nurses and support staff.

Please email your CV to olivia@annstfamilymedicine.com.au or contact Olivia on 0412 113 846.

October 2021

GP REQUIRED FOR A BUSY GP OWNED PRACTICE - SUNSHINE COAST HINTERLAND.

- Hours worked to be decided by the Doctor. Attractive remuneration available. The practice is open Monday to Friday 8am – 5pm, and Saturday by appointment, no after hours
- Full nursing support including enhanced primary care planning, health assessments, vaccinations, treatment room and procedure room assistance. Full time on-site Practice Manager.
- Full allied health support including xray, USS, Ct scans, Physiotherapy, Podiatry, Psychologist and Pathology
- Pharmacy attached to the practice.
- Medical Director and Pracsoft clinical programs used
- Full computer tech support

Contact Yvette Perry. Email: pm@beerwahsurgery.com.au

October 2021

GENERAL PRACTITIONER

We are looking for a VR General Practitioner to join our busy well established GP owned and operated Family Practice. Full time preferred however not essential, with partnership opportunity on the beautiful Sunshine Coast.

We are an accredited mixed billing practice with well- established operating systems and very loyal patient base.

You will be supported by experienced, professional nursing and reception staff in a family friendly workplace.

Please email resume to admin@trinityclinic.com.au or contact Nadine Ware on (07) 5491 9888.

March 2021

PROFESSIONAL MEDICAL CONSULTING ROOMS

- Available for Lease on a Sessional or Permanent basis for Medical Practitioners/Allied Health Providers.
- 3 x Fully Furnished premium office spaces, available individually or lease all 3.
- These professional offices are located in Tewantin within an existing thriving Diagnostic and Allied Health Business. Ground level with ample parking. Rooms equipped with a hand basin, telephone and internet connection; Spacious waiting room/ reception area.
- Access to staff amenities – toilets, kitchenette/microwave oven/ fridge. Admin support can be negotiated in the lease.
- Immediate start available for suitable applicant.

Please mail manage@dusktilldawnsleep.com.au to enquire or register your interest and arrange a viewing.

April 2021

CLASSIFIEDS:

Free to SCLMA members \$110 for non members.

Queries: Jo 0407 037 112

Email: Jo admin@sclma.com.au



The 2021 SCLMA Gala Celebration on Friday, October 29 was a huge success this year raising an incredible \$29,500 for Sunshine Coast charity Wishlist.

The funds have been directed to [Wishlist Centre](#) currently under construction opposite the Sunshine Coast University Hospital in Birtinya.

Wishlist Centre will be Australia's first facility to offer affordable patient accommodation, primary healthcare and complementary therapies under one roof.

This year's Gala Celebration at Lily's on the Lagoon, Novotel Twin Waters, was sponsored by Health & Co, The Radiology Clinic and Buderim Private Hospital, and supported by generous Corporate, Gold and Event Partners. Here's a few of the photos from the night.

To see all the photos from the night visit www.facebook.com/wishlistsc



End of year reminders!

NO January Newsletter

NO January Clinical Meeting

Next Newsletter February 2022

Deadline 15th February

Next Clinical Meeting 24 February 22

May the festive season be all you wish and need it to be! Thanks everyone!!

