

SCLMA President's Message

Dr Roger Faint



I am working in the single doctor town of Taroom for ten days currently. The appreciation by the community, change of pace and small hospital inpatient and emergency work reinvigorates me mentally enabling me to continue in my current GP role on the Sunshine Coast.

I organised a retrieval for an agitated fifty three year old female last night suffering a CVA. I am reminded that working in the bush, one obtains a respect for local nursing staff, the Queensland aero-medical retrieval system and the skills and advice provided by tertiary hospital emergency colleagues. Being in the bush reminds me of the presence of our high quality Australian medical system and the 'Mantle of Safety' it provides.

Locally on the Sunshine Coast there are ongoing issues, including:

- *the conflict between Federal and State Health system funding (necessitating our local public hospitals access to private health insurance (PHI) and Medicare)*
- *the lengthening of outpatient waiting lists as population pressures increase*
- *the resultant need of local public hospitals to access the QLD surgery connect program (thus less training access for hospital registrars)*
- *the lack of subspecialty services (although much improved)*
- *the increased ambulance ramping of patients in emergency departments*
- *the initial opening of the Griffith Medical School at SCUH in 2019*
- *ophthalmology public services are apparently improving*

These are of course only the main issues and the SCLMA will work with the harding working CE, SCHHS, Adj. Prof Naomi Dwyer, and her executive team for the benefit of our doctor members and their patients.

I remind members to send in examples of patient coercion to using their PHI when admitted to either

SCUH or Nambour. It is well known that the vast majority of private patients convert to using their PHI on admission, which is a testament to the advertising pull of a new hospital and its supportive administrative staff. Details will then be passed onto the Dr Dhupelia, President AMA Queensland.

The reinstatement of one orthopaedic registrar training place for 2019 has been a positive for the Sunshine Coast, however with access to the outsourcing program 'Surgery Connect' being necessary at the same time, let us hope training places are not affected again.

I thank the eminent Dr Russell Bourne for his hard work as SCUH Orthopaedic clinical director as he retired from this role recently.

Since the last meeting with CE, Naomi Dwyer, I personally have noticed a change in the SCHHS request for GP referrals. It seems that patients are now also requested to see their GPs for an ongoing referral as opposed to a request being simply sent to their GP. Thank you Naomi.

The SCLMA has been requested to investigate the possibility of a consultation only neurosurgical spinal service being provided as a VMO service at SCUH. The RBH Neurosurgical spinal service is ceasing soon (OPD appointments currently at least twelve months), I believe, and all GPs understand the challenges of obtaining a management opinion in relation to their patients significant back symptoms. I will write to Naomi for her thoughts.

Merry Christmas and see you in 2019

Dr Roger K Faint

**The SCLMA thanks
Sullivan Nicolaides
Pathology for the
distribution of the
monthly newsletter of
the Sunshine Coast
Local
Medical Association.**



**Sullivan
Nicolaides
PATHOLOGY**
Quality is in our DNA

CONTACTS:

President	Dr Roger Faint Ph: 5445 1046 (W) Ph: 0448 848 327
Vice President & AMAQ Councillor	Dr Wayne Herdy Ph: 54791 5666
Secretary:	Dr Mark de Wet Ph: 5444 7344
Treasurer:	Dr Peter Ruscoe
Newsletter Editor:	Dr Kirsten Hoyle Ph: 5452 6511
Meetings Convenor:	Dr Scott Masters Ph: 5491 1144
Hospital Liaison:	To be appointed
PHN Representative:	Dr Jon Harper
Committee:	Dr Mason Stevenson Dr John Evans Dr Tau Boga Dr Fabio Brecciaroli Dr Alicia Lorenz Dr Grant Eddie.
Junior Fellow:	Dr Jonathan Last

For general enquiries and all editorial or advertising contributions and costs, please contact:

Jo Bourke (Secretariat)

Ph: 5479 3979

Mob: 0407 037 112

Fax: 5479 3995

The Sunshine Coast Local Medical Association welcomes contributions from members, especially *'Letters to the Editor'*.

Please address all correspondence to:

SCLMA PO Box 549 Cotton Tree 4558

Email: jobo@squirrel.com.au

Fax: 5479 3995

Newsletter Editor: Dr Kirsten Hoyle

Email: kirsten@eximious.com.au

Disclaimer: The views expressed by the authors or articles in the newsletter of the Sunshine Coast Local Medical Association Inc. are not necessarily those of the Sunshine Coast Local Medical Association Inc. The Sunshine Coast Local Medical Association Inc. accepts no responsibility for errors, omissions or inaccuracies contained therein or for the consequences of any action taken by any person as a result of anything contained in this publication.



**FEBRUARY
NEWSLETTER
Deadline will
be FRIDAY 15
FEBRUARY
2019.**

DO YOU HAVE SOMETHING TO SAY?

- Perhaps you might like to comment on articles published.
- What would you like to see in the newsletter?
- Do you have some jokes we can publish (and not offend anyone!!).

Our circulation via email, post and courier (Sullivan Nicolaides Pathology) reaches more than 1,000 recipients!

Contact Jo: 5479 3979

Mobile: 0407 037 112

Email: jobo@squirrel.com.au

Fax: 5479 3995

We welcome new content - case studies, local news and photos. If you are a new member, send in a short bio and a photo to introduce yourself.

ARE YOU A MEMBER?

If you are not a member please complete the application form available on the website:

www.sclma.com.au.

You will need two proposers to sign your application form. If this is a problem, come along to a monthly clinical meeting to introduce yourself

Enquiries: Jo Ph: 5479 3979 or 0407 037 112

Email: jobo@squirrel.com.au

Are you listed on the Member Directory on our website? Are your details correct?

Directory form available on the website.



Editorial

It remains important to remember history rather than to efface it by the disowning of our stories, by changing the definition of words or by the furtive manipulation of precepts. Perhaps then we might become a more tolerant society.



The New Testament does not offer a date for Jesus's birthday. So in the lead up to Christmas in our pluralistic nation, the origin as to why it is celebrated on 25th of December may make interesting reading for some.

Saturnalia was a week long holiday ending on 25 December, celebrated by Roman pagans in honour of the Roman God Saturn. It was a time of lawlessness during which many Roman social norms were overturned and Roman courts were closed so that individuals could not be punished for crimes. Authorities chose "an enemy of the Roman people" and forced him or her to indulge in food and pleasures of the flesh before concluding the week by murdering the chosen one as a symbol of destroying the forces of darkness.

In the 4th century CE, Christian leaders hoped to convert the pagan masses and in their attempt to ensure continued observance of Christianity, they promised them they could continue to celebrate Saturnalia despite there being nothing intrinsically Christian about the holiday. In their endeavour to rectify the chasm, the Christians renamed the concluding day as Jesus's birthday but it did little to halt the widespread dissipation. Intemperance of food, intoxication, roaming from house to house singing naked (the precursor to modern day carol singing) and being generally licentious was how Christmas was celebrated during its formative years! Perhaps not the most felicitous or decorous fons et origo for a date to celebrate the birth of a Saviour! Because of its pagan origins, some Puritans have throughout history banned the celebration of Christmas - such as in Massachusetts between 1659 and 1681. Many other modern day Christmas customs - such as Christmas trees and gift giving - find their genesis in equally reprobate rituals.

So how will you celebrate this year's "festive" season? We are here to build a society that honours the freedom of others as well as our own and as Rabbi Sacks points out, "the battle for freedom is never finally won but must be fought in every generation". It is a befitting time of year mayhap to read the government's belated response to Philip Ruddock's Religious Freedom Review and the draft of its Religious Discrimination Bill. What will rise up in 2019 from the miasma that is current Australian politics and discourse?

Regards,

Kirsten

e.kirsten@eximious.com.au

HIGHLIGHTS in this issue:

- P 4: AMA Queensland Report
- P 7: Dr Wayne Herdy - "Christmas"
- P 8: GPLO Report - SCHHS
- P 10: PHN - Introducing Matthew Payne
- P 13: Poole Group - 'Christmas Bonus'
- P 15: Motoring - Dr Clive Fraser
- P 16: Travel - Ski Resorts Japan
- P 18: BHP - Women's Health Conference
- P 24: 'Smile Time'
- P 25: Membership Application Form

Please 'like', 'share' and 'follow' our Facebook page: [sunshinecoast local medical association](https://www.facebook.com/sunshinecoastlocalmedicalassociation).

Website: www.sclma.com.au

FIRST CLINICAL MEETING FOR 2019: THURSDAY 28 FEBRUARY 2019

Presenter: Prof. Ramesh Tripathi,
Vascular Surgeon
Topic: 'Current Advances in Vascular Surgery'
Sponsor: To be advised.
Venue: Maroochydore Surf Club

THURSDAY 28 MARCH 2019

Sunshine Coast Heart Specialists

Dr Peter Larsen, Dr Stuart Butterley, Dr K K Lim, Dr Naresh Dayananda, Dr Mark Johnson, Dr Tony Stanton
Sponsor: Pfizer
Venue: Maroochydore Surf Club

IMPORTANT NOTICE!

NO MEETING IN APRIL 2019 (Easter and Anzac Day holidays)

There will be TWO MEETINGS in MAY

THURSDAY 2nd MAY

THURSDAY 30th MAY.

Keep an eye on Meetings on our website: www.sclma.com.au



Doctors unite Queensland to urge State Government to save lives

In our ongoing efforts to support, promote and advocate for the medical profession in Queensland, AMA Queensland and the Colleges of General Practitioners, Psychiatrists and Ophthalmologists, and the Colleges of Rural and Remote Medicine, and College of Emergency Medicine Colleges progressed a joint statement on the new mandatory reporting legislation, urging the State Government to make improvements to the current Bill.

We released the joint statement on 5 December in the lead up to the Bill being debated in State Parliament early next year.

To reiterate our concerns and firm opposition to the current Bill, on the same day, Dilip and AMA Federal President Dr Tony Bartone appeared together before the Queensland Parliamentary Health Committee.

We hold serious concerns regarding the bill and its lack of any significant changes to Australia's mandatory reporting laws. The current laws are ambiguous and continue to discourage health practitioners from seeking treatment for a mental health condition. We have lost too many of our colleagues to mental illness in recent years. Governments must make it easier and more acceptable for health professionals to see a GP or Psychiatrist and get help for their own condition, without fear of reprisal.

The committee is due to deliver its report into the Bill on 4 February 2019.

We will keep members abreast of any updates on this issue.

It's that time of the year...

We wish to remind all members that your 2019 membership is now due. Your membership investment directly helps us to help you and your patients. Pay it forward and renew **online at www.amaq.com.au** or call the team on (07) 3872 2222 to place your renewal over the phone.

Happy Holidays from the AMA Queensland Team

Finally, we would like to wish you all a well-deserved break over the holiday season and a happy and safe Christmas with your family and friends. We look forward to sharing another busy and challenging year with you in 2019.

If you have any issues you feel need AMA Queensland's attention, please send us your thoughts directly via membership@amaq.com.au.

Dr Dilip Dhupelia, President AMA Queensland

Jane Schmitt, CEO AMA Queensland

88 L'Estrange Terrace, Kelvin Grove QLD 4059 • 07 3782 2222 • www.amaq.com.au

PELICAN WATERS MEDICAL CENTRE

FOR SALE / LEASE

- New complex to be built and delivered by late 2019* & adjoining new Town Centre which will accommodate 2,100* dwellings and 4,000* residents
- 1,235sqm* of space: Medical, Retail and Office (tenancy areas from 50 - 750sqm*)
- Adjacent to Pelican Waters Shopping Centre (Coles / Woolworths), new Marina precinct & proposed 60 apartment Retirement development
- Strong existing catchment - 53.4 % of the population is over 50 years of age (Qld Avg. is 33.5%)
- On site car parking for up to 53 cars with 2 street access
- Seeking Expressions of Interest from both operators and GPs

CONFIDENTIAL ENQUIRIES WELCOME

PETER WARD

0412 001 700

sales@wardcommercial.com

BRENDAN ROBINS

0402 159 588

brendan.robins@cbre.com.au

PELICAN WATERS
MEDICAL CENTRE

*approximately

Is your patient
**Sitting on an
 uncomfortable
 problem?**

Get world class
 prostate care at
 Buderim.

Appointments
07 5444 0672



A/Prof Troy Gianduzzo

Surgeon of Excellence in
 Robotic Surgery™



A/Prof Troy Gianduzzo is accredited as a Surgeon of Excellence in Robotic Surgery™ by the Surgical Review Corporation in conjunction with the Wesley Hospital's accreditation as a Centre of Excellence in Robotic Surgery™.



Dr Tony Gianduzzo

Prostate cancer diagnostics
 MRI/ Robotic-assisted biopsy

Dr. Tony Gianduzzo offers patients highly accurate prostate cancer diagnostics using the cutting-edge, Mona Lisa Robotic-assisted transperineal prostatic biopsy system after assessment by one of the leading and highest-volume prostate MRI groups in the world – Wesley/ Buderim Private Medical Imaging.



P 07 5444 0672 **F** 07 5444 0997
E info@buderimprostategclinic.com.au
A Suite 2, 5 Lyrebird Street,
 Buderim, Queensland, 4556.
W buderimprostategclinic.com.au

A/Prof Troy Gianduzzo is a Surgeon of Excellence in Robotic Surgery™ designee which he received with the Wesley Hospital's designation as a Centre of Excellence in Robotic Surgery™. 'COERS' and 'Centre of Excellence in Robotic Surgery' terms and seals are trademarks of Surgical Review Corporation. All rights reserved.

Dr Wayne Herdy - Christmas 2018



Christmas.

The second most important date on the Christian calendar.

For most citizens in a nominally Christian country, the religious character of the season is secondary, or even forgotten.

Most Australians recognize the name Kris Kringle, but how many know the names Melchior, Caspar and Balthazar? [OK, the pedantic Biblical scholar will remind us that the Bible does not name the three wise men, nor even specify that there were three Magi, this tradition being a late addition to the story. Only one apostle mentions kings from the East, without any names or numbers.]

Getting past the religious origin of the Christmas season, most will agree that this is a time of giving and receiving, a time of sharing, and especially of sharing with family.

Depending on whose statistics you like, there are probably 300,000 or more Australians for whom Christmas is not a time of sharing or a time of family. That is the estimate of the number of Australians who will spend all or most of the day alone. Loneliness is now actually recognized by the WHO as a medical condition in its own right, with a statistical mortality rate or at least a morbidity multiplier effect.

And the largest demographic sub-group is females in the 35-45 year age group.

Our communities boast small not-for-profit groups, supported by volunteers working almost in obscurity.

I visit two of them, and I know they will be putting on a Christmas lunch for the homeless. Each of them has distributed ten tonnes of food in the past year, yes 200kg of food per week, all of it donated.

Both of them also report a disturbing trend over the past few years, that they are increasingly seeing people who are not homeless but are struggling to keep food on the table in their rented homes and warm clothes on their backs in winter.

Even more disturbing is the trend away from the stereotype of the "homeless", who are less and less the young adult drug-affected and increasingly the late middle-aged and early-age geriatrics.

So I ask you, some time in the coming weeks, to spare a thought for the very significant number of your patients for whom Christmas is not a time of joy, family, gifts, and feasting.

Do you want to make a difference without any personal pain? Go to a place where the Lions are selling their cakes and puddings, buy a box of cakes, and ask them to deliver it to the local charity that supports the homeless. You might not know who they are, but the service clubs do.

To all my patient and loyal readers, I sincerely wish you and your loved ones a happy and shared festival season. Regardless of your religious views and allegiances, this is still a time when we can reflect on and cherish those values and experiences that Christmas has come to represent.



Your Sunshine Coast Local Medical Association has a social conscience.

We support the Shack, the Community Centre that cares for the homeless on the Sunny Coast. Based in an old squash courts near the Nambour railway station, it is a drop-in centre for the needy, offering meals, showers, laundry, and just good old companionship without the baggage.

This year, the SCLMA donated \$1,000 to the ongoing good work of the Shack.

Vice-President Wayne Herdy took the opportunity to hand our cheque to Pastor Dale in time for the Christmas season.

GP Liaison: Your Hospital Connection – December 2018



2018 has been an exciting year for the GPLO. Here is an update on our latest news.

GP with Special Interest Program

The GP with a Special Interest (GPSI) Program has been running for the past year in the Sunshine Coast Hospital and Health Service (SCHHS) with GPSIs working across 12 specialities. There are currently vacancies in the speciality areas of Urology, Neurology and Persistent Pain. If you are a GP and interested in these positions or would like further information, please contact the GP Liaison Unit.

Opening of the Sunshine Coast University Hospital Plastic and Reconstructive Service

The Plastic and Reconstructive Service at the Sunshine Coast University Hospital opened in October 2018. Services available include:

Adult Service

- Emergency and elective surgery services including:
- Lower limb Reconstructive Surgery
- Breast Reconstruction
- Removal and Reconstruction of complex skin cancer
- Head and Neck reconstruction
- Complex wound reconstruction including major tumour and trauma
- Outpatient clinics, including rapid Access Plastics Intervention Day Clinics
- Inpatient consultation liaison.

Children's Service

- Emergency patients will be treated in partnership with the Child and Adolescent Service within the Women's and Families Service Group.
- Complex/Tertiary Children will be treated at Lady Cilento Children's Hospital.

Dermatology Service

Dermatology at SCUH has lost a valued staff member and our thoughts are with his family. Dr Daniel Gaffney passed away on 6/11/2018 and will be missed by all of the team at SCUH Dermatology. The dermatology service will be limited and longer than usual wait times will apply until staffing levels can be increased. Please check HealthPathways skin lesions page and non-acute dermatology assessment page for a list of GPs with an interest in skin cancer surgery. Please also consider alternative referral paths for skin conditions. If you need further assistance our GPLOs Dr Michelle Johnston/Dr Edwin Kruys can be contacted on **5202 3822**.



Sunshine Coast Hospital and Health Service

Exceptional people. Exceptional healthcare.



Contact the GP Liaison Unit

Dr Michelle Johnston (GPLO)
 Dr Marlene Pearce (GPLO)
 Dr Edwin Kruys (GPLO)
 Merrin Godwin (Clinical Nurse)
 Peta-Maree Willett (Project Officer)
 Sue Hawkins (Administration)

Email SCHHS-GPLO@health.qld.gov.au
 Phone 07 5202 3822
 Mobile 0439 591 731
 Fax 07 5202 1044

Sunshine Coast University Hospital
 6 Doherty Street Birtinya 4560
 PO Box 5340 Sunshine Coast MC 4560

Senior Medical Officer

Sunshine Coast, QLD

Eden
Private Hospital
healthcare™

A position of Senior Medical Officer is currently available at Eden Private Hospital, located Noosa Hinterland, Sunshine Coast, Queensland.

The hours and working days of the week are negotiable with the successful applicant.

The position is responsible for sub acute medical and rehabilitation admissions and the safe delivery of medical services for patients admitted to Eden Private Hospital for a range of medical conditions.

The position is supported by a team of rehab physicians, SMO and full time Rehab registrar position, Nurse Unit Manager, 24 hour nursing team and allied health team. Clinical services delivered are within a multidisciplinary framework and an interdisciplinary team approach.

The clinical inpatient programs meet the needs of the following patient groups (but not limited to) cardiac, orthopaedic, neurological, reconditioning, sub acute medical, palliative and pain management.

Mandatory

- Full registration with AHPRA
- Senior experience in sub acute medical and rehabilitation inpatient services
- Holder of a Medicare Provider Number or eligible to apply

Desirable

- Experience in palliative care is desirable
- An interest to work in the private health sector

Experienced Senior Medical Officers with relevant qualifications and experiences are invited to apply by sending their applications to:

Ms Jo Munday, CEO/DON Eden Private Hospital at jo.munday@healthcare.com.au by COB 28th December 2018.

For general enquiries please call **Jo Munday on 0407 388 760**

edenprivate.com.au



DR TIM NATHAN

MB ChB (Edin), FRCS (Eng), FRCS (Urol), FRACS (Urol)

Suite 6
Buderim Private Hospital
12 Elsa Wilson Drive
Buderim
Ph: 07 5478 1652
Fx: 07 5478 4958
www.drtrimnathan-urology.com.au

Specialising in:

- Mona Lisa Robotic Transperineal Prostate Biopsy
- Da Vinci Robotic Prostatectomy & Renal Surgery
- BPH - Laser Prostatectomy & Urolift
- Stone Disease
- Penile Prosthesis Surgery
- Vasectomy Reversal
- Urodynamic Studies

Robotic Prostate Biopsy

Safe & accurate diagnosis of clinically significant prostate cancer

Tim graduated from the University of Edinburgh and completed advanced training in urology at teaching hospitals in London and Queensland. He has trained extensively in da Vinci Robotic Surgery at the University Hospital, Leipzig, and the Wesley Hospital.

Tim successfully introduced da Vinci Robotic Surgery to Buderim Private Hospital. He has been practising on the Sunshine Coast since 2006.

Introducing the PHN's new Senior Manager for Health System Improvement, Matthew Payne

by Acting CEO, Emma Whitehead



Matthew Payne has recently been appointed as the Senior Manager for Health Systems Improvement for the Central Queensland, Wide Bay, Sunshine Coast PHN. Matt is passionate about improving the health outcomes of those living within our community.

As a qualified Registered Nurse, he has worked for many years within clinical settings in large metropolitan hospitals, adult education and health care management. His employment history also includes regional coordination of a national contract that delivered primary healthcare services to all members of the Australian Defence Force requiring on-base health support and most recently, as regional manager for a private company that delivered a diverse range of mental health services across Central Queensland, Wide Bay and the Sunshine Coast.

The PHN is pleased to welcome Matt to the team, and we look forward to working with him to continue to support general practices throughout the region.

Matthew Payne

I consider myself extremely fortunate to have been given the opportunity to lead the Health Systems Improvement team for our PHN. This team has achieved significant success in 2018 by working in collaboration with general practices to promote national and regional reform initiatives, utilise available data analytics to improve performance, and optimise health outcomes through the provision of meaningful education and training.

The ongoing commitment of the HSI team is also evident in the following achievements for 2018:

- The birth of an Integrated Care Strategy with the Sunshine Coast Hospital and Health Service;
- Over 470 condition-specific HealthPathways for use in referral and clinical decision support, thanks largely to the valued contribution of SCHHS Specialists, GP Liaison Officers and local GPs clinical editors;
- 75% of pharmacies now registered for My Health Record – now moving into Allied Health and specialists;
- Large scale advertising campaign promoting appropriate use of Emergency Department <http://www.rightplacerrighttime.com.au/>;
- 102 face to face professional development events supported;
- Establishment of a mental health screening program, using tablet technology and secure messaging in participating general practices, in partnership with Black Dog Institute;
- Seven GP-led network meetings supported (over 80 attendees) with topics ranging from medicinal cannabis to lung nodules;
- Over 20,000 consumers reached with My Health Record information.

2019 promises to be an even more exciting year with the following initiatives emerging as significant areas of focus:

- Partnering with the SCHHS to implement the GP Smartreferrals roll out;
- Supporting general practice through the introduction of the QIPIP;
- Supporting the meaningful use of My Health Record in primary care.

I look forward to working with GPs across the region, and I encourage you to contact me if you would like to discuss your role in improving the health system on the Sunshine Coast.



Local care.
Global expertise.

We've got your back

Specialist neurosurgeons caring for the Sunshine Coast community



24/7 ON CALL
CARE FOR
URGENT CASES



LOCAL EXPERTS.
NO NEED TO
TRAVEL



3 NEUROSURGEONS

Dr Janusz Bonkowski | Dr Michael Bryant | Dr Stephen Byrne



5493 5100



5493 6100



WWW.SCBRAINANDSPINE.COM.AU

Consulting at Birtinya, Buderim, Noosa and Gympie



SUNSHINE COAST
RADIOLOGY

Excellence in Diagnostics

From the Radiologists and Staff of Sunshine Coast Radiology, we would like to thank our referrers and patients for their continued support throughout the year in 2018. We wish you and your family a Merry Christmas and a safe and Happy New Year.

scradiology.com.au | info@scradiology.com.au

Happy Holidays!

From the team at **SPORTS & SPINAL PHYSIOTHERAPY**

The holiday season is a wonderful time for us to remember the friends & medical community who help our business and make our jobs a pleasure all year long, Sports & Spinal would not be possible without your support.

We would like to take this moment to say thank you and send our best wishes to you and your families. May the New Year be filled with success and happiness!

We look forward to continuing to provide you and your patients with the very best evidence based treatments and rehabilitation in 2019.



DON'T LET PAIN INTERFERE WITH YOUR LIFE...



sports&spinal™

sportsandspinalphysio.com.au

SUNSHINE COAST
HEART
SPECIALISTS
your local heart team



Your LOCAL Heart Team Comprehensive Sub Specialty Practice

DOES ASPIRIN STILL HAVE A ROLE IN PRIMARY PREVENTION?

We have had robust and supportive data for decades that aspirin prevents recurrent cardiac events and mixed data (from systematic reviews) indicating possible benefit for aspirin in primary prevention as well. That is, until three aspirin trials published this year.

The ASCEND trial looked at 15,000 patients with diabetes taking aspirin and found that while there was a modest reduction in cardiovascular events the fairly large increase in the risk of major haemorrhage essentially negated this.

Then the ARRIVE study randomised 13,000 patients with moderate cardiovascular risk to aspirin or placebo. Aspirin had no effect on all cause death or reduction in cardiovascular outcomes.

Last to report was ASPREE which is probably the most damning of the three for aspirin. ASPREE enrolled 20,000 patients in the USA and Australia, over the age of 70 who were felt to be at higher risk of cardiovascular disease and death. The primary outcome was a combination of death, disability and dementia (accounting for the

fact that as we age, survival is not the only thing that is important to us). Aspirin had no effect on the primary outcome and in fact looking at all cause mortality the rate was higher in the aspirin group compared to placebo! (due to higher rates of cancer diagnosis and death in the aspirin group – although aspirin was unlikely causative, the rates were very small and in the end, we all have to die of something and many other studies contradict this finding suggesting aspirin may be cancer protective).

Therefore what we are left with are three trials that show that in multiple populations of moderate cardiovascular risk, aspirin has no real role to play in the primary prevention of heart disease.

So what happened to aspirin the wonder drug? Well, it was a wonder drug, but in reality we are now much better at preventing heart disease than we have been in the past – particularly diabetes management and proactive treatment of dyslipidaemia and hypertension. We are doing a better job at reducing risk than ever before and these days aspirin in the primary prevention population just doesn't really add anything extra.

PHONE: 5414 1100 FAX: 5414 1101 admin@scheart.com.au www.scheart.com.au

BIRTINYA

Suite 4 Ground Floor
Sunshine Coast University Private
Hospital, 3 Doherty Street
Birtinya QLD 4575

BUDERIM

Suite 9 Medical Centre
Buderim Private Hospital,
12 Elsa Wilson Dr
Buderim QLD 4556

TEWANTIN

Suite 1, 66 Poinciana Ave
Tewantin QLD 4565

GYMPIE

Ramsay Medical Consulting Suites
70-72 Channon Street
Gympie QLD 4570

Merry Christmas – Staff Bonuses



If you are considering paying your staff a bonus before Christmas keep in mind tax on the bonus will need to be calculated manually. If you allow your software to calculate the tax it won't be able to differentiate between a bonus and weekly wage, hence the need to calculate manually.

Below is a worked example:

Employee usual earnings are \$1230 per week, tax withheld is \$263.

(Assumptions - TFN yes, Resident yes, Tax free threshold Yes, Help No, SFSS No, \$0 Tax offsets, paying full medicare with no spouse, no children)

This is calculated using the ATO Tax Withheld for Individuals.

<https://www.ato.gov.au/Calculators-and-tools/Host/?anchor=TWC&anchor=TWC/questions#TWC/questions>

You decide to pay your employee \$2000 bonus. To calculate the tax:

Divided \$2000 by 52 weeks as wages are paid weekly = \$38.46.

Add \$38.46 to weekly earnings and recalculate the Tax.

New weekly wage is \$1268 (\$1230+\$38) and tax using the ATO Tax Withheld Calculator is \$276.

Take the increased tax of \$276 and withdraw the normal weekly tax of \$263 = \$13.

The tax to withhold from \$2000 bonus is (\$13x52weeks) or \$676.

The net payment to your employee is \$1324.

Please note a Christmas bonus falls under the definition of Ordinary Times Earnings so you will need to pay 9.5% Superannuation Guarantee on any bonus you pay. Please factor this in to your calculations.

If you have any questions please give our office a call. **Ph: 07 5437 9900**

Merry Christmas & Happy New Year

Kerri Welsh





Sunshine Coast Orthopaedic Clinic

The Acute Knee Clinic

The first few days can make all the difference in recovery from a sporting injury.

Dr Steve Lawrie at the Sunshine Coast Orthopaedic Clinic provides an Acute Knee Clinic each Monday and Tuesday which is specifically designed for, but not limited to, sports injuries of the knee with a view to rapid assessment, investigation and adoption of a management plan within the first few days of the initial injury.

The Acute Knee Clinic has now been running for twelve years. We have treated many professional and semi-professional athletes as well as the "weekend warriors", including a special interest in paediatric sporting injuries. Dr Lawrie has a close association with many sporting teams on the Sunshine Coast, including the Sunshine Coast Falcons, Melbourne Storm and many other local clubs.

Specific conditions that can benefit from emergent assessment include suspected ligamentous injuries, including cruciate ligaments, medial ligaments, multiple ligament injuries, acute patellar dislocation, locked knees and especially paediatric cruciate and meniscal injuries whether that be by implementing early surgical techniques

or an appropriate non-operative treatment programme.

To access the Acute Knee Clinic, a patient needs to have a current referral to Dr Steven Lawrie and plain x-rays of the knee should also be arranged before the initial consultation.

A plain x-ray is very important in the initial assessment to exclude fractures, loose bodies, and to show the alignment of the knee joint and the patellofemoral joint, which cannot be seen on other investigations, such as an MRI scan.

Splints and orthotics can be organized directly with Leonie Walton on 5473 5858. Leonie attends our clinic on a Thursday afternoon, but she is available throughout the week as needed.

The Acute Knee Clinic is intended to complement Dr Lawrie's other interests, including hip and knee replacement, revision arthroplasty, computer assisted joint replacement, cartilage surgery, as well as hip, knee and ankle arthroscopy.

Dr Lawrie is happy to take phone calls for advice, queries etc as this often helps the referral process.

For appointments contact

Dr Steven Lawrie
Suite 17, Kawana Private Hospital
5 Innovation Parkway, Birtinya QLD 4575
p: 07 5493 3994
f: 07 5493 3897
e: sunshineortho@bigpond.com.au
www.sunshineortho.com.au

Examples of these injuries include:

A medial ligament injury is usually easily treated in a range of motion brace, using an MCL protocol if applied with the 1st week or so. But it can be extremely difficult to correct if there is a delay of a number of weeks.

Paediatric meniscal tears may be repairable early after an injury, but a delay typically means meniscal resection becomes necessary.

Acute patellar dislocation may respond to surgical repair if surgery is offered in the first 2 weeks after the injury.

Traumatic meniscal tears where early repair rather than delayed resection can make a dramatic difference in outcomes

Early ACL surgery in the young active patient/sportsman.

Designing care a better way

Focused on the individual, not the condition

Radiation oncology relocating to Buderim in 2019

GenesisCare, Sunshine Coast Haematology and Oncology Clinic and associated allied health services have united to create a true integrated cancer treatment centre, purpose built to provide the gold-standard in cancer diagnosis, treatment and management.

The same radiation oncologists you know and trust, providing high quality, personalised care.



Dr Debra Furniss
MBChB, MRCP (UK), FRCR (UK),
MSc (oncology), FRANZCR



Dr Olivia Bigault
BAppSciOptom (Hons), BMedSci,
MBBS (Hons), FRANZCR



Dr James MacKean
MBBS, FRANZCR

Our services will include:

Stereotactic radiation therapy

Deep inspiration breath hold (DIBH)

Leading radiation therapy techniques including VMAT and IGRT

Treatment for benign conditions including Dupuytren's disease

Patient bus service: We will continue to provide transport for patients

Get in touch:

T: (07) 5345 8900 | F: (07) 5441 3511 | receptiononcologynambour@genesiscare.com



Medical Motoring

Taking a gamble on TheLott.



After protesting recently about MHR (My Health Record) and all of the possibilities of my privacy being breached I thought that I would let my colleagues know that I have just celebrated a sentinel birthday which for the purposes of this column I'll call my 40th.

There was a week-long celebration with all manner of food and beverages, culminating in the ritual of gift giving.

After a lifetime of consumerism I think that I can reliably claim to have at least one of everything, so what birthday gift would you buy a man who has it all?

With \$100 million dollars on offer in a mid-week Gold Lotto draw I'd say that you'd probably buy a ticket in that, just for fun.

After all if I won I could help myself to another LCD screen or gadget of my choosing to fill a house that is already bulging with "stuff".

But with only a one in seven million chance of winning I regret to say that I usually never check my numbers with any of these gifts.

After an anxious phone call from the generous donor I thought that I had better check to see whether I had won the grand prize.

Too inconvenienced to go to a shrinking number of news agencies I thought that I'd check my numbers on-line.

I downloaded TheLott app and as per the instructions I took a photo of the ticket.

But the response was, "Sorry, your request cannot be serviced at present #1008".

No luck there.

My next step was to create a log-in at www.thelott.com.

The site required my full name, title, date of birth, phone number and full residential address.

Greedily, I willingly provided all of this information.

After all I had a one in seven million chance of taking out the jackpot, retiring, philanthropy and all that stuff.

But then I was hit with the startling reality that at those odds I was more likely to be killed by my Takata airbag and that I had just given all of my identifying information to the Tatts Group.

There weren't even any frequent flyer points on offer for handing over my personal data.

Tatts Group is after all a benevolent company which has a monopoly on lotteries and a big stake in wagering and gaming solutions (aka pokies) in Australia.

Surely they didn't employ any stalkers or terrorists and I'd be safe in my abode.

In terms of data security I thought that Tatts Group would have to be safer than giving my personal information to a Commonwealth Government whose ministers regularly guarantee that they support their leader.

So what does this story have to do with motoring?

I'd say nothing at all.

That is apart from when you are driving in your car I'd recommend keeping your windows wound up and your doors locked whilst abstaining from handing out your personal identifying data.

Oh, and don't forget to get your faulty Takata airbag replaced.

After all. Life is a gamble.



Safe motoring,

Doctor Clive Fraser

Gamblers Help 1800 858 858

Ski Resorts in 'Snow Japan'

A unique country with a distinct culture, Japan is a world-class skiing destination with over 500 ski resorts spread across the cluster of islands from north to south. If you are not up for skiing or snowboarding, head to the snow play areas offered by most resorts for sledding, snow tubing, and snowmobile biking. For a relaxing day, hit one of Japan's therapeutic *Onsen* (hot spring) for rejuvenation of the body, mind, and soul:



Play with snow to your heart's content

1. **Snow Country:** Trekking through snow at Daigenta in the Niigata Prefecture, pit stop for crispy tempura and Soba noodles, partaking in their joyful festivities, finest skiing opportunities, visit to the magical "kamakura"—Snow Country igloo, and plenty of exploration opportunities are what makes the mountains of the Snow Country area so memorable.
2. **Naeba:** One of the renowned ski resorts in Japan, Naeba offers illuminated night skiing. Besides, you can enjoy a 20-minute Dragondola ride to experience the postcard-perfect winter scenery of the area, indoor and outdoor ski programs for children, and Wakuwaku Snow Land with snow train rides, snow rafting and much more.
3. **Zao Onsen:** Apart from being famous for the best skiing conditions, Zao Onsen ski resort is also visited in hordes for its stunning natural Juhyo "Ice Monsters". The resort village's famous hot springs, snow courses, exciting Family Snow Park, Snowboard Park, besides inexplicable scenery are other attractions.
4. **Sapporo:** Great skiing, ice sculpture spectacle at the annual Snow Festival and plenty of other snow sports and activities are what makes Sapporo ski resort a hit among tourists.
5. **Hakuba:** Located a convenient *Shinkansen* (bullet train) ride from Tokyo city, the Hakuba Valley—with 10 ski resorts and over 200 runs—is the heart and soul of snow sports in Japan. This valley is well-known for its spectacular scenic beauty, and perfect consistent snowfall which is ideal for great skiing and boarding.
6. **Nozawa Onsen:** This traditional Japanese ski resort village is popular for great ski fields, and Onsen (hot spring). One of the three major fire festivals of Japan which is held in Nozawa Onsen is definitely worth attending.

What have we planned for you?

A comprehensive itinerary has been developed to include all the skiing and après-skiing attractions of Japan.

- An overnight stay at the Naeba ski and snowboarding resort for night floodlit skiing, snowboarding, snow tubing, snow train rides, Dragondola-rides among plenty of other options
- Root for the daredevils at the 2016 Alpine Skiing World Cup to be held in Naeba in February.
- Trip to Nozawa Onsen with plenty of opportunities for skiing, and recreation by the famous onsens (hot springs) of the region
- Shiga Kogen is the go-to place for skiing, visiting some popular temples, and witnessing the breathtaking sight of spectacular snow monkeys by the hot onsens in the nearby forest.
- Don't miss the traditional Sapporo Snow Festival in Sapporo—located on Hokkaido Island—in February
- Stay at Niseko—the ski resort on Hokkaido Island—for the best skiing, and lively après parties



www.123Travelconferences.com.au



Dr. Gus Ferguson *and* Dr. Sally Johnstone

are now operating at X-Ray & Imaging Minyama.

Procedures offered

RADIOFREQUENCY NEUROTOMY for

- ✓ Spinal Facet-Related Pain Relief
- ✓ Cervicogenic Headaches
- ✓ Occipital Neuralgia
- ✓ Sacroiliac Joints
- ✓ Amputee "stump" neuromas
- ✓ Morton's Neuroma

Also available

- ✓ Nerve Root Sleeve Blocks
- ✓ Intercostal Nerve Blocks
- ✓ Cluneal Nerve Blocks/Ablation
- ✓ Facet Joint Injections
- ✓ Costo-vertebral Blocks

Please send referrals to:

Email: painclinic@xrayimaging.com.au

Fax: (07) 5458 4499 Phone: (07) 5458 4444

Address: 3/7 Nicklin Way, Minyama QLD 4575



BUDERIM PRIVATE HOSPITAL

2019 WOMEN'S HEALTH CONFERENCE



**BOOK
NOW**

Saturday 2 March 2019

8am – 4.30pm

Mantra Moololaba, Venning St, Mooloolaba

Get the latest updates on women's health from your local specialists

Program

Radiation Therapy in the management of breast cancers	Dr Marcel Knesl Radiation Oncologist
Vascular disease and women - how gender difference influences clinical outcomes after vascular surgery	Dr Ramesh Tripathi Vascular Surgeon
Update in cardiology focussing on heart failure and cryptogenic stroke	Dr Alana Harris Cardiologist
Mesh free prolapse surgery	Dr Peta Higgs Urogynaecologist
No mesh, no fuss incontinence surgery	Dr James Orford Gynaecologist and Obstetrician
The non-operative management of osteoarthritis of the knee – current concepts	Mr James Tunggal Orthopaedic Surgeon
Not all LUTS are UTIs	Dr Kirsten Hoyle Urologist
Minimally invasive spine surgery - small scars/big results	Dr Greg Finch Orthopaedic and Spinal Surgeon

Online registrations can be completed by visiting
buderimprivatehospital.com.au/gpeducation

Proudly part of



What's happening in 2019?

- No January newsletter
- No January clinical meeting.
- First newsletter - February - deadline 15 Feb 2019
- First clinical meeting - Thurs 28 Feb - Prof Ramesh Tripathi, Vascular Surgeon - 'Current Advances in Vascular Surgery'

How do you receive your newsletter?

Email is so much faster - change anytime and save us postage. Contact Jo: jobo@squirrel.com.au



Have you checked out our website recently?

Regular updates on current matters

Just click on Latest News

Missed a newsletter?

**All newsletters are posted on website
Full size and easy to read
www.sclma.com.au**

First on Sunshine Coast to offer Stereotactic radiation therapy

- The most advanced radiation treatment for metastatic tumours
- Delivers pinpoint accuracy and targets numerous, well-defined tumours
- Used to treat a number of sites including brain, lung and metastatic tumours

Dr Colin Dicks
Lung, skin, breast, prostate cancers. Palliative care, psychosocial oncology issues and stereotactic radiation therapy

Dr Marcel Knesl
Breast, gastrointestinal, genitourinary cancers, lymphoma and stereotactic radiation therapy

Dr Myo Min
Head and neck, gastrointestinal, lung, skin cancers and stereotactic radiation therapy

Dr Dinesh Vignarajah
Gynaecological, genitourinary, CNS, haematological malignancies and stereotactic radiation therapy

We accept referrals from GPs and specialists for all cancer types. Please send your referral via Medical Objects or Fax.

60 Wises Road, Maroochydore
P 07 5414 3700 | F 07 5414 3701
admin.maroochydore@roc.team

radiationoncologycentres.com.au

Move without pain™

We use new patented evidence-based Orthotic Technology!

Guaranteed Outcomes

- Evidence-based research in Biomechanics and Kinetic Orthotic therapy.
- Leading therapeutic technology including:
 1. Shock Wave therapy Machines, excellent for treating chronic plantar fasciitis and Achilles tendonitis.
 2. New Photodynamic Fungal Nail Therapy Unit, highly effective and significantly safer than existing laser for this treatment.
- Passionate and experienced Team committed to delivering the best possible treatment for our patients on the Sunshine Coast and in Brisbane.

Locations

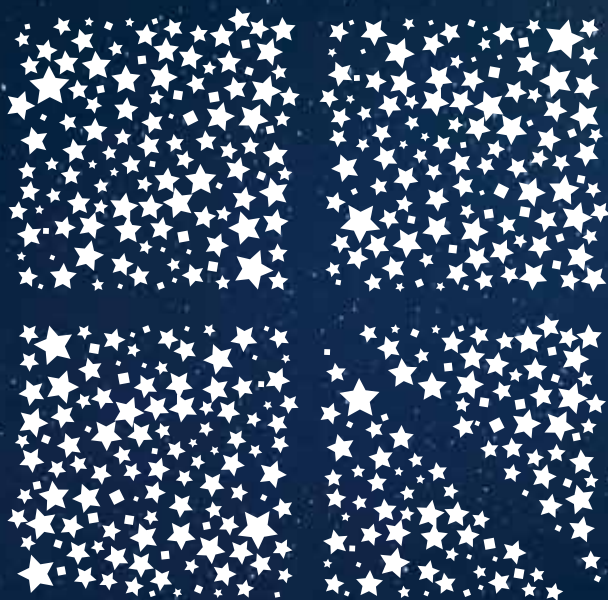
Maroochydore, Noosa, Nambour, Caloundra, Morayfield and Indooroopilly with satellite practices at Mapleton and Kenilworth.

All EPC patients Bulk Billed



Phone: 1300 130 410
www.daneverson.com.au





SEASON'S GREETINGS

**We thank you for your support
this year and look forward
to working with you in 2019.**



**Caloundra
Private Clinic**
Part of Ramsay Health Care



**Nambour Selangor
Private Hospital**
Part of Ramsay Health Care



**Noosa
Hospital**
Part of Ramsay Health Care



**Sunshine Coast University
Private Hospital**
Part of Ramsay Health Care

MEDICAL SUITE - AVAILABLE NOW**6 WEEKS RENT FREE!****As new fit-out, ready to walk straight in!****CONTACT****Melissa Burton****PH: 0429 068 798****melissak@fortushealth.com.au****Will consider selling!**

- **Area = 87 (sq m)**
- **Ground floor**
- **2 parking spaces**
- **2 consulting rooms**
- **Reception + waiting room**
- **Kitchen**
- **Long term lease available**

**NOW OPEN
24/7****FAST, QUALITY EMERGENCY
CARE FROM THE HEART**

- Open 24/7 with minimal wait times
- All patients treated, except for major trauma cases
- Private health members can be admitted directly to the hospital and access its leading specialists

Visit buderimprivatehospital.com.au/emergency

**Buderim Private
Hospital**
EMERGENCY

GP Education

GP Updates

in Urology and PAD

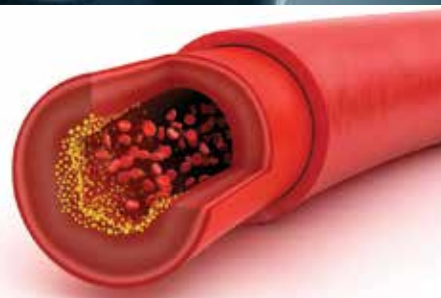
Sunshine Coast University Private Hospital is very pleased to invite you to an education evening featuring Urologist **Dr Stuart Collins** and Vascular Surgeon **Dr Pankaj Jha**. Please join us for a night of interactive discussion.



LEARNING OUTCOMES

Attendees will be able to:

- Implement a care plan for the age appropriate management of lower urinary dysfunction
- Explain the pathophysiology of stone formation
- Describe the role of antiplatelet and anticoagulation medication in PAD
- Identify peripheral arterial lesion levels and need for intervention



PROGRAM

- 6.00pm Registration and dinner
- 6.30pm Presentations and rotating discussion groups
- Short topics urology - renal stones and lower urinary tract dysfunction** Dr Stuart Collins, *Urologist*
- Recent advances in management of peripheral arterial disease** Dr Pankaj Jha, *Vascular Surgeon*
- 9.00pm Evaluation and close

WHEN

Wednesday, 27 February 2019

WHERE

Best Western Plus
Lake Kawana Hotel
8 Florey Boulevard
Birtinya QLD 4575

REGISTER BY

Thursday, 21 February 2019



It's easy to register

Online <http://www.sunshinecoastuniversityprivate.com.au/For-Doctors/GP-Education>

Email GPEducation.SC@Ramsayhealth.com.au

Call Pam Bull for any enquiries on 0427 327 321

Email if you wish to be removed from our mailing list



**Sunshine Coast University
Private Hospital**

Part of Ramsay Health Care



EDINBURGH SCOTLAND

AMA QUEENSLAND ANNUAL CONFERENCE

SUN 22 - SAT 28 SEPTEMBER 2019

Doctors, practice managers, registered nurses and other medical industry professionals from around Australia are invited to attend the **Annual AMA Queensland Conference in Edinburgh, Scotland from 22-28 September 2019.**

The program will feature high-profile British, Scottish and Australian speakers on a range of medical leadership and clinical topics in an exciting, and unique location. RACGP points will be on offer.

To find out more about the conference program or to register, please contact:

Neil Mackintosh,
Conference Organiser
P: (07) 3872 2222 or
E: n.mackintosh@amaq.com.au

Download a
conference brochure
from the
events calendar at
www.amaq.com.au

REDCLIFFE LOCAL MEDICAL ASSOCIATION NEWSLETTER

Redcliffe LMA produces a similar newsletter

For full details re advertising go to their website:

www.rdma.org.au

Email: RDMAnews@gmail.com

ADVERTISING GUIDELINES:

To comply with Section 133 of the National Law and guidelines, advertising of services must not:

Paragraph (a) "Create or be likely to create unwarranted and unrealistic expectations about the effectiveness of the health services advertised"

Paragraph (f) "Claim that the services provided by a particular regulated health profession are better, as safe as or safer than others"

Paragraph (o) "Contain any claim, statement or implication that a practitioner provides superior services to those provided by other registered health practitioners"

PLEASE NOTE THE FOLLOWING:

The anti discrimination commission of Queensland has the following statement on job advertising:

Discriminatory advertising is against the law. Job advertisements need to give the impression that all suitable applicants are welcome to apply. References to sex, relationship status, age, race, religion etc should be avoided, as should the use of words that may indicate a preference for particular groups or may discourage others from applying, eg foreman, tradesman, glamorous, well-built, mature, youthful, office girl etc. Publishers can be fined and be the subject of a complaint to the Commission for publishing discriminatory advertisements that show an intention to contravene the Anti-Discrimination Act 1991. Discriminatory advertisements will therefore often be refused or modified by publishers in order to avoid legal liability.



Take a moment

Mistletoe is a plant that grows on range of trees including willow, apple and oak trees. The tradition of hanging it in the house goes back to the times of the ancient Druids. It is supposed to possess mystical powers which bring good luck to the household and wards off evil spirits.

Yarn of the Seat in Stand

Freddie and John were fortunate enough to have a season ticket to watch Chelsea. They could not help noticing that there was always a spare seat next (B14) to them and they had a friend who would love to buy a season ticket, especially if all three could have seats together.

One half-time Freddie went to the ticket office and asked if they could by buy the season ticket for B14. The official said that unfortunately the ticket had been sold. Nevertheless, week after week the seat was still empty.

Then on Boxing day, much to Freddie and Eddie's amazement the seat was taken for the first time that season. John could not resist asking the newcomer, 'Where have you been all season'. Don't ask he said, the wife bought the season ticket back last summer, and kept it for a surprise Christmas present.

Christmas Turkey

It was Christmas Eve in at the meat counter and a woman was anxiously picking over the last few remaining turkeys in the hope of finding a large one. In desperation she called over a shop assistant and said, 'Excuse me. Do these turkeys get any bigger?' 'No, madam, 'he replied, 'they're all dead

Mirror Image - Christmas Fable

On Christmas Eve, Nathan thought it would be nice to buy his wife a little gift for the next day. Always short of money, he thought long and hard about what that present might be' Unable to decide, Nathan entered Debenhams and in the cosmetics section he asked the girl, 'How about some perfume?' She showed him a bottle costing £75. [\$150USD] 'Too expensive,' muttered Nathan. The young lady returned with a smaller bottle for £50. 'Oh dear,' Nathan groused, 'still far too much.' Growing rather annoyed at Nathan's meanness, the sales girl brought out a tiny £10 bottle and offered it to him. Nathan became really agitated, 'What I mean', he whined, 'is I'd like to see something really cheap.'

So the sales girl handed him a mirror



Maroochydoore Surf Club is offering FREE Membership to SCLMA members! This entitles members to a number of discounts and information re coming events and promotions. Go to reception any time, mention you are SCLMA and eligible for free membership and complete an application.

Those who completed a form at the March meeting have already had their Maroochy Surf Club membership cards mailed to them.



Your pathology provider on the Sunshine Coast

Results (24 hours)

P: 1300 778 555

Added tests

P: (07) 3377 8528

Sonic Dx / IT Support

P: 1800 100 769

Doctor Stores Request

F: (07) 5459 1440

Faxed Pathology Request Forms

F: (07) 5459 1440

www.snp.com.au

Local Laboratories

Birtinya P: (07) 5459 1400

Kawana P: (07) 5459 1433

SUNSHINE COAST LOCAL MEDICAL ASSOCIATION Inc. ABN: 56 932 130 084

MEMBERSHIP APPLICATION

Enquiries: Jo Bourke Ph: 5479 3979 Mb: 0407 037 112 Email: jobo@squirrel.com.au

NAME	Surname:		First Name:	
EMAIL: _____				
<i>THE SCLMA PREFERS TO CONTACT MEMBERS VIA EMAIL WHEREVER POSSIBLE.</i>				
PRACTICE ADDRESS: For members who wish to receive hard copies (instead of by email) of the monthly invitation & newsletter by Sullivan Nicolaides Pathology Couriers to avoid postage costs.				
	Practice/Building			
	Street:			
	Suburb:		Postcode:	
	Phone:		Mobile:	
PRACTITIONER DETAILS:				
	Qualifications:			
	Date of Birth:		Year of Graduation:	
	Hospital employed / Private Practice (cross out one)			
	General Practice / Specialist (cross out one)			
	Area of Speciality:			
PLEASE NOTE: <i>Retired doctors who wish to join the Association are required to attach a letter of good standing from their respective College.</i>				
PROPOSERS: (to comply with the Queensland Associations Incorporation Act, two financial members of the Association are required to nominate each applicant for <i>new</i> membership. Members <i>renewing</i> their membership do not need proposers).				
1. NAME:			Signature:	
2. NAME:			Signature:	
ANNUAL SUBSCRIPTION (GST included):		(Please tick)		PLEASE COMPLETE:
Full-time ordinary members - GP and Specialist		\$ 110		Your Monthly Invitation?
Doctor spouse of full-time ordinary member		\$ 55		By Email?
Absentee or non-resident doctors		\$ 55		By Courier?
Part-time ordinary members (less than 10 hours per week)		\$ 55		By Post?
Non-practising ordinary members, under 60 years old		\$ 55		Your Monthly Newsletter?
Residents & Doctors in Training		Free		By Email?
Non-practising ordinary members, over 60 years old		Free		By Courier?
Patron and honorary members		Free		By Post?
Payment can be made by cheque payable to SCLMA or by direct debit to:				
SCLMA Westpac Account. BSB: 034-243 ACCOUNT NUMBER: 11-9298				
Please return this form either by email (scanned) or Fax or Post with details of your E.F.T. to:				
Email: jobo@squirrel.com.au Post: SCLMA PO BOX 549 COTTON TREE 4558 Fax: 5479 3995				
Please note: Membership applications will be considered at the next Management Committee meeting.				

EXTRA CLASSIFIEDS

LOCUM NEEDED – TWEED CITY FAMILY PRACTICE

Tweed City Family Practice is a well-established medical practice located within Tweed City Shopping Centre on the beautiful Tweed Coast. We are seeking an experienced GP to locum with us during the busy Christmas/NY period of December to early February. Join us for a week or stay for the whole time. A permanent role may also be available.

What we can offer you:

- Excellent GPs, admin and nursing staff, many of whom have been working with us for over 10 years
- Convenient large shopping centre with about 200 shops and ample parking
- Large, modern medical centre
- Large 5 bed treatment room with 2-3 nurses every day
- Care plan room; Skin procedure room
- Care plan nurses and organised care plan clinics
- Range of allied health plus onsite pathology
- Excellent teamwork
- 70% billing split
- Minimum guaranteed rate of \$150 for first three months
- Majority Bulk billing, however female GPs do private bill
- Elderly demographics; More than enough patients
- Chronic disease management; Skin check and procedures
- Beautiful beaches; Relaxed lifestyle
- 20 minutes' drive to the Gold Coast
- Accommodation allowance provided

Why not get away over Christmas/NY and spend a week or 10 weeks on the Tweed Coast? Bring your family down and enjoy the beautiful beaches and relaxed lifestyle just 20 minutes south of the Gold Coast. **For a confidential discussion please contact Felicity Schilling via email :**

felicity@vitalhealthcare.net.au

LOCUM NEEDED -

HELENSVALE FAMILY MEDICAL PRACTICE

Helensvale Family Medical Practice is an established family practice located within Helensvale's Westfield Shopping Centre. We are seeking an experienced GP to locum with us during the busy Christmas/NY period of December to mid February. Join us for the whole period or just a week or two. A permanent position may also be available.

Here is what we can offer you:

- Excellent GP's, admin and nursing staff
- Busy Westfield Shopping Centre
- 6 consulting rooms
- 3 bed treatment room with full time nurse cover
- Care plan room
- Organised care plan clinics
- Range of allied health plus onsite pathology
- 70% billing split
- 75% on weekends
- Minimum guaranteed rate of \$150 for first three months
- Majority bulk billing, however procedures are privately billed
- DWS
- Accommodation allowance provided

Spend some time on the Gold Coast over the school holidays and take the kids to all of the attractions.

For a confidential discussion please contact Felicity Schilling via email *felicity@vitalhealthcare.net.au*



Your pathology provider on the Sunshine Coast



Dr Irene Krajewska FRCPA FIAC

E: irene_krajewska@snp.com.au

T: (07) 5459 1400

Dr Irene Krajewska graduated from Manchester University in 1978. After five years of FRCS surgical training in the UK and South Australia, she undertook training in anatomical pathology at the IMVS in Adelaide, where she developed an interest in GIT, gynaepathology and cytology under Prof. Svante Orell. She was awarded the RCPA Fellowship in 1990 and the Fellowship of the International Academy of Cytology in 1991. Irene has been an examiner for the RCPA and Australian Society of Cytology. She joined Sullivan Nicolaides Pathology in 2003 and is based on the Sunshine Coast. Her interests are FNA cytology, breast pathology, dermatopathology, gastrointestinal pathology and gynaepathology.

Dr Jerome Lai FRCPA

E: jerome_lai@snp.com.au

T: (07) 5459 1400

Dr Lai graduated from the University of Queensland in 1984 and undertook further training in pathology at the Princess Alexandra Hospital and the Mater Misericordiae Hospital in Brisbane. He was awarded the RCPA Fellowship in 1991. Before joining Sullivan Nicolaides Pathology, Dr Lai was Pathology Queensland's Director of Pathology for the Sunshine Coast region.

Dr Karien Treurnicht FRCPA FIAC

E: karien_treurnicht@snp.com.au

T: (07) 5459 1400

Dr Karien Treurnicht graduated cum laude from the School of Medicine at the University of Pretoria, South Africa, in 1995. Karien moved to the UK in 1999 and undertook specialist training in histopathology at a number of London hospitals. She gained a Fellowship from the Royal College of Pathologists (FRCPath UK) in 2003 and in the following year went on to a Urological Pathology Fellowship at Bostwick Laboratories in Richmond, Virginia, USA. In 2005, Karien became Medical Director of Bostwick Laboratories, London, a full-service independent medical laboratory specialising in the interpretation of prostate and urological biopsies. She joined Sullivan Nicolaides Pathology in 2015 and is based at the Buderim laboratory. Karien is widely published and has presented at conferences internationally.

CLASSIFIEDS

VR GP REQUIRED FULL TIME OR PART TIME – LAKE KAWANA GENERAL PRACTICE

- This is a fantastic opportunity to join our expanding team in a huge growth area
- Busy practice with well established and loyal growing patient base; 14 consult rooms, 5 bed treatment room and a separate procedure room
- Fantastic support team of nurses and reception staff
- Dedicated Chronic Disease management nurse
- Long established, completely computerised and accredited
- Pharmacy and pathology on site plus many allied health professionals and specialists in the building.

For a confidential discussion please contact Laura Wilkinson, Practice Manager on 5493 3800
Email: manager@lkgp.com.au
December 2018

VR GP – MEDICINE ON SECOND, MAROOCHYDORE

- Full time/Part time positions available to start Mid Jan 2019
- Busy and well established medical centre in the heart of Maroochydore; Pathology and pharmacy onsite
- Fantastic team of friendly doctors, nursing and reception staff; 10 large consulting rooms with well equipped treatment room
- Great opportunity, work life balance and no after hours.

If you would like to enquire about this position, please call 07 5443 9455
Email : judy@medicineonsecond.com.au
November 2018

CONSULTING ROOMS AVAILABLE

- New consulting rooms are available for sessional or lease basis In Pulse Oceanside building
- In close proximity of Sunshine Coast University Public and Private Hospital.
- Close to Parking Lot and local bus stop
- Two consulting rooms facing lake side and New University hospital and one additional procedural room
- All Electricity, heating and air conditioning included.
- Able to provide secretary support if needed.

Contact Number 07 5437 7390
Email : reception@drajayverma.com.au
October 2018

VR GP REQUIRED – PELICAN WATERS FAMILY DOCTORS

For further information please contact Practice Manager:
Karen Clarke on 07 5492 1044 or e-mail gbmedcentre@bigpond.com.au. (Afterhours on 0438 416 917)
Continuing as per request.

GENERAL PRACTITIONER (VR) - SUNSHINE COAST QUEENSLAND

To find out more, please email your resume to admin@nambourclinic.com.au or ring Rowena for an informal chat 0412 292 666.
Continuing as per request.

BRAND NEW CONSULTING SUITES IN BIRTINYA - AVAILABLE IMMEDIATELY

130sqm available for lease at Pulse Oceanside Medical Centre – opposite the Sunshine Coast University Public & Private Hospitals and bus exchange

- Specialist tenants include: Pathology, Radiology, Neurology, Orthopaedics, Anaesthetist, Cosmetic Injectables, Specialist Physician & Psychologist
- Other tenants: Coffee Club, Raw Energy, Good Bean Birtinya & Sushi
- Convenient patient parking
- Allocated 2 car parks for tenancy
- 3 year lease with an option of a further 4 x 3 years
- Option exists at any time to purchase at a pre-negotiated fixed \$ figure
- Floorplans & suggested layouts available

For further information please contact:
Lorraine Corbett at Corbett Neurophysiology
P 07 5503 2400 M 0438 400 400
E admin@corbett.com.au
December 2018

VISITOR CONSULTING ROOM AVAILABLE FOR SESSIONAL RENTAL - LAKE KAWANA SPECIALIST CENTRE. BIRTINYA

- Large Medical suite located on Ground Floor 6/ 5 Innovation Parkway. Co-located with Kawana Private Hospital overlooking Lake Kawana
- Generous, modern and well equipped reception and patient waiting area
- Treatment room available
- Same site pharmacy and pathology facilities and close to Radiology
- Convenient patient parking and underground designated park for specialist visitor
- Can bring own receptionist to session or we can provide meet and greet
- Kitchen and toilet facilities available for staff
- Full and half day sessions available

For further information please contact Practice Manager, Janette Ritchie at janetteritchie@inet.net.au or mobile 0400 593 007
September 2018

CLASSIFIEDS UPDATE!

GUIDELINES FOR 2019

- Classifieds are FREE for current SCLMA members
- Classifieds have a placement life of 3 newsletters
- From February 2019 word count should be no more than 200 words
- Long-term classifieds will be condensed
- Cost for non-members is \$100 + gst

ALL QUERIES:

Contact: Jo 0407 07 112
Email: jobo@squirrel.com.au

SCLMA CLINICAL MEETING - 29 NOVEMBER 2018

Maroochydore Surf Club Function Room

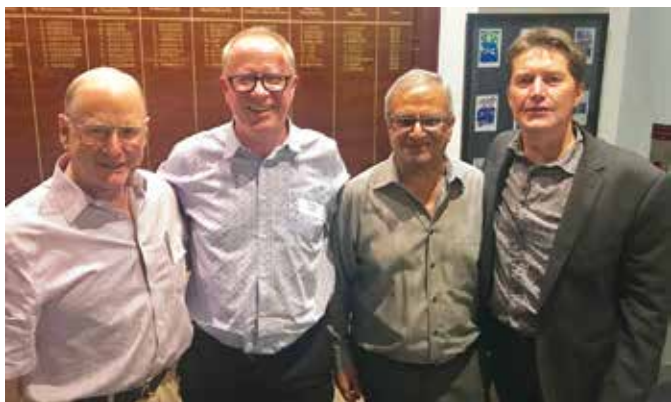
Speaker: Dr Peter Georgius, Pain Medicine Specialist and Rehabilitation Physician

Topic: Neuroscience of Pain - CRPS (Complex Regional Pain Syndrome).

Speaker: Dr Susan Ballantyne, Senior Medical Advisor, Queensland Health

Topic: 'Medicinal Cannabis – yesterday, today and tomorrow'.

The SCLMA also welcomed Dr Dilip Dhupelia, President, AMA Queensland.



Dr Russell Stitz, Past President AMA, Dr Shaun Rudd, Chair of Board & Council, AMA Queensland, Dr Dilip Dhupelia, Current President, AMA Qld & Dr Roger Faint, Current President SCLMA.



Sponsors - Liz Campbell, Shauna Moloney from Stimwave with presenter, Dr Peter Georgius.



SCLMA members - Drs Clive Fraser, Wayne Crawford, Peter Jacobs & Michael Barrett



SCLMA member Dr Kirsten Price with pending member Dr Rose Iron



Presenter Dr Susan Ballantyne, Senior Medical Advisor, Qld Health.

Thank you to all our supporters who make this newsletter happen by providing interesting content and advertising!
We wish you and your family a Merry Christmas and a safe and Happy New Year.
May the festive season be all you wish and need it to be!

