



SCLMA President's Message

Dr Roger Faint



I am once again at the rural single doctor town of Taroona (north of Miles) for eleven days, amidst the drought which is very evident from about Wondai westwards.

Water restrictions and now metered bore water are having a significant effect on the attractiveness of these small towns and must discourage people from moving to the West.

Attracting staff to provide services is becoming very difficult including the local retirement village which obviously needs improved funding for decent patient-staff ratios and allied health support services. The retirement village is fortunate that the one rural GP in town visits on a weekly basis for a morning. The GP is supported usually by an RN, so the care is holistic, efficient and collaborative. Old school perhaps but a wonderful supportive clinic and environment for patients.

The QLD government has recently announced minimum nursing staff-patient ratios to state owned retirement villages, which is insightful and essential to provision of good care. The Aged Care Royal Commission needs to mandate the same as GPs are increasingly finding it difficult to provide good comprehensive care in the retirement village environment and are withdrawing their services. This is evident locally on the Sunshine Coast and I have had personal experience in this regard.

This aged care significant issue is with us and I worry the Commission is being distracted.

The AGM was held last month alongside the clinical meeting and I thank Dr Greg Finch, Spinal Surgeon, and Katrina Egan, Physiotherapist for their support. The Committee is now joined by Dr James Tunggal, Orthopaedic Surgeon, and a newly created position of GP registrar representative,

Dr Annie George. I look forward to their input on the committee. Dr Wayne Herdy has stepped down as a committee member but will remain as AMA Queensland North Coast Area Representative. Welcome to all.

As mentioned in previous letters, the SCLMA has been invited, as a member of the Sunshine Coast Community, to join the external reference group for the SCHHS Master Clinical Service Plan 2020-2030 with the first meeting in October. What this means is that the SCLMA has an opportunity to have input into the local provision of health services and how they are delivered.

Dr John Evans, Radiologist, and I will be sharing the responsibility of attending the meetings and will keep members informed.

The SCLMA would appreciate any feedback and thoughts for us to take to the meetings.

Finally I would like to thank the committee and members for having faith in me as President for another year. The SCLMA is growing in membership, has very successful clinical meetings, is becoming more financially viable, has become a successful fundraiser and is becoming a more important community health spokesperson.

Thank you to all members for your support

Dr Roger Faint



**Sullivan
Nicolaides
PATHOLOGY**
Quality is in our DNA

**The SCLMA thanks
Sullivan Nicolaides
Pathology for the
distribution of the monthly
newsletter of the Sunshine
Coast Local
Medical Association.**



CONTACTS:

President	Dr Roger Faint Ph: 5445 1046 (W) Ph: 0448 848 327
Vice President and Shared Meets Conv.	Dr Scott Masters Ph: 5491 1144 (W)
AMAQ North Coast Area Representative	Dr Wayne Herdy
Secretary:	Dr John Evans
Treasurer:	Dr Peter Ruscoe
Newsletter Editor:	Dr Kirsten Hoyle Ph: 5452 6511 (W)
Shared Meets Conv.	Dr Alicia Lorenz
Committee:	Dr Tau Boga Dr Fabio Brecciaroli Dr Grant Eddie Dr Jonathan Last Dr Mason Stevenson Dr James Tungal
GP Registrar Rep:	Dr Annie George
Hospital Liaison:	Dr Shrey Singh
PHN Representative:	Dr Jon Harper
Student Representative:	Jack Wilkinson

For general enquiries and all editorial or advertising contributions and costs, please contact:

Jo Bourke (Secretariat)

Ph: 5479 3979

Mob: 0407 037 112

Fax: 5479 3995

The Sunshine Coast Local Medical Association welcomes contributions from members, especially *'Letters to the Editor'*.

Please address all correspondence to:

SCLMA PO Box 549 Cotton Tree 4558

Email: jobo@squirrel.com.au

Fax: 5479 3995

Newsletter Editor: Dr Kirsten Hoyle

Email: kirsten@eximious.com.au

Disclaimer: The views expressed by the authors or articles in the newsletter of the Sunshine Coast Local Medical Association Inc. are not necessarily those of the Sunshine Coast Local Medical Association Inc. The Sunshine Coast Local Medical Association Inc. accepts no responsibility for errors, omissions or inaccuracies contained therein or for the consequences of any action taken by any person as a result of anything contained in this publication.



**OCTOBER 2019
NEWSLETTER
Deadline will
be FRIDAY 18
OCTOBER 2019**

- Perhaps you might like to comment on articles published.
- What would you like to see in the newsletter?
- Do you have some jokes we can publish (and not offend anyone!!).

Our circulation via email, post and courier (Sullivan Nicolaides Pathology) reaches more than 1,000 recipients!

Contact Jo: 5479 3979

Mobile: 0407 037 112

Email: jobo@squirrel.com.au

Fax: 5479 3995

We welcome new content - case studies, local news and photos. If you are a new member, send in a short bio and a photo to introduce yourself.

ARE YOU A MEMBER?

If you are not a member please complete the application form available on the website:

www.sclma.com.au.

You will need two proposers to sign your application form. If this is a problem, come along to a monthly clinical meeting to introduce yourself

Enquiries: Jo Ph: 5479 3979 or 0407 037 112

Email: jobo@squirrel.com.au

Are you listed on the Member Directory on our website? Are your details correct?

Directory form available on the website.



Editorial

In only a year, activist Greta Thunberg has transformed from being an unknown Swedish schoolgirl to speaking at Davos, the United States Congress and most recently, the United Nations.



Despite many conservative right voices trying to discredit her and silence the climate change movement, her Twitter followers have increased by 500,000 this week alone!

Today's teenagers are growing up on the internet and they know how to convert social media into a real world movement. They create meme-able signs (Our oceans are rising and so are we!; Change humans, not the climate; ScoMo we have FOMO - of our future; There is no planet B) that are rapidly disseminated on the internet. And as New York Times' reporter, Charlie Warzel noted, they "know how to spot enemies looking to divert attention and to ignore or dismiss them."

Former Australian politician, Scott Ludlam, recently wrote that the great question of our time is, "How much longer will people quietly submit to the calculated ruination of the world?" He answered that he thinks the majority will continue to do so for a while longer at least. Although a cohort of youth, disgusted with current day political negligence, is signalling that it is set to rebel. By virtue of the fact that the likes of teenage Greta Thunberg has many sides of the political spectrum talking - angrily or in support - confirms that the drive to disrupt or disobey is not hard to understand, or even irrational. It has enriched and nourished public discourse which can only be a good thing.

Perhaps we could do with more impassioned teenagers who are able to float above the fray as they accent social/political issues that demand addressing, however polarising the views.

We could do with an Australian Greta - ready to take on the state and federal governments and health ministers with regards to the revamping of health funding we so urgently need!

The late historian, Howard Zinn said that, "we don't have to wait for some utopian future. The future is an infinite succession of presents, and how to live now as we think human beings should live, in defiance of all that is bad around us, is itself a marvelous victory."

*Regards,
Kirsten*

e. kirsten@eximious.com.au

HIGHLIGHTS in this issue:

- P 4-5: Adj. Prof Naomi Dwyer, CE, SCHHS
- P 7: SCHHS - GPLO Update
- P 8-9: AMA Queensland President's Report
- P 11: Oli Steele - Ramsay Health Update
- P 13: Dr Wayne Herdy - 'Which part of the sky is falling in this time?'
- P 15: PHN September Update
- P 18: Dr Clive Fraser - Motoring
- P 24: The Poole Group - 'Is your SMSF Compliant?'

Please 'like', 'share' and 'follow' our Facebook page: [sunshinecoast local medical association](https://www.facebook.com/sunshinecoastlocalmedicalassociation).

Website: www.sclma.com.au

CLINICAL MEETINGS 2019:

Please note that these details are correct at time of printing! They may change! Check our website for latest updates. www.sclma.com.au Click on Activities and Meetings.

THURSDAY 31 OCTOBER 2019

- Speaker: Dr David McIntosh, Paediatric ENT
- Topics: 'Allergy Management and the need for Comprehensive Management'
- and 'Tongue Tied over Tongue Ties?'
- Sponsor: Dusk till Dawn Sleep Centre

THURSDAY 28 NOVEMBER 2019

- Speaker: Dr Caroline Hughes, Paediatrician
- Planning in progress

2020: Feb - Dr Dilip Dhupelia AMAQ President (TBC)
Mar - ENT Evolve - Dr Fraser-Kirk (TBC)

Thanks to those who have sent requests to speak - we are compiling the 2020 details.

ENQUIRIES: Jo 0407 037 112

HEALTH SERVICE LINK - SEPTEMBER 2019

Great Clinicians of the Sunshine Coast

We are fortunate to have so many great clinical leaders within our community and I am privileged to be in regular contact with many of them. Moving forward I'd like to take the opportunity to introduce you to some of my team, and give them the opportunity to share insights into their role and their vision for health service delivery into the future.

Medical Director, Sunshine Coast University Hospital Emergency Department – Dr Luke Burman



First off is Dr Luke Burman who plays a critical role as the Medical Director of Sunshine Coast University Hospital Emergency Department. Luke has been in his current role since the beginning of 2019, and has been a critical part of the Emergency Department since SCUH's opening. With a background in emergency medicine, Luke feels his transition to clinical leadership couldn't have come at a better time.

"It is critical we look forward to when we are getting upwards of 300 patients a day in ED. We have recently had some extremely busy times, but we need to get used to these numbers, they will become the norm.

"I see the role of a 'Director' as just that, setting a direction, defining a vision and bringing people towards it. Effecting change is so rewarding. "Our health service is such a vital part of the Sunshine Coast community. It is an amazing infrastructure – but more importantly, behind the bricks and mortar is a huge team who provide exceptionally high-quality care with the goal of improving even further. It is exciting to see the wheels in motion on this journey," Luke said.

Luke is a Queenslander born and bred, he studied at UQ and has done most of his training in SEQ. With four children, including a four-month old baby, and two fur babies, his household sometimes makes our ED feel quiet. With a strong multi-disciplinary group of clinical colleagues, Luke is at the forefront of introducing evidence based strategies to improve timely access to emergency care, within the context of optimised access and flow across our system of care.

GP Liaison Unit - website

This month our GP Liaison team launched a new [GPLU web hub](#). If you haven't had a chance ensure you keep this as a key tool for learning more about smart referrals, clinical prioritisation criteria and other projects the team is working on to improve our relationship and integration with GPs.

You can contact the team:

Dr Michelle Johnston, Dr Edwin Kruys, Dr Marlene Pearce on 07 5202 3822 Mobile: 0439 591 731 Fax: 07 5202 1044 or email: SCHHS-GPLO@health.qld.gov.au.

What is the Primary Care Fracture Clinic?

Did you know many simple fractures and soft-tissue injuries are suitable for management in primary care and do not require specialist orthopaedic management in the public hospital fracture clinic?

However, not every GP may wish to manage these conditions themselves. If this is the case, GPs may refer directly to one of the Primary Care Fracture and Soft Tissue Injury Services, available at several locations on the Sunshine Coast. You can [learn more](#).

(www.health.qld.gov.au/sunshinecoast/healthcare-providers/fracture-clinics)



HEALTH SERVICE LINK - SEPTEMBER 2019 /cont:

The service is bulk-billed and includes plaster or fibreglass casts, crutches, and braces/splints (e.g. moon-boots) if required.

Patients with suitable simple injuries who are seen in the Emergency Department or who are referred to Orthopaedic Fracture Clinic may also be offered this choice for their fracture or soft-tissue injury management. This is another great example of clinicians working collaboratively across the sector to provide timely care in the right place.

Master Clinical Services Plan

If you missed the update last edition, we're embarking on the development of our Sunshine Coast Health Master Clinical Service Plan 2020-2030. This plan will serve as our 10-year roadmap to plan and prioritise the delivery of public healthcare to meet the growing and evolving healthcare needs of our community across the Sunshine Coast and Gympie regions. We've established an external stakeholder reference group with key representatives from the health industry, local government and community groups to create a shared understanding of the challenges and opportunities relevant to the planning and delivery of responsive, high-quality public healthcare over the next 10 years. This group includes representation from the SCLMA. To date a large amount of information has been gathered from a range of sources and forums, which we look forward to sharing with our stakeholders as we shape the future of health care for the SCHHS together.

Until next time, take care.

Naomi

Adj. Prof Naomi Dwyer, Chief Executive, SCHHS

Move without pain™

We use new patented evidence-based Orthotic Technology!

Guaranteed Outcomes

- Evidence-based research in Biomechanics and Kinetic Orthotic therapy.
- Leading therapeutic technology including:
 1. Shock Wave therapy Machines, excellent for treating chronic plantar fasciitis and Achilles tendonitis.
 2. New Photodynamic Fungal Nail Therapy Unit, highly effective and significantly safer than existing laser for this treatment.
- Passionate and experienced Team committed to delivering the best possible treatment for our patients on the Sunshine Coast and in Brisbane.

Locations

Maroochydore, Noosa, Nambour, Caloundra, Morayfield and Indooroopilly with satellite practices at Mapleton and Kenilworth.

All EPC patients Bulk Billed



Phone: 1300 130 410
www.daneverson.com.au



SUNSHINE COAST
HEART
SPECIALISTS
your local heart team



Your LOCAL Heart Team Comprehensive Sub Specialty Practice

CARDIOLOGISTS

Dr Peter J Larsen
Dr Stuart J Butterly
Dr Mark A Johnson
Dr KK Lim
Dr Naresh Dayananda
Prof Tony Stanton
Dr Daljeet Gill
Dr Matthew Tung

CARDIAC TESTING

- Transthoracic Echocardiogram
- Exercise Stress Test
- Stress Echocardiogram
- Dobutamine Stress Echocardiogram
- ECG
- 24 hour Holter ECG monitor
- 24 hour Ambulatory BP monitor
- ECG Event Monitor (7 days)
- Device Check (PPM or ICD)
- CT Coronary Angiogram (Radiologist co-reported)

SPECIALIST CARDIAC SERVICES

- Management of Coronary Artery Disease
- Cardioversion
- Coronary Angiography
- Coronary Angioplasty and Stenting
- Structural Heart Intervention – ASD/PFO Closure
- Valvular Heart Disease – Aortic & Mitral Valvuloplasty
- Management of Heart Rhythm Disorders
- Permanent Pacemaker & ICD Insertion
- Electrophysiology Study & Ablation Therapy
- Transcatheter Aortic Valve Implant/Replacement (TAVI / TAVR)
- Left Atrial Appendage Occlusion (LAAO)

PHONE: 5414 1100 FAX: 5414 1101 admin@scheart.com.au www.scheart.com.au

BIRTINYA

Suite 4 Ground Floor
Sunshine Coast University
Private Hospital, 3 Doherty
Street Birtinya QLD 4575

BUDERIM

Suite 9 Medical Centre
Buderim Private Hospital,
12 Elsa Wilson Dr Buderim
QLD 4556

TEWANTIN

Suite 1, 66 Poinciana Ave
Tewantin QLD 4565

GYMPIE

Ramsay Medical Consulting
Suites
70-72 Channon Street
Gympie QLD 4570

CABOOLTURE

Consulting Suites,
Caboolture Private Hospital,
McKean St, Caboolture
QLD 4510

Quality health care close to home

Noosa Hospital is a fully accredited medical and surgical hospital located in the heart of Noosa. We welcome privately insured patients, veterans, public patients and overseas visitors.



The hospital provides a range of comprehensive services including:

- Emergency Department
- Bariatric Surgery
- Breast & Endocrine
- Ear, Nose & Throat
- Endoscopy
- Gastroenterology
- General Medicine
- General Surgery
- Geriatric Medicine
- Gynaecology
- Haematology / Oncology
- Hepatology
- Intensive Care
- Oral & Maxillofacial
- Orthopaedics
- Plastic & Reconstructive Surgery
- Rehabilitation & Pain Medicine – Day and Inpatient programs, including Hydrotherapy
- Renal Medicine
- Respiratory Medicine
- Urology
- Vascular

**Call 07 5455 9200 for more information
or visit noosahospital.com.au**

111 Goodchap St, Noosaville QLD 4566



Noosa Hospital
Part of Ramsay Health Care

GP Liaison: Your Hospital Connection – SEPTEMBER 2019



We're pleased to announce our website is LIVE! Save the link for our [Healthcare Providers](#) page on your desktop for helpful links, shortcuts, resources and FAQs.

Spotlight on alternatives to Emergency Department referrals

Emergency Eye Presentations

The Minor Illness & Injury Clinic (MIIC, Caloundra Hospital) is co-located with the SCUH Ophthalmology service. In working hours, consider sending patients likely to require Ophthalmologist review to MIIC rather than SCUH, as there is a limited ophthalmology presence at SCUH.

Bleeding in Early Pregnancy

The ED is not the preferred place to refer medically-stable women with early pregnancy complications like miscarriage and blighted ovum. Instead, refer to the Early Pregnancy Assessment Service (EPAS) who will phone the patient within 24 hours to arrange an urgent review. Notify the EPAS Coordinator (CNC) on 5202-7241 in working hours when you send in a referral, and mark it as 'RAPID ACCESS – EPAS'.

Suspected DVT

In many cases, it may be appropriate for GPs to commence a patient on interim oral anti-coagulation if you are unable to obtain an USS on the day. The ED has limited access to USS in peak times and after-hours, with critical presentations taking priority. This can result in lengthy delays for patients. Please consider if your patient would be suitable for interim anticoagulation, with a community-based USS arranged for the following day.

Requests to Expedite Care

The ED sometimes receives patients referred by GPs for non-emergency presentations, where the referrer appears to be trying to expedite a specialty team review. Unless the patient's condition has deteriorated and they require emergency and/or inpatient care, referring to ED is unlikely to benefit the patient. Contact the specialty department directly if you need interim management advice, or want advice on expediting outpatient review.

Education Calendar

GP Shared Care Antenatal Workshop Part 2

Saturday, 19 October @ Sunshine Coast Health Institute (SCHI), Birtinya

Accredited for 40 Category 1 RACGP CPD points [Event Registration Link](#)

This free workshop targets the needs of GPs participating in antenatal shared care, however all GPs and Registrars are welcome to attend. Workshop 2 focuses on the management of common presenting problems and complications in the antenatal, puerperium and postnatal period. This year, we are moving to an interactive, small-group, case-based learning.



Sunshine Coast Hospital and Health Service

Exceptional people. Exceptional healthcare.



Contact the GP Liaison Unit

Dr Michelle Johnston	(GPLO)
Dr Edwin Kruys	(GPLO)
Merrin Godwin	(Clinical Nurse)
Sandi Kemp	(Clinical Nurse)
Peta-Maree Willett	(Project Officer)
Sue Hawkins	(Admin Officer)
Claire Juratowitch	(Admin Officer)

Email SCHHS-GPLO@health.qld.gov.au
 Phone 07 5202 3822 / Mobile 0439 591 731
 Fax 07 5202 1044
 Sunshine Coast University Hospital
 6 Doherty Street Birtinya 4560
 PO Box 5340 Sunshine Coast MC 4560



Meeting with members to discuss local issues of importance

In the coming months, AMA Queensland will be meeting with members, both locally and regionally and attending local medical association (LMA) meetings across the state. In August, Dilip met with the Redcliffe LMA, the Fraser Coast LMA and Hervey Bay Hospital doctors and attended the launch of the Brisbane LMA. Visits to the Central Queensland LMA, Bundaberg, and Cairns are all planned before year's end.

We consider the LMA meetings invaluable to understanding local issues of concern, directly from the practitioners on the ground in those areas.

It also presents you with a chance to directly address the President about how you can contribute to AMA Queensland's policy and advocacy work.

New Workplace Relations Advisory Package

To assist you navigate the complex and ever-changing rules for managing employees, AMA Queensland has just launched a new Workplace Relations Advisory Package.

The Workplace Relations Advisory Package will give you up-to-date and practical support with all employment matters. You will have access to free attendance to workplace relations training events and webinars, contract, manuals, privacy essentials, audits and leave calculations. You will also stay up-to-date with changes on industrial relations and employment law.

By subscribing to WRAP your practice will have access to our full range of services for one flat fee, without additional charges.

You can read the full list of services included at www.amaq.com.au

Antibiotic Stewardship

Members would have seen AMA Queensland member Dr Paul Bartley's excellent opinion piece on antimicrobial stewardship published this month in the MJA Insight, Australian Medicine and the Courier Mail.

Paul adds to AMA Queensland's concerns by providing his expert view regarding the approach taken by Queensland's Minister of Health and Ambulance Services to allow Pharmacists to prescribe antibiotics for UTIs, whilst infectious disease specialists are raising their concerns on multi resistant pathogens and are urging medical practitioners to be ambassadors and to have this issue front of mind in our daily practices.

Congratulations, Paul, for the timely reminder.

Private Health insurance

As you are aware, affordability of Private Health Insurance continues to be a problem, despite the slight slowing down in the premium increases. Each quarter, we continue to see people dropping their private health insurance and ironically each day we read stories about code yellow and ambulance ramping in our public hospitals. The other issue is more older people are joining health funds and younger people are quitting their cover. Something needs to give and the AMA Federal Council has this high on its radar as we

88 L'Estrange Terrace, Kelvin Grove QLD 4059 • 07 3782 2222 • www.amaq.com.au



call for simpler PHI policies. The sooner governments understand that the public sector will be unable to cope without a booming private sector, the better.

Crisis talks over emergency department issues

In August, AMA Queensland and the Australasian College for Emergency Medicine (ACEM) met with Cairns and Hinterland Hospital and Health Service executives to seek an immediate commitment to fix the hospital's emergency department chronic capacity, ambulance ramping and overcrowding issues.

AMA Queensland and ACEM again urged Cairns Hospital to immediately adopt a number of actions to provide some short-term relief:

Following our meetings, the hospital's management committed to providing clear short, medium and long term plans and timeframes in response to issues repeatedly raised by staff, including operational and infrastructure issues. Management also committed to lay out their plans to staff and work on the longer-term issues to improve culture within the hospital.

While we welcomed the commitments to work on system/culture change within the hospital, short-term measures to address the crisis are needed immediately, with a greater focus on implementation and resourcing.

We will see what management proposes, and we will be escalating our concerns to the Queensland Health Minister if the response once does not result in satisfactory solutions.

You can read the joint AMA Queensland and ACEM media releases issued in August at www.amaq.com.au.

If you have any issues you feel need AMA Queensland's attention, please send us your thoughts directly via membership@amaq.com.au.

Dr Dilip Dhupelia, President AMA Queensland

Jane Schmitt, CEO AMA Queensland



88 L'Estrange Terrace, Kelvin Grove QLD 4059 • 07 3782 2222 • www.amaq.com.au

WHAT MAKES YOU TICK?

Call 07 5390 6000 or visit
sunshinecoastuniversityprivate.com.au
 3 Doherty Street, Birtinya QLD 4575

The **Sunshine Coast University Private Hospital** provides a comprehensive range of cardiac services such as coronary angiography, exercise stress testing, a coronary care unit and a full range of support and rehabilitation programs.

Our experienced and nationally respected team of cardiologists, who admit to the coronary care unit and share 24 hour – 7 days a week cover for their patients, are well known to the local Sunshine Coast community.

For more information about our cardiology services or other services offered by the **Sunshine Coast University Private Hospital** please visit sunshinecoastuniversityprivate.com.au

 **Sunshine Coast University Private Hospital**
 Part of Ramsay Health Care

Dr Petra Ladwig

Infertility and Gynaecology



Providing:

- IVF and Infertility Services
- Colposcopy and treatment with abnormal smears
- Pre-conceptual counselling and antenatal shared care
- Pelvic floor reconstruction/incontinence surgery
- Contraception and menopause counselling
- General gynaecology
- Magnetic chair pelvic floor rehabilitation

Queensland Fertility Group
 Leading minds dedicated to your success



Suite 5, 5 Innovation Parkway, Birtinya Qld 4575
 Ph. 07 5437 7244 | www.petraladwig.com

Introducing HyperArc



A true end-to-end solution for multiple brain tumours, now available close to home at Icon Maroochydore.

- Precisely targets multiple tumours with high-doses of radiation
- Limits dose to healthy brain tissue, reducing severity of side effects
- Shorter treatment times and number of treatments

Our doctors accept referrals from specialists and GPs for all cancer types with no wait list.

Dr Colin Dicks

Lung, skin, breast and prostate cancers, palliative care and psychosocial oncology issues.



Dr Marcel Knesl

Breast, gastrointestinal and genitourinary cancers, and lymphoma.



Dr Myo Min

Head and neck, gastrointestinal, lung and skin cancers.



Dr Dinesh Vignarajah

Genitourinary, gynaecological, central nervous system and breast cancers.



60 Wises Road, Maroochydore
 P 07 5414 3700 | F 07 5414 3701
admin.maroochydore@icon.team



iconcancercentre.com.au

RAMSAY HEALTH UPDATE – SEPTEMBER 2019



Thank you for the opportunity to update the SCLMA members on developments at the Noosa, Nambour Selangor and Sunshine Coast University Private Hospitals.

Nambour Selangor Private Hospital - Saebo Rejoyce - new technology to benefit day rehabilitation patients

Nambour Selangor Private Hospital continues its commitment to provide a quality and multidisciplinary rehabilitation service to Sunshine Coast patients. The Hospital's Rehabilitation Ward is equipped with local specialised staff who are committed to providing individualised care that support patients to reach their treatment goals as inpatients and through day programs.

Nambour Selangor is the Sunshine Coast's first private hospital to purchase a Saebo Rejoyce – a specialised piece of rehabilitation equipment that mimics upper limb movement to perform daily tasks. The Saebo Rejoyce is a beneficial tool for stroke and upper-limb weakness patients on the Sunshine Coast. It is a gross and fine motor functional movement simulator that supports patients to perform high repetition of motor skills.

The Saebo Rejoyce is tailored to an individual patients' motor capacity and strength before initiating a therapy program. Patients are guided by a therapist and an interactive screen through a wide range of programs which set a learning theme to mimic gross and fine motor skills. Forming part of a comprehensive rehabilitation program, the Saebo Rejoyce is a tool that can provide a fun and self-stimulating therapy platform.

Noosa Hospital - Twenty Years of caring for the Noosa community

The Noosa Hospital came together on Friday 20th September to celebrate the hospital's 20th anniversary. Many members of the hospital's medical fraternity were in attendance including but not limited to Dr Felicity Adams Dr Mary Basire (MAC Chair), Dr Frank Connon, Dr Ian Curley, Dr Kelvin Larwood, Dr Cath Macintosh, and Dr Mark Robinson.

Ramsay Health Care Australia CEO Danny Sims travelled from Sydney to be part of the celebrations, alongside Lloyd Hill Ramsay's Operations Executive Manager - Northern Region. In total over 250 staff and doctors attended what was a great night to recognise and thank the hospital staff for their support of the Noosa community over the past 20 years.

SCUPH - GP Education

SCUPH will showcase its Gynaecology services to GPs at its next GP Education evening to be held in Caloundra at The Rumba Beach Resort on Wednesday 13th November. Doctor Robyn Boston will present on Cervical Screening, Doctor Christopher Price will provide a practical update on gynaecological mesh and Lider Kukurt will cover abnormal uterine bleeding.

To register simply visit www.sunshinecoastuniversityprivate.com.au

Oli Steele CEO

T: 5390 6101

steeleo@ramsayhealth.com.au

Not all necks are the same

Dr Greg Finch FRACS FAOrthA
Spine Surgeon, Orthopaedic Surgeon

Practising from the Nucleus Medical Centre at Buderim Private Hospital, Dr Finch specialises in the treatment of all spinal conditions. So if you're looking to refer a patient with a neck or back problem to a local specialist, contact Dr Finch today. **It's no stretch** to say he's had many years of experience with neck issues.

- minimally invasive spinal surgery
- microscopic spine surgery
- disc replacement surgery
- decompressive surgery
- anterior spinal surgery
- revision spinal surgery
- adult spinal deformity
- cervical spine surgery
- spinal tumours
- spinal trauma



SUNSHINE COAST
SPINE & ORTHOPAEDICS

Ph 5444 7579
Fx 5444 7616

admin@sunshinecoastspine.com.au
www.sunshinecoastspine.com.au

Suite 16a, Nucleus Medical Suites,
23 Elsa Wilson Drive, Buderim

WHICH PART OF THE SKY IS FALLING IN THIS TIME?

Dr Wayne Herdy



Some shock jocks make their reputations and their livings out of predicting disasters and counting heads rolling. Well, the sky is not about to fall in, but this reporter is getting quite worried about one impending health disaster that nobody seems to be very interested in.

Those who know and love me (or otherwise) will know that I have a cohort of drug addicts. Maybe this results from a problem with my toilet training or maybe I just wasn't paying attention to the warnings during medical school. Whatever character flaw led me down this path, I am one of the few who prescribe under the Queensland Opioid Treatment Program (QOTP).

My problem is as follows. I am at or near retirement age. Well, realistically I might hang in there for another decade, but I have done enough to be able to hang up my stethoscope with a clear enough conscience. But when I phone around my fellows who practise addiction medicine to see if anybody can name my successor, I get a uniform response – they also are about to head off to that retirement plan and are looking for successors themselves. Most of the QOTP prescribers I know, those who manage hundreds of patients each, are at or near retirement age. Two have died this year. There is not a lot of us around. Worse, and the real problem, there are no younger doctors eager to take our places. Within five years, ten at most, almost all of the most productive QOTP prescribers in Queensland will no longer be practising. And without an active plan implemented very soon, we will not be replaced.

If drug addicts do not have access to treatment plans, the outcome will be a social disaster. A local senior police officer has publicly said: "When Dr Herdy retires, the crime rate on the Sunshine Coast will double." He is not alone, my own patients say the same thing. And Dr Herdy's case is only one of many parallel scenarios state-wide. As well as the social disaster, drug addicts will suffer every imaginable complication of their chosen lifestyle. OK, not many people really care about junkies or iceheads, but the cumulative health costs will drain the state coffers. [The Commonwealth government decided to pay buckets of gold to clean up Hepatitis C cases, or face the dire prediction from the economists that Hepatitis C would bankrupt the health budget in twenty years and bankrupt the country in thirty.] And the potential cost to the community goes on and on, including motor vehicle accidents, public violence and disturbances of the peace, domestic violence, endless diversion of law enforcement resources, you name it. Drug addicts aren't politically sexy, but eventually the bean-counters will have to admit that it is cheaper to treat them than not.

"They ought to do something about it." But "they", the health workforce planners don't have a plan. The only planning strategy I have heard is to make it easier to get into addiction training courses and to increase the number of training places. But if they can't fill the places they have now, how are they going to persuade young graduates to fill the extra places they create? I drew a likeness to building a bigger car park in the Sahara.

In a few weeks, I will be having a tete-a-tete with Queensland Health (supported by a few of the senior AMAQ secretariat and policy gurus) to discuss this dilemma. I hope to be able to write a sequel to this article informing my readers that the magic wand has been waved and a perfect solution created. Until then, I would welcome suggestions from anybody who has a creative left-field solution that might just work.

Wayne Herdy

Breast Diagnostic Specialists



EARLY DETECTION SAVES LIVES



Freedom to consult a Specialist



MammoPad® breast cushion



Early detection is key



3D Mammography

Breast Diagnostic Specialists is a breast specialist centre on the Sunshine Coast. We are pleased to provide mammograms using the MammoPad® breast cushion for a "softer mammogram".

MammoPad® benefits

- Soft foam for cushioning support
- Padded surface reduces discomfort
- Assists with relaxation during the exam
- Helps hold breast tissue in place
- Aids optimal breast positioning
- Provides a warmer, softer mammogram

Trusted Breast Care

- We offer comprehensive services including Breast Screening, Diagnostics, MRI, Ultrasound and Interventional procedures.
- 3D mammography exams on the Selenia® Dimensions® 3D system by Hologic.
- Procedures including Core Biopsy, Hookwire localization, Cyst Aspiration, Fine needle aspiration and Stereotactic Biopsy.
- Double reading of mammography, independently by two of our Specialists.
- Consultation for your patients on the day, with an on-site Specialist.

Trusted Breast Care

☎ 07 5436 7555
✉ info@mammo.com.au
🌐 mammo.com.au

Breast Diagnostic Specialists
1 Main Drive
Warana QLD 4575

CENTRAL QLD, WIDE BAY, SUNSHINE COAST PHN - September 2019

Pledge to support the end of mental health and suicide stigma

After recently joining the list of signatories dedicated to reducing the stigma around mental health and suicide, Central Queensland, Wide Bay, Sunshine Coast PHN (PHN) is now urging other primary health organisations to commit to the Life in Mind National Communications Charter.

The Charter is a how-to guide for using supportive and respectful language when referring to mental health, mental illness and suicide and recognises we all have a role to play not only in reducing stigma, but also to promote help-seeking behaviour.

Every year, around 600,000 Australians experience an acute mental health condition, with more than 10% reporting severe and persistent symptoms impacting on their day-to-day lives.

PHN CEO Pattie Hudson signed the Charter to formally demonstrate the organisation's commitment to how the organisation will talk about mental health issues.

"It was an easy decision for us to sign the Charter, because the principles reflect everything we strive to embody here at the PHN," Mrs Hudson said.

"By signing the Charter, we commit to prioritising mental health; using respectful language when discussing the issue; and listening to the voices of people who have experienced mental ill-health.

"We recognise the importance of organisations working together for a consistent, respectful national conversation around mental wellbeing and suicide prevention, because only by working in partnership, can we address this challenge.

"We urge other organisations and individuals to join us in signing up to the Charter and contributing to safer conversations that actively work to increase help-seeking behaviour, reduce stigma and encourage collaboration."

Life in Mind, the national gateway connecting Australian suicide prevention services to each other and the community, provides the platform for The Charter, which includes practical tools on how to talk appropriately and respectfully about mental illness and suicide.

For example, instead of saying someone is a 'victim' or 'suffering from' a mental illness, which can suggest a lack of quality of life, try using the terms 'being treated for' or 'someone with' a mental illness.

To avoid glamorising suicide attempts, replace terms like 'failed suicide' or 'suicide bid' with 'non-fatal attempt' or 'suicide attempt', and refrain from using the term suicide out of context i.e. 'political suicide' or 'suicide mission'.

These kinds of resources are more important than ever - data released by the Australian Bureau of Statistics in September 2018 revealed that of all causes of death, 1.9% was attributed to suicide in 2017, with Queensland reporting the largest increase in suicide deaths compared to the previous year - 804 deaths in 2017 compared with 674 deaths in 2016.

You can read more examples of how to talk about mental illness and suicide, as well as the eight principles of The Charter on the Life in Mind website, and pledge the support of your organisation for this vital uniting document.

www.lifeinmindaustralia.com.au/the-charter



Call for Abstracts

1 week to go!



**Sunshine Coast
HEALTH SYMPOSIUM**

18-20 March 2020

2020

The Call for Abstracts for Sunshine Coast Health Symposium closes on 16 August 2019.

All stakeholders in health are invited to submit abstracts for the symposium. This is inclusive of health organisations, practitioners, businesses, health consumers, researchers and educators.

Check out the website to submit your abstract.

www.sunshinecoasthealthsymposium.com.au





BUDERIM PRIVATE HOSPITAL

September 2019

VESTIBULAR OUTPATIENT PROGRAM

ABOUT THE PROGRAM

There are a number of conditions that result in vestibular disturbance. Buderim Private Hospital offers vestibular rehabilitation in an outpatient setting that can help people resolve or manage their condition.

Vestibular assessment will assist in determining if the cause of the patients' symptoms is central or peripheral in nature. Our therapists have experience with vestibular conditions such as benign paroxysmal positional vertigo (BPPV), vestibular neuritis, labyrinthitis, Meniere's disease, acoustic neuroma and central causes affecting the vestibular system such as Parkinson's disease, multiple sclerosis, traumatic brain injuries, concussion and cerebrovascular accidents.

The findings of the assessment will be communicated to the treating GP to ensure the patient has the best care in place, which may also include a review with an ear, nose and throat specialist, neurologist or audiologist, in conjunction with vestibular rehabilitation.

Initial assessment involves a one hour appointment with a vestibular trained physiotherapist using infra red goggles in order to determine the appropriate treatment plan. Vestibular therapists are available Monday - Friday.

HOW TO REFER

GPs can refer to the program by using the referral form available by visiting buderimprivatehospital/rehabilitation.

Patients may access vestibular assessment and treatment by using their hospital extras or through self-funding.



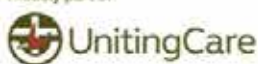
12 Elsa Wilson Drive | Buderim | QLD 4556

Telephone 07 5430 3305 | Facsimile 07 5430 3337 | Email bph.reception@uhealth.com.au

buderimprivatehospital.com.au



Proudly part of





Excellence in Prostate Cancer Diagnosis & Management

Tim graduated from the University of Edinburgh and completed advanced training in urology at teaching hospitals in London and Queensland. He has trained extensively in da Vinci Robotic Surgery at the University Hospital, Leipzig, and the Wesley Hospital.

Tim successfully introduced Robotic Prostate and Kidney Surgery to Buderim Private Hospital. He has pioneered MRI guided robotic transperineal prostate biopsy for safe and accurate diagnosis.

DR TIM NATHAN

MB ChB (Edin), FRCS (Eng), FRCS (Urol), FRACS (Urol)

Suite 6
Buderim Private Hospital
12 Elsa Wilson Drive
Buderim
Ph: 07 5370 2095
Fx: 07 5301 8120
www.drtrimnathan-urology.com.au

Specialising in:

- Mona Lisa Robotic Transperineal Prostate Biopsy
- Da Vinci Robotic Prostatectomy & Renal Surgery
- BPH - Laser Prostatectomy & Urolift
- Stone Disease
- Penile Prosthesis Surgery
- Vasectomy Reversal
- Urodynamic Studies

Patients experiencing ongoing dizziness caused by **vestibular dysfunction?**

**Eden Private Hospital's rehabilitation day programs
help manage the symptoms of vestibular conditions.**

Symptoms:

- Dizziness
- Visual and balance disturbances
- Reduced mobility and anxiety
- Reduced independence and decreased confidence
- Social isolation

Associated conditions:

- Benign Paroxysmal Positional Vertigo (BPPV)
- Vestibular neuritis
- Labyrinthitis
- Meniere's disease
- Stroke / head injuries / tumors
- Ageing

Our programs:

- Address the causes and reduce long term consequences of living with dizziness
- Involve specific exercise therapy to help desensitize your patient to movement
- Provide education to assist functional recovery and improve overall quality of life

**NEW
PROGRAM**

Fenzel goggles are used to assess patients

LET US HELP YOU

For enquiries and assistance, call
Eden Private Hospital
on 1800 333 674.

Eden
Private Hospital

WHEN **EXPERIENCE** AND **PERSONAL CARE** MATTERS

50 Maple Street, Cooroy QLD 4563
Admissions and Assessment: 1800 333 674
T: 07 5472 6472 / edenprivate.com.au

healthcare™

Medical Motoring - Lifetime World Maps

Dr Clive Fraser



When I first graduated in 1981, the average life expectancy of a male in Australia was 71.4 years.

Unsurprisingly, for a female the average life expectancy back then was seven years better at 78.4.

In the 38 years since then, the life expectancy figures for both sexes have improved dramatically to 80.5 years for males and 84.6 years for females.

You might say that in terms of gender bias, men have been closing the gap.

Advances in cancer and cardio-vascular care in Western society probably have played the biggest part in this improvement for both sexes.

Elsewhere in developing countries better nutrition and reductions in infant mortality have steadily improved life expectancy figures there as well.

But anyone who has recently purchased a so-called smart device will not be surprised to see the life expectancy of those devices may be measured in months rather than in years.

I recently experienced this first-hand when I splashed out my cash for a portable GPS device.

I won't mention the name of the brand.

I was persuaded to buy it because it was on sale at a 30 per cent discount and came with the promise of lifetime world map updates.

So in June 2019, I splurged \$244 for my SatNav device.

I must admit that I did download maps of the USA and Western Europe with no plans to go there, but I was disappointed to find that my soon-to-visit Japan still appears to be un-mapped by any Western SatNav device.

Then in July 2019, I received an unexpected email advising me that the device that I'd purchased only four weeks previously was no longer up-gradable.

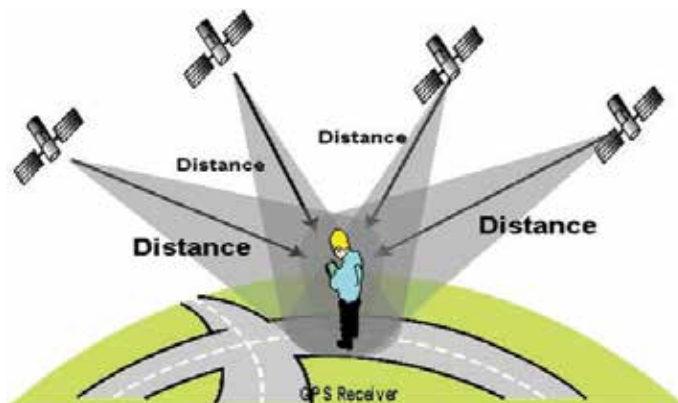
The actual email said: "Your current SatNav is incompatible with ... latest map update. Consider upgrading your hardware."

How could this be, I thought, particularly as the up-graded device they suggested was the same model as the one I'd just purchased?

I'd even registered my device within 30 days of purchase to be eligible for the lifetime world maps offer

The email went on to explain what they meant by lifetime.

"Lifetime is the useful life of the device, which means the period of time that ... (the company) continues to support your device with software updates, services, content or accessories. A device will have reached the end of its life when none of these are available any more.



The useful life of the smartphone app means the period of time that (the company) continues to support the app with updates."

All of this sounds suspiciously like the Apple model of programmed redundancy which keeps customers coming back for a new device year after year.

This idea of a lifetime seemed to be very different to my idea of 80.5 years.

In the Orwellian company's world, it seems that the maker of the device can decide for you when its life is over and it's time to step up to the newest model.

But I'm sure all of this was just a mistake, because I'm pleased to say that my device is still up-dating.

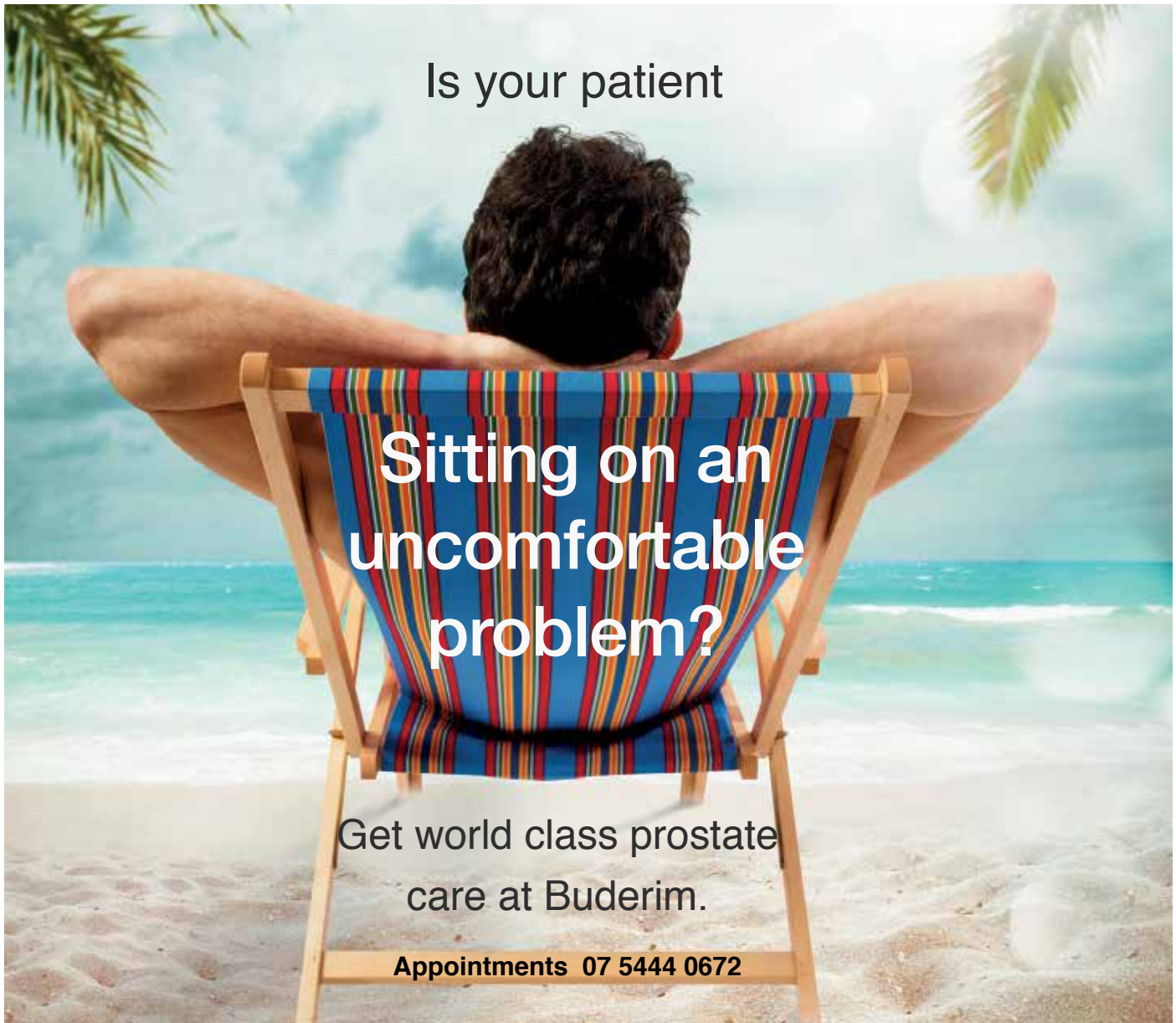
I have a draw full of old SatNav devices that all still work, but have fallen into the crevasse of redundancy.

Perhaps the email referred to one of them.

Safe motoring,

Doctor Clive Fraser doctorclivefraser@hotmail.com



**A/Prof Troy Gianduzzo**

Surgeon of Excellence in
Robotic Surgery™



A/Prof Troy Gianduzzo is accredited as a Surgeon of Excellence in Robotic Surgery™ by the Surgical Review Corporation in conjunction with the Wesley Hospital's accreditation as a Centre of Excellence in Robotic Surgery™.

**Dr Tony Gianduzzo**

Prostate cancer diagnostics
MRI/ Robotic-assisted biopsy

Dr. Tony Gianduzzo offers patients highly accurate prostate cancer diagnostics using the cutting-edge, Mona Lisa Robotic-assisted transperineal prostatic biopsy system after assessment by one of the leading and highest-volume prostate MRI groups in the world – Wesley/ Buderim Private Medical Imaging.



P 07 5444 0672 **F** 07 5444 0997
E info@buderimprostateclinic.com.au
A Suite 2, 5 Lyrebird Street,
Buderim, Queensland, 4556.
W buderimprostateclinic.com.au

A/Prof Troy Gianduzzo is a Surgeon of Excellence in Robotic Surgery™ designee which he received with the Wesley Hospital's designation as a Centre of Excellence in Robotic Surgery™. 'COERS' and 'Centre of Excellence in Robotic Surgery' terms and seals are trademarks of Surgical Review Corporation. All rights reserved.

The children AREN'T GETTING divorced

SEPARATION • BREAK-UPS • DIVORCE



Alvia Turney CEO and
Founder of Act4Tomorrow
Separation Specialists

Your children are not divorcing your ex, they will be part of the other parent's life forever, finding a way to work with your ex will go a long way in helping the children and you keep things amicable after separation.

Coming from a split family or being part of a blended family no longer carries the negative stigma as it used to. With this acceptance many other past dogmas like the children should remain with the Mother have also gone. There are benefits to children having a meaningful relationship with both parents after separation.

By working amicably to achieve a Private Parenting Plan which fits everyone's schedule, life returns to a new normal quickly. It will also save you a small fortune on unnecessary court costs.

ARGUING PARENTS BRING SADNESS, GRIEF AND FEAR TO THEIR FAMILY, WHAT CHILDREN WANT ARE HAPPY PARENTS, BEING TOGETHER IS OPTIONAL.

You do not need a solicitor for a Private Parenting Plan, what you do need to be is:

- 1. REALISTIC**, with the days you choose to care for the children, make sure the schedule fits into your commitments.
- 2. RELIABLE**, follow through, keep changes to a minimum.
- 3. TIMELY**, be on time for pick up and drop offs.
- 4. FLEXIBLE**, swap days or times, accommodate everyone.
- 5. INFORMATIVE**, of incidents, accidents and changes of circumstances.

IF THE CHILDREN REMAIN AT THEIR SCHOOL, KEEP THE SAME FRIENDS AND ARE CERTAIN THEY WILL SEE THE OTHER PARENT, IT HELPS REDUCE THE IMPACT AND THEY'LL ADJUST FASTER.

We work with our clients on an interim plan during the break-up to provide routine and stability, at the same time working on a full Private Parenting Plan for the year ahead. Covering holidays, medical care, birthdays etc, we find once a plan is in place, a routine is quickly established and many of the petty grievances drop away. Our Separation service will step you through your financial separation, divorce, and parenting plan. Our clients live throughout Australia and Australians residing overseas. We offer a set fee price, there are no hidden costs, no extras, no ticking hourly rate on the clock, every appointment, email, text and negotiation are included. We can work with you on your own, however if you both work with us the process time and cost can be minimised. ■

"How do we work out shared care?"

WHAT OUR CLIENTS ARE SAYING...

Amanda, Once we had the plan in place, communicating was easier.

Chris, Our kids felt settled and happy in their new routine.

Kylie, I'm so grateful for the support and guidance you gave us.

Mark, My ex was so awkward I never thought I'd see the kids, the plan was brilliant.

Jessica, It made handover easy, we didn't argue anymore.

Jason, You made this an easy process.

"How do I tell the kids?"

 **ACT 4 TOMORROW** Separation Specialists

 1300 Act4Tom (1300 228486)

 act4tomorrow.com.au

 info@act4tomorrow.com.au



No one likes to wait

No wait times for new patients. **No Brisbane traffic.**

Dr Michael Bryant and Dr Stephen Byrne offer spinal and cranial neurosurgery excellence for your patients. Their collaborative approach at a variety of Sunshine Coast locations ensures the best patient care possible with no need to travel to Brisbane.

Call us on 07 5493 5100

Operating locations



Clinic locations

Pulse Oceanside Medical — Birtinya

Noosa Hospital — Noosaville



scbrainandspine.com.au

Professional care right here on the coast!

EDEN PRIVATE HOSPITAL – SEPTEMBER 2019

INTENT on speaking well

Would you want to slowly lose your voice because your brain tricks your ears into believing that a whisper is your normal level of speech? This is just one of the effects of Parkinson's Disease. As many as 90% of people with Parkinson's are at high risk of losing their ability to speak and swallow, with aspiration pneumonia caused by swallowing difficulties a common cause of death in people with Parkinson's.



Fortunately for people with Parkinson's on the Sunshine Coast, Eden Private Hospital in Cooroy is one of the first facilities in Queensland to offer a pioneering therapy program which aims to halt or reverse the effects of Parkinson's and related disorders on speech, voice and swallowing.

SPEAK OUT!® is the product of the US-based Parkinson's Voice Project. It is a highly effective speech therapy program based on the teachings of Dr Daniel Boone, a world-renowned speech-language pathologist and voice expert who recognized in the late 1950s that individuals with Parkinson's could improve their communication if they spoke with "intent."

Eden's speech pathologists Sarah Lock and Melanie McHugh are two of the few therapists in Queensland certified in SPEAK OUT!®, which combines individual therapy (SPEAK OUT!®) with ongoing group therapy (The LOUD Crowd®) to convert speech from an automatic function to an intentional act. In a 12-session course, participants are trained to *speak with INTENT*, to speak as though speaking to a crowd. The exercises, which must be performed daily for life, rebuild volume, breath control and speech intelligibility.

After a lifetime of chairing meetings, panels and debates, along with public speaking and facilitation, local identity Michael Donovan, a long-term sufferer of MSA (Multiple System Atrophy, which emulates Parkinson's Disease), has completed SPEAK OUT!®. He is one of the first to do so on the Sunshine Coast.

"My wife and friends noticed I was speaking more softly and not engaging in conversation as robustly as usual," said Donovan. "SPEAK OUT!® has given me the techniques to practise rebuilding my vocal capacity. I do many of the exercises while driving as well as at home." "Since SPEAK OUT!® my wife and friends can hear me, and I have renewed confidence in my voice and speech" said Donovan.

The vocal exercises, done twice daily, are simple. They involve intentional use of voice in a range of graded exercises including pitch glides, reading aloud and challenging cognitive exercises.

The SPEAK OUT!® program is covered by medical funds as a day patient at Eden Private Hospital.

Pain Clinic



DR GUS FERGUSON
DR SALLY JOHNSTONE

The Pain Clinic with XRI at Kawana, provides the referrers and patients of the Sunshine Coast with over 25 years of experience.

The team led by **Dr Gus Ferguson** and **Dr Sally Johnstone** provide a patient centric comprehensive approach to image guided Pain Management.

Procedures offered

RADIOFREQUENCY NEUROTOMY for

- ✓ Spinal facet-related Pain Relief
- ✓ Cervicogenic Headaches
- ✓ Occipital Neuralgia
- ✓ Sacroiliac Joints
- ✓ Amputee "stump" neuromas
- ✓ Morton's Neuroma

- ✓ **DORSAL ROOT GANGLION ABLATION**
- ✓ **MEDIAL BRANCH BLOCKS**
- ✓ **EPIDURAL BLOCKS**

Also available

- ✓ Nerve Root Sleeve Blocks
- ✓ Intercostal Nerve Blocks
- ✓ Cluneal nerve blocks/ablation
- ✓ Facet Joint Injections
- ✓ Costo-vertebral Blocks
- ✓ Soft Tissue Biopsy



Pain Clinic location



3/7 Nicklin Way,
Minyama QLD 4575

PLEASE CALL TO DISCUSS YOUR PATIENT'S CARE.

Ph: (07) 5458 4444 Fax: (07) 5458 4499

Send referrals to: painclinic@xrayimaging.com.au

Is Your SMSF compliant? Do you need your Investment Strategy updated?



The ATO has recently written to over 17,000 Trustees of SMSFs warning them that they may risk being fined \$4,200 if their fund's Investment Strategy does not meet the requirements under the law.

The funds were selected for scrutiny because according to the ATO's records, they may hold 90% or more of their funds in one asset or a single asset class and may be at risk of not meeting the diversification requirements of regulation 4.09 *The Superannuation Industry (Supervision) Regulations 1994*.

Panicked Trustees have been contacting their financial advisors and accountants seeking an explanation as to whether or not they are breaking the law.

The ATO has also written to SMSF Auditors reminding them to "expect to see documented evidence" that Trustees considered:

- Diversification of the fund's investment and the risks associated with inadequate diversification, and
- That other relevant factors were such as risk involved in making, holding, and the likely return from the investments having regard to the fund's investments and cash flow requirements.
- The liquidity of the investments having regard to expected cash flows and prospective liabilities.
- Whether Trustees considered holding insurance for one or more members.

The auditor is urged to consider whether any non-compliance with the above factors amounts to a material contravention that should be reported to the ATO.

The approach taken by the ATO is regarded by some to be a little harsh given that many trustees have legitimate reasons for being concentrated in one asset. For example, an elderly trustee in retirement maintaining cash only investments or business owners purchasing their business premises. These people, however, are not whom the ATO is targeting.

The ATO has genuine concerns about the increase in particular types of investments, including:

- Residential property supported by borrowing arrangements
- Short Term Property Rentals
- Cryptocurrency
- Lending to related and other entities
- Investments in related parties and other closely held unlisted entities.

Given also, the overall increase in the number of SMSFs over past years, it is with some understandable benevolence that the ATO is reminding trustees that the sole purpose of their SMSF is to provide members with benefits in retirement or benefits to dependants upon a member's death.

The ATO remains concerned that less diversified SMSFs, including those with borrowings, are exposed to asset concentration risk that can lead to a significant loss in the value of the SMSF and/or inability for the SMSF to meet its cash requirements, including the payment of pensions.

Despite this legitimate concern, many other trustees have devised their SMSF investment strategy having considered diversification, liquidity and insurance. For those trustees the lack of investment diversification is not a problem so long as they have genuinely turned their mind to formulating their Investment Strategy. In fact, the law does not specifically require a well-diversified or highly liquid investment portfolio, only that adequate documentation exists to demonstrate consideration of the above. Ultimately, it is the absence of this documentation that will lead to the issues with the ATO.

If you have a SMSF and would like to have peace of mind that your SMSF meets the ATO rules, please don't hesitate to contact me, I'm happy to help. Poole Group **5437 9900**

Kelly Brady Representative of Poole & Partners Investment Services Pty Ltd - AFSL 280232

Information sourced www.ato.gov.au



Sunshine Coast Orthopaedic Clinic

The Acute Knee Clinic

The first few days can make all the difference in recovery from a sporting injury.

Dr Steve Lawrie at the Sunshine Coast Orthopaedic Clinic provides an Acute Knee Clinic each Monday and Tuesday which is specifically designed for, but not limited to, sports injuries of the knee with a view to rapid assessment, investigation and adoption of a management plan within the first few days of the initial injury.

The Acute Knee Clinic has now been running for twelve years. We have treated many professional and semi-professional athletes as well as the "weekend warriors", including a special interest in paediatric sporting injuries. Dr Lawrie has a close association with many sporting teams on the Sunshine Coast, including the Sunshine Coast Falcons, Melbourne Storm and many other local clubs.

Specific conditions that can benefit from emergent assessment include suspected ligamentous injuries, including cruciate ligaments, medial ligaments, multiple ligament injuries, acute patellar dislocation, locked knees and especially paediatric cruciate and meniscal injuries whether that be by implementing early surgical techniques

or an appropriate non-operative treatment programme.

To access the Acute Knee Clinic, a patient needs to have a current referral to Dr Steven Lawrie and plain x-rays of the knee should also be arranged before the initial consultation.

A plain x-ray is very important in the initial assessment to exclude fractures, loose bodies, and to show the alignment of the knee joint and the patellofemoral joint, which cannot be seen on other investigations, such as an MRI scan.

Splints and orthotics can be organized directly with Leonie Walton on 5473 5858. Leonie attends our clinic on a Thursday afternoon, but she is available throughout the week as needed.

The Acute Knee Clinic is intended to complement Dr Lawrie's other interests, including hip and knee replacement, revision arthroplasty, computer assisted joint replacement, cartilage surgery, as well as hip, knee and ankle arthroscopy.

Dr Lawrie is happy to take phone calls for advice, queries etc as this often helps the referral process.

For appointments contact

Dr Steven Lawrie
Suite 17, Kawana Private Hospital
5 Innovation Parkway, Birtinya QLD 4575
p: 07 5493 3994
f: 07 5493 3897
e: sunshineortho@bigpond.com.au
www.sunshineortho.com.au

Examples of these injuries include:

A medial ligament injury is usually easily treated in a range of motion brace, using an MCL protocol if applied with the 1st week or so. But it can be extremely difficult to correct if there is a delay of a number of weeks.

Paediatric meniscal tears may be repairable early after an injury, but a delay typically means meniscal resection becomes necessary.

Acute patellar dislocation may respond to surgical repair if surgery is offered in the first 2 weeks after the injury.

Traumatic meniscal tears where early repair rather than delayed resection can make a dramatic difference in outcomes

Early ACL surgery in the young active patient/sportsman.

The future of CT has arrived

Noosa Radiology is pleased to announce the arrival of a new state of the art CT Scanner. This investment in patient care is the first of its kind on the Sunshine Coast.

The Siemens® SOMATOM go.Top incorporates the latest in medical imaging technology. Scans can now be completed faster than ever before with reduced radiation doses, improved image quality and new clinical applications.

Dual Energy TwinBeam

TwinBeam Dual Energy enables the acquisition of high and low energy spectra, delivering improved diagnostic quality without an increase in x-ray dose. Applications include Oncology, Gout, Renal Stones and CT Angiography.

CT Coronary Angiography - CTCA

CTCA provides, crisp, clean images of the heart and coronary arteries. This non-invasive imaging allows early detection and assessment of disease which leads to myocardial infarction (heart attack).

Ultra Low Dose Sn Filter

The state of the art Sn filter allows us to perform some CT scans for the same dose as plain x-rays. Extremities, Sinus, Dentascans, Chest, Ribs, Renal Stones and Skeletal Surveys can all be done with ultra low dose Sn filter imaging.

Tablet Control

Hand held control via a tablet allows our technicians to manage procedures from the bedside for patient comfort.

Contact our clinic on **07 5440 9700** or email our Practice Manager sandy@noosaradiology.com.au for more information.



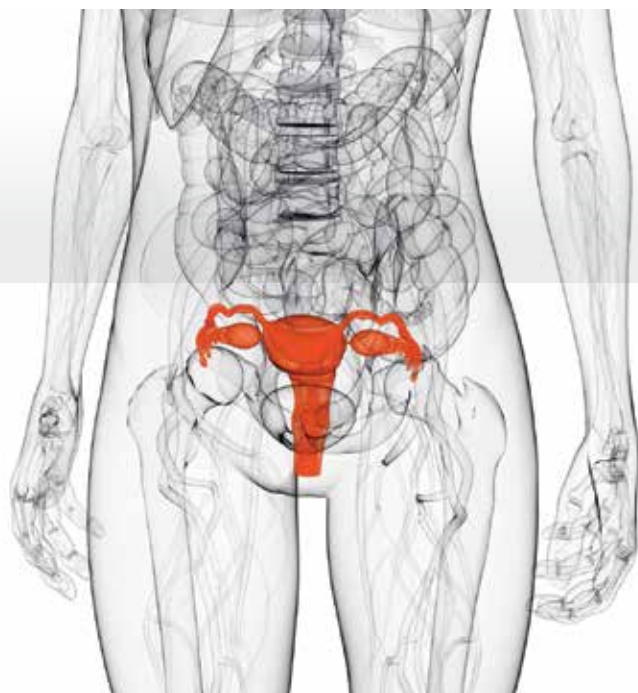
Noosaville Medical & Professional Centre, 90 Goodchap Street, Noosaville

www.noosaradiology.com.au

GP Education

GP gynaecology

*CST, pelvic flaws,
heavy menstrual bleeding*



PROGRAM

6.00pm Registrations, welcome, dinner

6.30pm Presentations and discussions

Cervical Screening Testing in Australia - Where are we now?

Dr Robyn Boston, *Gynaecologist*

Water Works and Mesh debacle,

Dr Christopher Price, *Gynaecologist*

Abnormal uterine bleeding (including heavy menstrual bleeding)

Dr Lider Kukurt, *Gynaecologist*

8.30pm Evaluation and close

LEARNING OUTCOMES

- Implement current cervical screening guidelines
- Assess and manage pelvic floor problems
- Develop a care path for women with abnormal uterine bleeding

WHEN

Wednesday, 13 November, 2019

WHERE

Rumba Beach Resort,
10 Leeding Terrace,
Caloundra 4551

REGISTER BY

Wednesday, 6 November, 2019

Proudly sponsored by



It's easy to register

Online <http://www.sunshinecoastuniversityprivate.com.au/For-Doctors/GP-Education>

Call GP Liaison officer Pam Fotheringham 0427 327 321

Email if you wish to be removed from our mailing list



**Sunshine Coast University
Private Hospital**

Part of Ramsay Health Care

Designing better care

GenesisCare radiation oncology

10 King Street Buderim

GenesisCare, Sunshine Coast Haematology and Oncology Clinic and associated allied health services have united to create a true integrated cancer treatment centre, purpose built to provide the gold-standard in cancer diagnosis, treatment and management.

The same radiation oncologists you know and trust, providing high quality, personalised care.



Dr Debra Furniss
GI, Breast, lung, SABR, SRS, benign diseases, skin and palliative



Dr Olivia Bigault
Urological, gynaecological, breast, skin and palliative



Dr James MacKean
Prostate brachytherapy, urological, GI, SRS, haematology and palliative



Dr Bradley Wong
Prostate, urological, skin, breast, palliative and SRT

Our services include:

- stereotactic radiation therapy, cranial and SABR for lung, spine, bone and liver
- Deep Inspiration Breath Hold (DIBH)
- leading radiation therapy techniques including VMAT and IGRT
- specialised wide-field radiation therapy for extensive skin cancerisation
- treatment for benign conditions including Dupuytren's disease
- daily patient bus service available

Get in touch:

Tel: (07) 5374 8100

Fax: (07) 5374 8110

receptiononcologybuderim@genesiscare.com



Hospital Medical Officers required General Wards, CCU and ICU



Opportunities exist for Hospital Medical Officers (HMO) to join our existing workforce covering:

- general medical and surgical wards
- CCU
- ICU

Sunshine Coast University Private Hospital (SCUPH) opened in November 2013 and is a 171-bed private hospital, offering a comprehensive range of inpatient and day services across a wide range of specialties.

The ICU at SCUPH is a Level 6 Intensive Care.

The unit comprises of an 11 bed ICU and a dedicated CCU.

The unit has 24 hours presence of a Hospital Medical Officer and is supervised by an Intensive Care Specialist who is always contactable.

The HMO rosters operate 24/7 with shifts in ICU 12 hours long and shifts on the general wards 8-12 hours long.

Essential Criteria:

- Current general registration with AHPRA
- Minimum of 3 years' clinical experience in Australia
- For CCU: Required to have greater than 2 years CCU experience
- For ICU: Required to have greater than 12 months ICU and/or anaesthetics experience.

To apply, please contact:

Oliver Steele, CEO

Sunshine Coast University Private Hospital

T: 5390 6101 E: MedicalServices.SC@ramsayhealth.com.au

Please note, only applicants meeting the above essential criteria will be considered. Applications from locum agencies will not be accepted.



ramsaydocs.com.au



[ramsay-health-care](https://www.ramsay-health-care.com)



ramsayhealth.com

LONDON

The most popular historical city of the world, London, has a legacy of its own and has survived many ups and downs as civilization made its way to the present era. The old Victorian buildings and the majestic cathedrals remain the most exciting and interesting places to explore on your holidays.



The Historical Buildings and Royal Palaces

Spice up your unforgettable experience in London by visiting the most important building from history. The Tower of London, St. Paul's Cathedral, Windsor Castle and the Tower of London, besides the Big Ben are the ones to head to. These sites and buildings will surely take you back in time to a different era altogether. The palaces are very much an integral part of London and have their own stories from the past to tell. The most popular of the royal palaces are the Buckingham Palace built by George VI, and the Kensington Palace where Queen Victoria grew up.

Shopping in London

Once you are in London, you cannot go without shopping. There are several well-known shopping centers situated in and around the town. Among them, the most popular is Harrods. This is a must see place even if you plan not to buy anything. Besides Harrods, other famous places to go for shopping are Fortnum and Mason, Selfridges, Liberty, and Harvey Nichols. For those looking to shop in a reasonable range can visit the Camden market. Other places for shopping include Oxford Street, Regent Street and Soho.

Food in London

London is famous for its pies and chips, and this you can try at the Smithfield Market. If you wish to try oriental cuisines then you can head to The City Restaurant. You will find a huge number of fast food joints are found in Islington.

What Have We Planned For You

- *Visit the Kensington Palace and the Italian fountains along with the Princess Diana Memorial Fountain for a memorable experience*
- *Cruise along the Thames River to Westminster Pier while enjoying the beautiful weather and vivacious night life*
- *Explore the must-see attractions like Buckingham Palace, the London Eye, Westminster Abbey, Big Ben, and the Trafalgar Square*
- *Eat out at the Trafalgar Square's popular Sherlock Holmes Pub*
- *Go on a shopping spree at Portobello Market, Harrods, and Piccadilly Circus.*
- *Check out the London's popular museums like Museum of London and Imperial War Museum.*

London remains the dream destination especially if you are looking to experience slices of the city from the glorious past. And, this trip will make your London Holidays one of the best holidays ever!

Sunshine Coast Orthopaedic Group

Specialists in the management of hip and knee osteoarthritis

Our highly skilled, multidisciplinary team includes orthopaedic surgeons Dr Daevyd Rodda and Dr Frank Connon, a sports medicine physician and a musculoskeletal nurse practitioner.

We are proud to offer:

- World class, patient focussed care, delivered with a compassionate approach.
- Operative interventions including:
 - **Patient specific knee replacement using patient matched technology.**
 - **Minimally invasive direct anterior approach hip replacement.**
- Non operative procedures including: comprehensive patient specific care plans, exercise programs and lifestyle management strategies, injectables including steroids, hyaluronic acid derivatives (Synvisc and Durolane) and platelet-rich plasma.
- Monthly seminars aimed at educating osteoarthritis sufferers in non-operative and operative options available to them.
- Small group pre-surgery information sessions to ensure patients are well equipped and prepared prior to their procedure.



Dr Daevyd Rodda, Orthopaedic Surgeon



SUNSHINECOAST
ORTHOPAEDIC GROUP

Contact us today for referrals and more information about our free monthly patient education seminars.

07 5493 8038 | www.scorthogroup.com.au



Nambour Selangor Private Hospital is a modern health care facility providing a comprehensive range of medical and surgical services to the Sunshine Coast community in a caring and supportive environment.

Caring for people in our community for over 70 years

- | | |
|--------------------------------|---|
| • Breast & Endocrine Surgery | • Orthopaedic Surgery |
| • Bariatric Surgery | • Paediatric Surgery |
| • Colorectal Surgery | • Pain Medicine |
| • Ear, Nose and Throat Surgery | • Palliative Care |
| • Gastroenterology | • Rehabilitation – Day & Inpatient Programs |
| • General Medicine | • Renal Medicine |
| • General Surgery | • Respiratory & Sleep Medicine |
| • Geriatric Medicine | • Urology |
| • Haematology & Oncology | • Vascular Surgery |
| • Oral & Maxillofacial Surgery | |

Call 07 5459 7444 for more information or visit nambourselangor.com.au

62 Netherton St, Nambour QLD 5460



Nambour Selangor Private Hospital

Part of Ramsay Health Care



There for you

A chance to make new friends

It's expected that receiving regular treatment in hospital would take its toll on your mood, but the spirit of Robert (Bob) Hanson couldn't be brighter.

Bob is several months into his treatment at the Adem Crosby Centre Clinic in the Sunshine Coast University Hospital (SCUH), for radiation therapy following stomach surgery he had back in December to remove a cancerous tumour.

During this time, the 76-year-old Gympie man has stayed at Wishlist's affordable accommodation facility in Nambour, Reed House.

Bob said receiving a Reed House brochure at the reception desk of Gympie Hospital was nothing short of a dream come true for him.

"I had driven to my first appointment, but after receiving a hefty needle I got really drowsy and knew the side effects wouldn't be safe to drive home with," he said.

"What is great about Reed House is that I can stay somewhere beautiful and peaceful, with friendly volunteers and a driver to take me to all my appointments.

"The driver and I have become quite good friends, sometimes we will stop on the way back and get some dinner together."

Both Bob and his wife Carol have lived on a Gympie property since he retired 12 years ago, it is also home to chickens, geese and two working dogs.

After Carol had previously needed surgery at SCUH for a broken ankle, and with a farmyard of animals to maintain, the Hanson couple decided Bob would stay at Reed House alone while Carol took care of things back home.

"Someone had to hold down the fort while the boss was away," Bob laughed.

Originally, Bob was worried he would be lonely at Wishlist's Nambour hospital house – he quickly learned this was not the case.

"I met an old chap Graham staying at Reed House who had just lost his wife," he said.

"I've got a few miles up on the speed of life, and I could tell the poor guy was a bit down and in need of some company - so I did what I could to take care of him.

"I absolutely love cooking so instead of making food for just me I started cooking for him too, and when he left to be with his niece in Southport I drew him up a map so he wouldn't get lost."

As well as making friends with people, Bob also has a love of animals.

"At 7am sharp everyday two Currawongs come and sit on the Reed House patio, waiting for me to give them some breakkie," he said.

"It really is so wonderful. The people, the solitude, the environment – it's in an element of its own and there's no complaints coming from me."

Reed House is proof the little things do make a difference in the life of someone going through a hard time.

Based in Nambour, Reed House is 20-bed emergency hospital accommodation facility, managed by Hospital Foundation Wishlist and run by a wonderful team of volunteers.

The home is in its tenth year of housing families in need of fast, safe and affordable accommodation.

People requiring treatment at Nambour, Selangor, Caloundra and the Sunshine Coast University Hospital (SCUH) can pay as little as \$60 a night for a room with cooking and laundry facilities, communal living spaces, on-site parking and a playground.

There are also options of self-contained rooms available for visitors with special needs.

Adding to its affordable accommodation offering, Wishlist and Ausmar Homes will soon complete construction of The House The Coast Built. Thanks to the generosity of countless local businesses, the home will provide a haven for families within walking distance to the Sunshine Coast University Hospital.

It will be open to families in time for Christmas.

To find out more or to book a stay at Reed House, email reception@reedhouse.com.au or call (07) 5441 1049 between 8am to 4pm, Monday to Friday.



Your pathology provider on the Sunshine Coast



Dr Irene Krajewska FRCPA FIAC

E: irene_krajewska@snp.com.au

T: (07) 5459 1400

Dr Irene Krajewska graduated from Manchester University in 1978. After five years of FRCS surgical training in the UK and South Australia, she undertook training in anatomical pathology at the IMVS in Adelaide, where she developed an interest in GIT, gynaepathology and cytology under Prof. Svante Orell. She was awarded the RCPA Fellowship in 1990 and the Fellowship of the International Academy of Cytology in 1991. Irene has been an examiner for the RCPA and Australian Society of Cytology. She joined Sullivan Nicolaides Pathology in 2003 and is based on the Sunshine Coast. Her interests are FNA cytology, breast pathology, dermatopathology, gastrointestinal pathology and gynaepathology.



Dr Jerome Lai FRCPA

E: jerome_lai@snp.com.au

T: (07) 5459 1400

Dr Lai graduated from the University of Queensland in 1984 and undertook further training in pathology at the Princess Alexandra Hospital and the Mater Misericordiae Hospital in Brisbane. He was awarded the RCPA Fellowship in 1991. Before joining Sullivan Nicolaides Pathology, Dr Lai was Pathology Queensland's Director of Pathology for the Sunshine Coast region.



Dr Karien Treurnicht FRCPA FIAC

E: karien_treurnicht@snp.com.au

T: (07) 5459 1400

Dr Karien Treurnicht graduated cum laude from the School of Medicine at the University of Pretoria, South Africa, in 1995. Karien moved to the UK in 1999 and undertook specialist training in histopathology at a number of London hospitals. She gained a Fellowship from the Royal College of Pathologists (FRCPath UK) in 2003 and in the following year went on to a Urological Pathology Fellowship at Bostwick Laboratories in Richmond, Virginia, USA. In 2005, Karien became Medical Director of Bostwick Laboratories, London, a full-service independent medical laboratory specialising in the interpretation of prostate and urological biopsies. She joined Sullivan Nicolaides Pathology in 2015 and is based at the Buderim laboratory. Karien is widely published and has presented at conferences internationally.



NDIS REGISTERED ALLIED HEALTH PROVIDER

We have a wide range of health services to assist in your patients' NDIS rehabilitation including:



- Physiotherapy Neuro, Stroke, Parkinson's, MS.
- Exercise Physiology
- Occupational Therapy
- Podiatry
- Dietetics
- Hydrotherapy/Aquatic Physiotherapy

We provide patients with: pain management treatment, home exercise programs for rehabilitation, advice on the management of their condition, recommendations for mobility & equipment aids and advice on transfers within the home & out in the community.



SPORTS & SPINAL: 15 LOCATIONS

Referrals via Medial Objects, Fax or Referral pad



REGIONAL PRIVATE PRACTICE SEMINAR SERIES TWO 2019

PERFORMANCE MANAGEMENT

CONSISTENT AND EQUITABLE MANAGEMENT PRACTICES

Performance management is an all day, every day management activity. Building a good workplace culture and modelling positive behaviours go a long way to keeping your team heading in the right direction. However sometimes, for a myriad of reasons, you may encounter staff who struggle or refuse to meet your reasonable work requirements. It can be frustrating but a strategic plan will help you to navigate the performance management experience. A good well executed plan is invaluable if you are faced with an unfair dismissal claim.

We will look at the things that you can do every day to:

- ▶ keep your team focussed and motivated; and
- ▶ deal with challenging staff so they meet your requirements or understand why you need to move them on.

Register now to secure your place. Practice support staff in the permanent employ of AMA Queensland Members and Award Subscription Members are eligible for AMA Queensland Member rates.

REGISTER NOW ONLINE AT WWW.AMAQ.COM.AU

Award Subscription Members registering online must retrieve a discount code to receive the nominated discounted rate. Contact the Events Team to receive your discount code.



COMING SOON

Recordings of the past two Regional Private Practice Series
Performance Management is part three of a nine part employment

TOURING QUEENSLAND
29 OCTOBER - 5 DECEMBER
LOCATIONS & DATES OVERLEAF

COST

Award Subscription Members:

First attendee: \$110
Additional attendees: \$98

AMA Queensland Members:

(Includes practice staff in the employ of members)

First attendee: \$120
Additional attendees: \$107

Australian Association of Practice Management (AAPM) Members:

First attendee: \$120
Additional attendees: \$107

Non-members:

First attendee: \$150
Additional attendees: \$132

SEMINAR INCLUSIONS

- ▶ Tea and coffee on arrival
- ▶ Morning tea
- ▶ Course notes
- ▶ Certificate of attendance

TRAINER



Michelle Cowan,
Senior Industrial Officer,
AMA Queensland

CONTACT US

For any enquiries, please contact the Events Team on (07) 3872 2222 or email registrations@amaq.com.au.

REGIONAL PRIVATE PRACTICE SEMINAR SERIES TWO 2019

REGISTRATION FORM



FIRST ATTENDEE please tick your location below

Name: Dr / Mr / Ms / Mrs / Miss (Please circle) _____

☐ Award Subscription Member ☐ AMA Member ☐ AAPM Member ☐ Non-member

AMA Queensland/AAPM Member number: _____ In the employ of Dr: _____

Practice name: _____ Position title: _____

Office phone: _____ Mobile: _____ Email address: _____

Postal address: _____

Dietary requirements: _____

ADDITIONAL ATTENDEES

Name: Dr / Mr / Ms / Mrs / Miss (Please circle) _____

☐ Award Subscription Member ☐ AMA Member
☐ AAPM Member ☐ Non-member

Position title: _____

Email address: _____

Dietary requirements: _____

Name: Dr / Mr / Ms / Mrs / Miss (Please circle) _____

☐ Award Subscription Member ☐ AMA Member
☐ AAPM Member ☐ Non-member

Position title: _____

Email address: _____

Dietary requirements: _____

PAYMENT

Credit card: ☐ Visa ☐ Mastercard ☐ AMEX

Amount: \$ _____

Card number: _____

Expiry date: ____ / ____ CCV: _____

Cardholder's name: _____

Signature: _____

Direct deposit: Contact the Events Team on (07) 3872 2222

Submit registration form:

Email: registrations@amaq.com.au

Fax: (07) 3856 4727

Post: AMA Queensland, PO Box 123,
Red Hill, QLD 4059

Privacy Information:
AMA Queensland's primary purpose of collecting personal information on this form is to process your purchase and to send relevant information to this service. In providing your details you consent to your personal details being used in the

DATES AND LOCATIONS:

- ☐ **Brisbane North**
Tuesday 29 October
9am – 12noon
Kedron-Wavell Services Club, 21 Kittyhawk Drive, Chermside
- ☐ **Mackay**
Friday 1 November
10am – 1pm
North Queensland PHN, Suite 3, Level 1 Post Office Square Building, 67-69 Sydney Street, Mackay
- ☐ **Toowoomba**
Tuesday 5 November
10am – 1pm
Toowoomba City Library, Civic Square, 155 Herries St, Toowoomba City
- ☐ **Bundaberg**
Wednesday 6 November
10am – 1pm
Central Queensland PHN 205 Bourbong Street, Bundaberg
- ☐ **Brisbane West**
Friday 8 November
9am – 12noon
Indooroopilly Golf Club Meiers Road, Indooroopilly
- ☐ **Hervey Bay**
Monday 11 November
10am – 1pm
Hervey Bay RSL, 11 Torquay Road, Pialba
- ☐ **Brisbane South**
Friday 15 November
9am – 12noon
Pacific Golf Club,
- ☐ **Gold Coast**
Tuesday 19 November
9am – 12noon
Gold Coast PHN, 1/14 Edgewater Court, Robina
- ☐ **Cairns**
Friday 22 November
10am – 1pm
Cairns City Library, 151 Abbott St, Cairns City
- ☐ **Sunshine Coast**
Tuesday 26 November
9am – 12noon
Central Queensland PHN Level 1, Mayfield House, 29 The Esplanade, Maroochydore
- ☐ **Gladstone**
Thursday 28 November
12noon – 3pm
Gladstone City Library, 39 Goondoon St, Gladstone Central
- ☐ **Rockhampton**
Friday 29 November
10am – 1pm
Central Queensland PHN Level 1, 44a William Street, Rockhampton
- ☐ **Bayside**
Tuesday 3 December
9am – 12noon
Wynnum Golf Club, 64 Stradbroke Avenue, Wynnum
- ☐ **Townsville**
Thursday 5 December
10am – 1pm
Rydges Southbank, 23 Palmer Street,

Take a moment



When Nelson Mandela was studying law at the University, a white professor, whose last name was Peters, disliked him intensely.

One day, Mr. Peters was having lunch at the dining room when Mandela came along with his tray & sat next to the professor.

The professor said, "Mr Mandela, you do not understand, a pig & a bird do not sit together to eat"

Mandela looked at him as a parent would a rude child & calmly replied, "You do not worry professor. I'll fly away," & he went & sat at another table.

Mr. Peters, reddened with rage, decided to take revenge.

The next day in class he posed the following question:

"Mr. Mandela, if you were walking down the street & found a package, & within was a bag of wisdom & another bag with money, which one would you take ?"

Without hesitating, Mandela responded, "The one with the money, of course."

Mr. Peters, smiling sarcastically said,

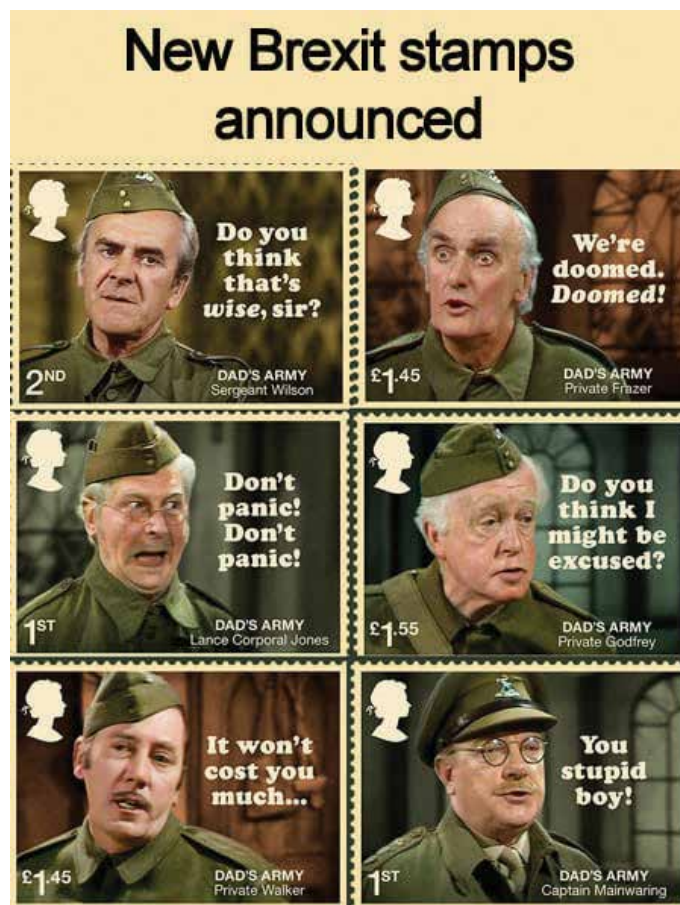
"I, in your place, would have taken the wisdom."

Nelson Mandela shrugged & responded, "Each one takes what he doesn't have."

Mr. Peters, by this time was about to throw a fit, seething with fury. So great was his anger that he wrote on Nelson Mandela's exam sheet the word "IDIOT" & gave it to the future struggle icon.

Mandela took the exam sheet & sat down at his desk trying very hard to remain calm while he contemplated his next move.

A few minutes later, Nelson Mandela got up, walked up to the professor & told him in a dignified polite tone, "Mr. Peters, you signed your name on the sheet, but you forgot to give me my grade."



**Sullivan
Nicolaides**
PATHOLOGY
Quality is in our DNA

Your pathology provider on the Sunshine Coast

Results (24 hours)

P: 1300 778 555

Added tests

P: (07) 3377 8528

Sonic Dx / IT Support

P: 1800 100 769

Doctor Stores Request

F: (07) 5459 1440

Faxed Pathology Request Forms

F: (07) 5459 1440

www.snp.com.au

Local Laboratories

Birtinya P: (07) 5459 1400

Kawana P: (07) 5459 1433

SUNSHINE COAST LOCAL MEDICAL ASSOCIATION Inc. ABN: 56 932 130 084

MEMBERSHIP APPLICATION

Enquiries: Jo Bourke Ph: 5479 3979 Mb: 0407 037 112 Email: jobo@squirrel.com.au

NAME	Surname:		First Name:	
EMAIL: _____				
<i>THE SCLMA PREFERS TO CONTACT MEMBERS VIA EMAIL WHEREVER POSSIBLE.</i>				
PRACTICE ADDRESS: For members who wish to receive hard copies (instead of by email) of the monthly invitation & newsletter by Sullivan Nicolaides Pathology Couriers to avoid postage costs.				
	Practice/Building			
	Street:			
	Suburb:		Postcode:	
	Phone:		Mobile:	
PRACTITIONER DETAILS:				
	Qualifications:			
	Date of Birth:		Year of Graduation:	
	Hospital employed / Private Practice (cross out one)			
	General Practice / Specialist (cross out one)			
	Area of Speciality:			
PLEASE NOTE: <i>Retired doctors who wish to join the Association are required to attach a letter of good standing from their respective College.</i>				
PROPOSERS: (to comply with the Queensland Associations Incorporation Act, two financial members of the Association are required to nominate each applicant for <i>new</i> membership. Members <i>renewing</i> their membership do not need proposers).				
1. NAME:		Signature:		
2. NAME:		Signature:		
ANNUAL SUBSCRIPTION (GST included):		(Please tick)		PLEASE COMPLETE:
Full-time ordinary members - GP and Specialist		\$ 110		Your Monthly Invitation?
Doctor spouse of full-time ordinary member		\$ 55		By Email?
Absentee or non-resident doctors		\$ 55		By Courier?
Part-time ordinary members (less than 10 hours per week)		\$ 55		By Post?
Non-practising ordinary members, under 60 years old		\$ 55		Your Monthly Newsletter?
Residents & Doctors in Training		Free		By Email?
Non-practising ordinary members, over 60 years old		Free		By Courier?
Patron and honorary members		Free		By Post?
Payment can be made by cheque payable to SCLMA or by direct debit to:				
SCLMA Westpac Account. BSB: 034-243 ACCOUNT NUMBER: 11-9298				
Please return this form either by email (scanned) or Fax or Post with details of your E.F.T. to:				
Email: jobo@squirrel.com.au Post: SCLMA PO BOX 549 COTTON TREE 4558 Fax: 5479 3995				
Please note: <i>Membership applications will be considered at the next Management Committee meeting.</i>				

SUNSHINE COAST LOCAL MEDICAL ASSOCIATION Inc.
MANAGEMENT COMMITTEE MEETING
THURSDAY 25 JULY 2019
Maroochydore Surf Club Board Room
MINUTES
Accepted at Committee Meeting 29 AUGUST 2019

Attendance: Drs Roger Faint, Wayne Herdy, Mark de Wet, Peter Ruscoe, Mason Stevenson, Scott Masters, Grant Eddie, Alicia Lorenz, Jonathan Last, John Evans, Jon Harper, Tau Boga, Jack Wilkinson, Shrey Singh (delayed arrival). Observer Jo Bourke (Secretariat)

Apologies: Drs Kirsten Hoyle, Fabio Brecciaroli.
 Dr Andrew Hallahan, Acting Executive Director, Medical Services, SCHHS attended the latter part of the meeting.

Minutes of last meeting: 27 June 2019 (To be accepted).
Moved: Dr Mason Stevenson. Seconded: Dr Scott Masters. Accepted.

Business arising from Minutes: Nil

President's Report: Dr Roger Faint

- Roger welcomed Dr Andrew Hallahan, Acting Executive Director, Medical Services, SCHHS. Andrew is representing Adj. Prof Naomi Dwyer, CE, SCHHS who is unable to attend tonight. Tonight's meeting will be the second health report after a very successful meeting in 2018. As well as Andrew, our presenters will include Dr Jon Harper, PHN Clinical Lead, Sunshine Coast Health Pathways and SCHHS GPLOs – Dr Marlene Pearce and Dr Edwin Kruys. I wish to thank Patti Hudson, CEO PHN, for her financial support for tonight's meeting. It is very much appreciated.
- The AGM is next month and Nomination forms are available tonight. I will be nominating again as President unless anyone else wishes to nominate. Please complete your nominations forms tonight.
- Only a few more days until the Gala Cocktail party at Peppers, Noosa. Our new relationship with the very organised 'Wishlist' is progressing very well and is sure to make the night a successful fundraising event towards our local Sunshine Coast Community.
- With Wishlist's assistance, we attracted significant sponsorship including BMW and Healius. Healius is a large well organised medical company (previously called Primary Health Care) with a significant interest in General Practice including training of doctors.
- Other Sponsors on the night include donations from master opal cutter, Scott Coggan, from 'Opals Down Under', Cheryl Ryan from '123 Travel' and Alistair Cook from 'Buderim Marketplace Pharmacy'. I wish to thank all the doctors who have donated high quality wine towards 'The Doctors' Dozen'.

Vice President's Report : Dr Wayne Herdy (including AMAQ Councillor's Report)

- Wayne reported 'Lockdowns' in Aged Care Homes that he visits. There have been four deaths in his practice. Concern re the Flu vaccination not effective against this particular virus.

Secretary's Report: Dr Mark de Wet

Correspondence In:

- Dr Peta Higgs – re Internal Referrals
- Dr Bryan Palmer – re Medicare Changes
- Lisa Wilson – WishList options for funds.

Correspondence Out: Nil

Business arising from Correspondence:

- Internal Referrals – comments included: has been like this for a while to ensure GPs are not sidelined; Medicare can be accessed more efficiently this way; there is pressure for Indefinite Referrals in the public system.
- Medicare Changes to bulk billing incentive from 1 January 2020. Discussion and Roger to investigate
- Wishlist options – it was agreed unanimously that any profit be directed to Resources for the Child Protection Unit – in particular for children entering Out-Of-Home Care and from vulnerable families.

Treasurer's Report : Dr Peter Ruscoe.

(a) Accounts to be paid:

- Office National – Account June 2019
- Telstra – (part account July – Aug 2019)
- Snap Printing – Newsletter June 2019.
- Snap Printing – Gala function flyers
- Carol Hawkins – Assist Sec (March – June 2019)
- Chris Bourke – Website Uploads
- Jo Bourke – Adobe Creative Cloud Sub June 2019
- Jo Bourke – Reimbursements – sub committee meetings & function.

Moved Dr Peter Ruscoe 'that the accounts as presented be approved for payment'. Seconded: Dr John Evans. Carried.

(b) Membership Report:

- Dr Jed Madden (Intern, SCUH)
 - Dr Brooke Rasmussen (Intern, SCUH)
 - Dr Rachel Hawker (Anaesthesia)
 - Dr Richard Hudson (Orthopaedics / Medico-Legal)
 - Dr John Webster (Oral & Maxillofacial Surgery)
 - Dr Jeremy So (General Practice)
- Moved Dr Peter Ruscoe 'that the membership applications be accepted'. Seconded Dr Roger Faint. Accepted.*

Meetings Convenor Report: Dr Scott Masters

All meetings till end of 2019 booked and in progress.

Hospital Liaison Report: Dr Shrey Singh – nil.

**SUNSHINE COAST LOCAL MEDICAL ASSOCIATION Inc.
MANAGEMENT COMMITTEE MEETING
THURSDAY 25 JULY 2019
MINUTES**

Accepted at Committee Meeting 29 AUGUST 2019

PHN Report: Dr Jon Harper

- There has been huge success in recruiting GP Practices (all but 6 locally and in Gympie for Smart Referral System).
- New QI (Quality Improvement) program for PHN
- The 'Viewer' going well but can't print out results as GP. GP access is through a different Portal

General Business:

- Dr Andrew Hallahan joined the meeting and introduced himself, covering the topics to be presented at tonight's meeting.

Meeting Close 7.00pm

Next meeting Thursday 29 August 2019

- Annual General Meeting
- Dr Greg Finch, Orthopaedic and Spine Surgeon.

***Welcome to our new Members
(accepted 19 September 2019)***

- *Dr Antony Winkel (Neurologist)*
- *Dr Regina Greenwood (General Practice)*
- *Dr Krys Cichocki (General Practice)*

Are you a new member - have you joined in the last six months? You are invited to introduce yourself in the newsletter. Email a few paragraphs and a photo and tell us why you have sought membership!

A Membership application form is published in every newsletter. Also available on our website:

www.sclma.com.au

Would you like to be included on our website Directory? A form is available on our website. If you are already on our Members Directory, please check if your details are correct (public information only please). Enquiries: Jo 0407 037 112.

REDCLIFFE LOCAL MEDICAL ASSOCIATION NEWSLETTER

Redcliffe LMA produces a similar newsletter
For full details re advertising go to their website:
www.rdma.org.au
Email: RDMAnews@gmail.com

ADVERTISING GUIDELINES:

To comply with Section 133 of the National Law and guidelines, advertising of services must not:

Paragraph (a) "Create or be likely to create unwarranted and unrealistic expectations about the effectiveness of the health services advertised"

Paragraph (f) "Claim that the services provided by a particular regulated health profession are better, as safe as or safer than others"

Paragraph (o) "Contain any claim, statement or implication that a practitioner provides superior services to those provided by other registered health practitioners"

PLEASE NOTE THE FOLLOWING:

The anti discrimination commission of Queensland has the following statement on job advertising:

Discriminatory advertising is against the law. Job advertisements need to give the impression that all suitable applicants are welcome to apply. References to sex, relationship status, age, race, religion etc should be avoided, as should the use of words that may indicate a preference for particular groups or may discourage others from applying, eg foreman, tradesman, glamorous, well-built, mature, youthful, office girl etc. Publishers can be fined and be the subject of a complaint to the Commission for publishing discriminatory advertisements that show an intention to contravene the Anti-Discrimination Act 1991. Discriminatory advertisements will therefore often be refused or modified by publishers in order to avoid legal liability.

INVITATION



**BUDERIM
FOUNDATION**
Our Foundation... Our Future

The Buderim Foundation invites you to a special general interest seminar for medical practitioners and their partners.

Enjoy fine wine and canapes as we network prior to an engaging seminar on

ADVANCES IN MELANOMA MANAGEMENT

Thursday 17 October 2019

Montserrat and Genesis Care Building, 10 King Street Buderim

Time: 6pm for 7pm start, concluding at 9pm

RSVP by Monday 14th to Sarah Bird at sarahbird08@gmail.com

Early replies are encouraged because of the attractive program

Program



A/Prof Helmut Schaidler



Prof Mark Smithers



Dr Hong Shue

- 7pm** Welcome by Adjunct Professor Russell Stitz AM RFD KSJ: Chairman, Buderim Foundation
- 7.05pm** Introduction by the Moderator Dr Justin D'Arcy, well known Sunshine Coast surgeon with considerable experience in melanoma management.
- 7.10pm** "The Vectra Technology". Associate Professor Helmut Schaidler: UQ and Sunshine Coast academic dermatologist.
- 7.20pm** "Insights from the Queensland Melanoma Project". Professor Mark Smithers AM: Mayne Professor of Surgery at UQ and one of Australia's most prominent surgical oncologists with a longstanding interest in melanoma management and research.
- 7.40pm** "Recent Advances in Medical Management". Dr Hong Shue. Sunshine Coast medical oncologist specialising in melanoma management.
- 7.50pm** Questions and audience interaction.

We hope you can join us for this special, free peer-group event.

This event is proudly sponsored by:



Buderim Foundation is proudly sponsored by:



CLASSIFIEDS

DOCTOR REQUIRED FOR CARDIAC STRESS-TESTING FACILITY.

- Regular part-time work.
- All training provided.
- Attractive remuneration.
- Facilities on Sunshine Coast and Gympie.

For further information. Please contact Dr Andrew Paszkowski at Lakeview Imaging. **Ph: 54931649.**
June 2019

FEMALE VR GP WANTED

- Busy Clinic is seeking a female VR GP to work with a supportive and relaxed team of GPs and nurses, at a Not for Profit Centre offering women's health services in sunny Mooloolaba in the heart of the Sunshine Coast.
- Hourly rate of \$120.00 plus superannuation. Work at your own pace, take the time to give thorough care to appreciative women. Fully computerised using Best Practice software. Work as many or as few hours as you like. Choose your own hours, no weekend work, no after hours. Opportunity to be involved in decision making and goal setting for the Clinic if interested.

Check out website at northcoastwomenshealth.com.au
Please contact Wendy Stephenson on 0754448077 or 0416 938 040 or womenshealthcare@bigpond.com
June 2019

SPECIALIST CONSULTING SUITES IN NOOSA HEADS

Stylish and modern medical consulting suites available for hire on a sessional basis in Noosa Heads. The suites are centrally located in the heart of the Noosa Heads shopping precinct with free on-site parking.

- Ground floor, Large reception area,
- Comfortable waiting area
- Kitchenette, Wi-Fi available, Fully air-conditioned
- All suites are professionally sound-proofed
- There are dedicated medical consulting rooms fully equipped with examination beds, internet connection and hand washing facilities
- There is a consulting suite equipped with a desk and round table as well as internet connection, best suited to Psychiatrists
- A board room is available for meetings
- Disabled access, On-site parking
- Half day session 'Meet and Greet' service \$185 + GST
- 8.30am-12.30pm or 1.00pm-5.00pm
- Full day session 'Meet and Greet' service \$370 + GST
- 8.30am-5.00pm
- If needed, additional reception services can be negotiated.

Please call Lise (Practice Manager) to enquire
Phone 07-5447 2144
June 2019

CHANGE OF ADDRESS FOR ROOMS

Dr Ajay Verma, Specialist Physician has moved his rooms from the Medical Centre at the Buderim Private Hospital to the Nucleus Medical Suites. He now has rooms at the following two address:

Pulse Oceanside Medical Suites
Suite 604, Level 5
11 Eccles Boulevard
Birtinya Qld 4575

and also:

Nucleus Medical Suites
Building A, Suite 4, Level 2
23 Elsa Wilson Drive
Buderim Qld 4556

Contact details for both Rooms:
T: 5437 7390 F: 5302 6660
Email: reception@drajayverma.com.au

June 2019

LANDSBOROUGH & MOOLOOLAH FT/PT VR GP

Required for a busy doctor owned, growing general practice with two sites in the Sunshine Coast Hinterland

- Accredited & GP owned
- Large patient base with continuous new patient registration
- Fully computerised (Best Practice)
- Mixed Billing, No On-Call, DWS available
- Practice Nurse support, including CDM
- 65% of billings, Large patient base
- Pathology, Pharmacy & Physiotherapy
- facilities adjacent
- Great working environment & family friendly

E: lmc@lmcmed.com.au
September 2019

SUNSHINE COAST MAROOCHYDORE PT/VR GP

- Highly respected practice with long established patient base.
- Very busy 3 Doctor general practice looking to reduce their hours.
- Excellent location close to the new proposed CBD of Maroochydore,
- Not far from the new University hospital and Buderim private hospital.
- Central to Specialist facilities.
- Best Practice software.
- Mixed billing 8am-5pm.
- Excellent RN and admin assistance.

P: 5443 6777 E: admin@armpdoc.com.au
July 2019

HAVE A HOLIDAY AND GET PAID!

- Sunshine Coast 2bed, 2bath modern furnished accom near beach at Kawana
- Min 3 months with option to extend
- Practice in Nambour.
- Long established, mixed billing, to replace departing Doctor.
- High gross, High Percentage

Please contact Penny 07 5476 0111
practicemanager@annstfamilymedicine.com.au.
August 2019

SUNSHINE COAST MAROOCHYDORE PT/VR GP

Highly respected practice with long established patient base. Very busy 3 Doctor general practice looking to reduce their hours. Excellent location close to the new proposed CBD of Maroochydore, Not far from the new University hospital and Buderim private hospital. Central to Specialist facilities; Best Practice software. Mixed billing 8am-5pm; Excellent RN and admin assistance.

P: 5443 6777 E: admin@armpdoc.com.au
August 2019

GENERAL PRACTITIONER (VR) - SUNSHINE COAST QUEENSLAND

To find out more, please email your resume to admin@nambourclinic.com.au or ring Rowena for an informal chat 0412 292 666.

Continuing as per request.

CLASSIFIEDS GUIDELINES FOR 2019

- Classifieds are FREE for current SCLMA members
- Classifieds have a placement life of 3 newsletters
- Cost for non-members is \$100 + gst

Queries: Contact Jo 0407 037 112

SCLMA Clinical Meeting - 29 August 2019

Maroochydore Surf Club Private Function Room

Dr Greg Finch FRACS FAOrthA, Consultant Orthopaedic Spinal Surgeon

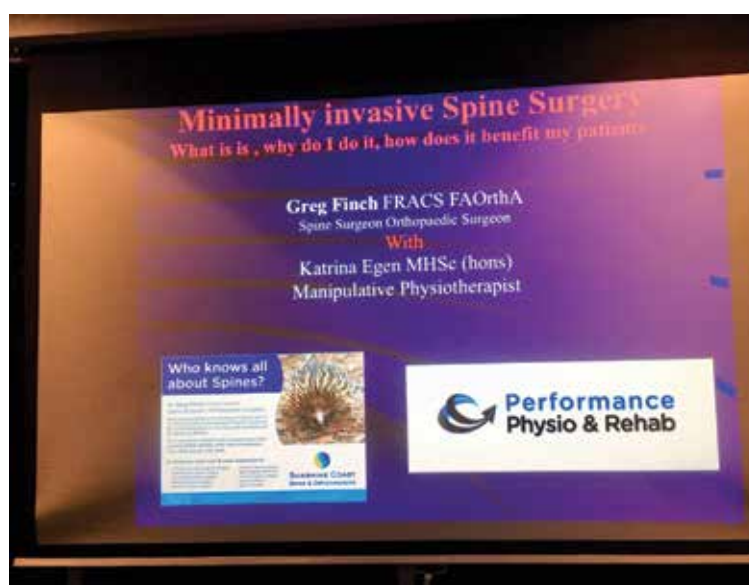
Topic: Minimally Invasive Spine Surgery. What is it? Why do I do it? How does it benefit my patients?

Speaker: Katrina Egan, Physiotherapist MHSc (hons), Performance Physio and Rehab, Mooloolaba.

Topic: Prehab and Rehab of the spine patient.



Presenters: Katrina Egan, Physiotherapist and Dr Greg Finch, Consultant Orthopaedic Spinal Surgeon
Below: Sponsor Matt Thompson from Globus Medical



**Reminder: Check out the SCLMA website: www.sclma.com.au for latest news and past newsletters.
Are you listed on the members's directory? Have your details changed? Let us know!**

